



“Strengthening capacity in the agricultural and land-use sectors for enhanced transparency in implementation and monitoring of Mongolia’s Nationally Determined Contribution (NDC)”,
GCP/MON/016/CBIT Project

(UNFAO/GEF/MET)

MRV system set up



MRV system

JICA

Sector level

Energy

JICA

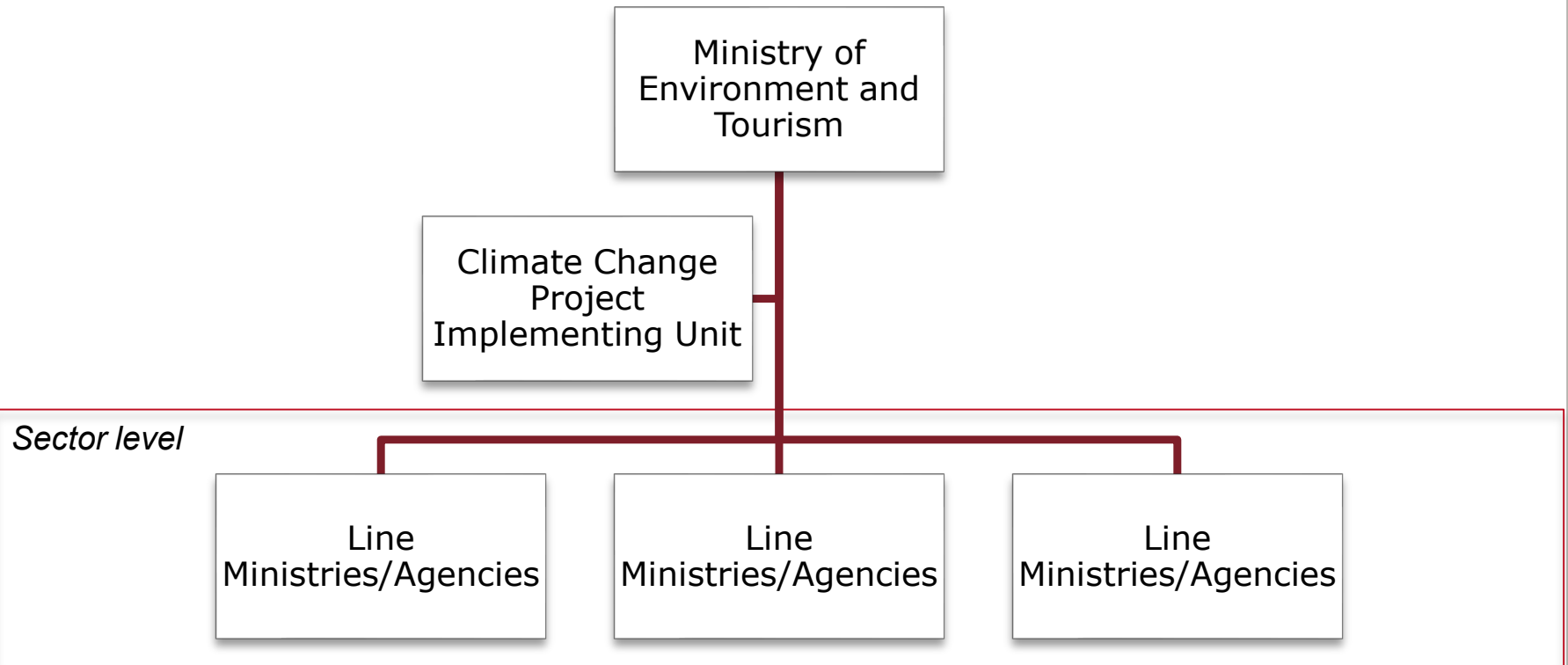
AFOLU

CBIT (FAO)

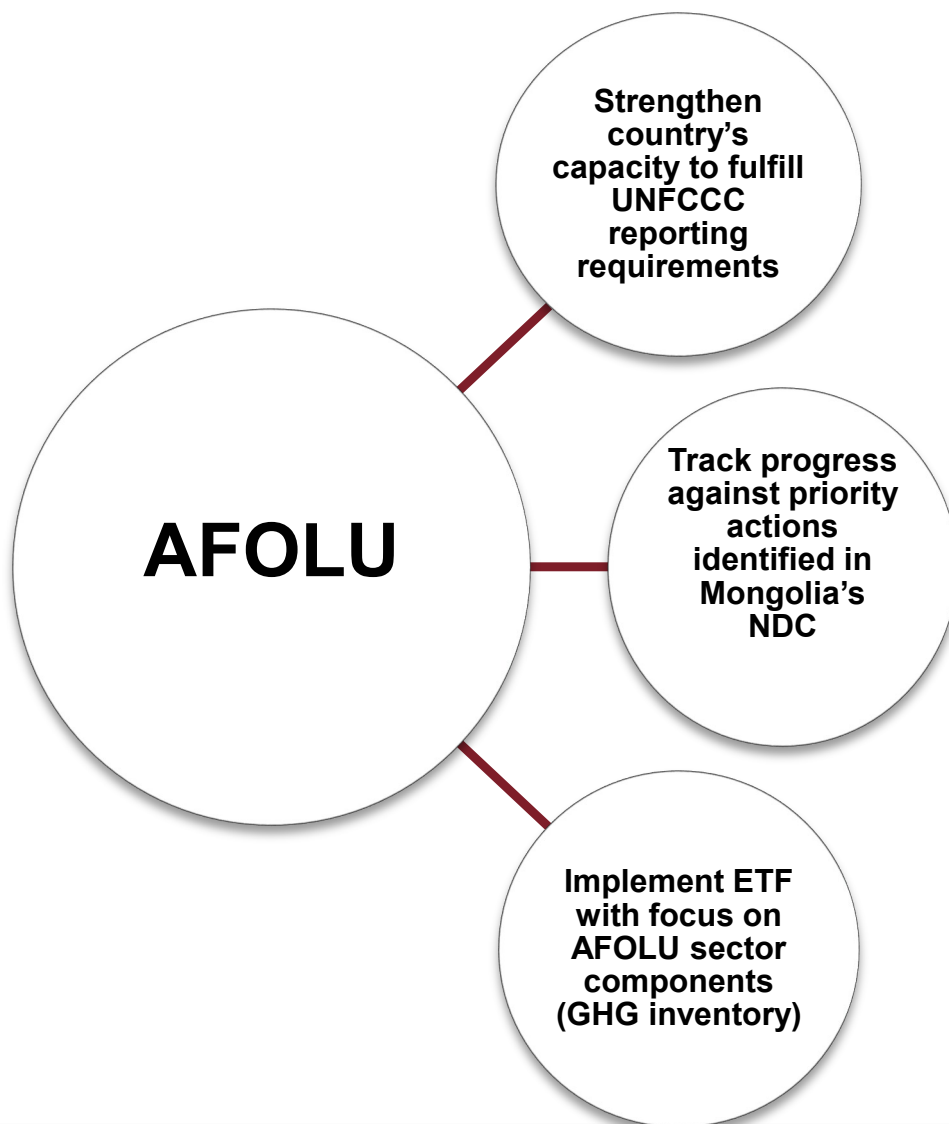
Construction

(NAMA) UNDP

Institutional arrangement



CBIT: Objective



CBIT: Expected Outcomes



- ❖ **Institutional arrangements (IA) for the preparation of ETF reports for AFOLU sector**
 - Coordination mechanism established
 - National ETF monitoring and reporting **roadmap** for AFOLU

- ❖ **Enhance capacity to assess and **report emissions and removals** from the AFOLU sector and to design and **monitor** related *emission reduction* activities strengthened**
 - Documentation and archiving process established (QA, QC)
 - GHG information management system (MIS)
 - Adoption of latest tools and methodologies for estimating GHG emissions from agriculture and land-use sector

- ❖ **Capacity to monitor and report **adaptation** activities in AFOLU strengthened**
 - Development of appropriate indicators
 - Adaptation information management system (MIS) for AFOLU sector upgraded and sustainable
 - Preparation of national report on priority adaptation activities in the AFOLU sector consistent with latest UNFCCC guidance

Thank you