

*Fast tracking preparation of the first BTR of  
Grenada*

---

# Reporting on progress in implementing and achieving the NDCs

18-21 February 2025, Grenada

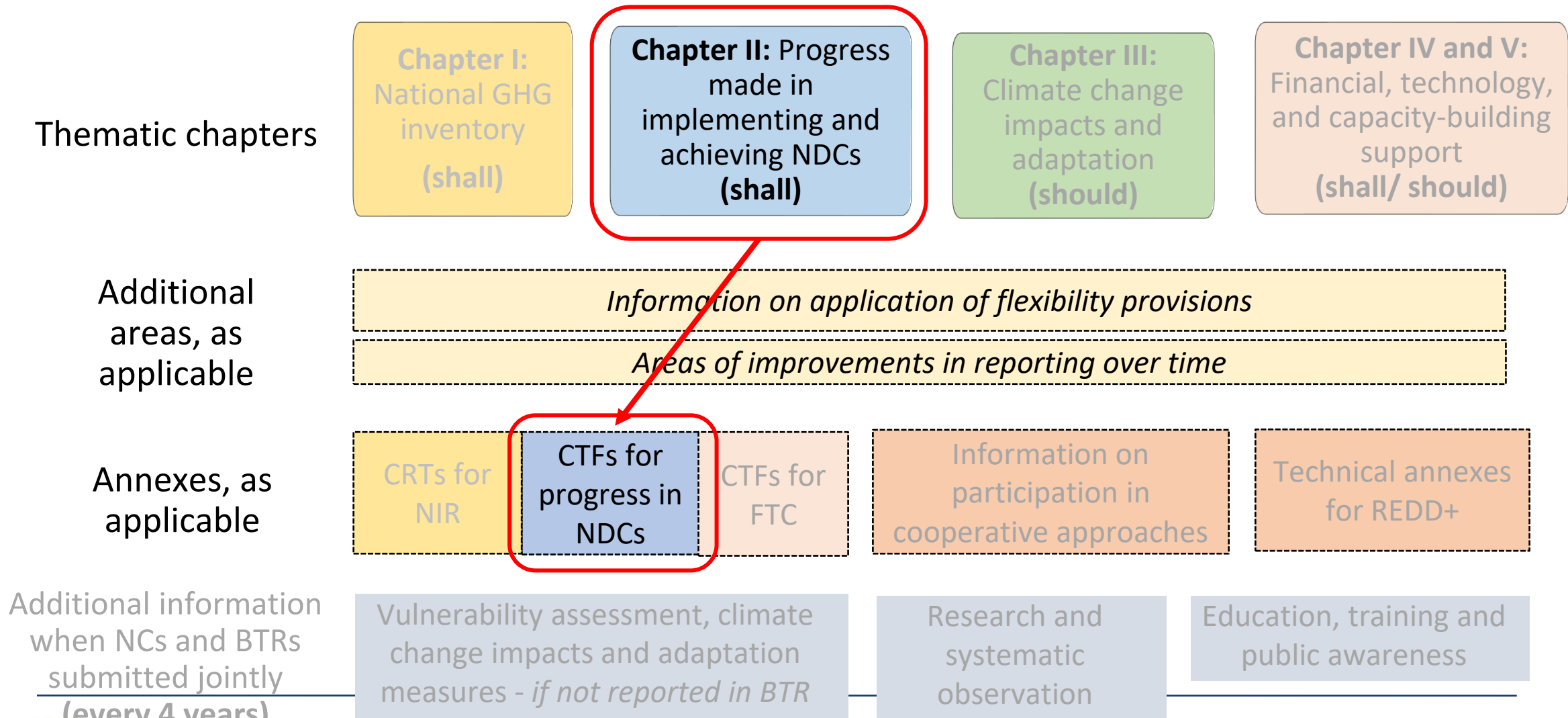


**United Nations**  
Climate Change Secretariat

Tugba Icmeli, Transparency Division



# Progress made in implementing NDCs



For the BTR outline, see [decision 5/CMA.3, Annex IV](#).



## BTR

### Information necessary to track progress made in implementing and achieving the NDC

C. Information necessary to track progress made in implementing and achieving NDCs

A. National circumstances and institutional arrangements

B. Description of a Party's NDC, including updates

D. Mitigation policies and measures, actions and plans, including those with mitigation co-benefits resulting from adaptation actions and economic diversification plans, related to implementing and achieving an NDC

E. Summary of greenhouse gas emissions and removals

F. Projections of greenhouse gas emissions and removals, as applicable

G. Other information

## BUR

- Name and description of the mitigation action
- Methodologies and assumptions
- Objectives of the action and steps taken or envisaged to achieve that action
- Progress of implementation and the underlying steps taken or envisaged, and the results achieved, such as estimated outcomes (metrics depending on type of action) and estimated emission reductions, to the extent possible
- International market mechanisms
- Description of domestic MRV arrangements

## NC

- National circumstances
- Implemented and planned programmes containing measures to mitigate climate change
- Methodological approaches to formulate and prioritize these programmes
- information by key sectors on scenarios, results, measures and institutional arrangements.

## A. National circumstances and institutional arrangements

Should be used to show a comprehensive image of the country's particular context that might impact their progress towards NDCs, including institutional, legal, procedural arrangements for implementation .

## B. Description of a Party's NDC under Article 4 of the Paris Agreement, including updates

Detailed description of the NDC, including all its parameters and any updates since the last report. The purpose is to ensure a clear understanding of the country's climate commitments and any changes therein.

## C. Information necessary to track progress made in implementing and achieving NDCs

The goal of this section is to outline how a country tracks its progress towards meeting its NDCs. It involves detailing the specific indicators used and sharing the most recent data related to these indicators.

## D. Mitigation Policies, Actions, and Plans

Section that presents policies, actions and plans in place to mitigate climate change. The goal is to highlight the measures being taken to reduce GHG emissions and the effectiveness of these measures.

## E. Summary of GHG Emissions and Removals

Provide a succinct summary of a country's GHG emissions and removals. This information is especially important for countries submitting a stand-alone national inventory report

## F. Projections of GHG Emissions and Removals

Projection of future GHG emissions and removals, based on current mitigation policies and measures. This helps to identify the potential future trajectory of a country's GHG emissions. (Flexibility)

## G. Other Information

Any additional information that helps understand the progress in implementing and achieving their NDCs. This could include any unique initiatives, challenges, plans, etc.

- First BTRs was due on **31 December 2024**. **LDCs and SIDS** may submit the information at their **discretion**.
- Some of the **information areas may not be relevant to your NDC** or sometimes there are additional matters to consider. i.e. coverage of GHGs and sectors in your NDC, ITMOs, co-benefits etc. → In those cases, some areas/provisions will not be applicable to report progress of your NDC.
- Information need to match with **NDC**, ensure consistency or explain changes/updates.
- Parties with both **unconditional** and **conditional targets** in their NDC may add a row to the relevant tables to describe their conditional targets.
- Where a **flexibility** is applied, notation **FX** will be used in the tables. Where this applies, **clearly indicate flexibility** applied, the **associated capacity constraints** and **time frame for improvements** in relation to the capacity constraint.

## **FOCUS:**

---

**A. National circumstances and institutional arrangements**

**B. Description of a Party's NDC under Article 4 of the Paris Agreement, including updates**



**United Nations**  
Climate Change Secretariat

# A. National circumstances and institutional arrangements



Each Party **shall** describe its **national circumstances relevant** to progress made in implementing and achieving its NDC, including:

Government structure

Population profile

Geographical profile

Economic profile

Climate profile

Sector details

In addition, each Party **shall** provide information on:

- Clarify the link on **how national circumstances affect GHG emissions and removals** over time
- **Institutional arrangements** in place to track progress of NDCs, including those used for **tracking ITMOs**\*
- **Legal, institutional, administrative and procedural arrangements** for domestic implementation, monitoring, reporting, archiving of information and stakeholder engagement related to the implementation and achievement of the NDC

**In reporting this information, you may reference previously reported information (i.e. NDC, BUR, NC, etc.)**



\* ITMOs: Internationally transferred mitigation outcomes

# Example on institutional arrangements (PANAMA)



**General Law No. 41 on the Environment**

**Executive Decree No. 100 of October 20, 2020**

It establishes that **MiAMBIENTE**, with the support of other institutions, is the entity in charge of preparing and periodically publishing the **INGEI**

It regulates the actions that lead us towards low-carbon economic and social development and establishes the **Sustainable System of National Greenhouse Gas Inventories (SSINGEI)**

## Regulated actions:



**PLATAFORMA NACIONAL  
TRANSPARENCIA CLIMÁTICA**

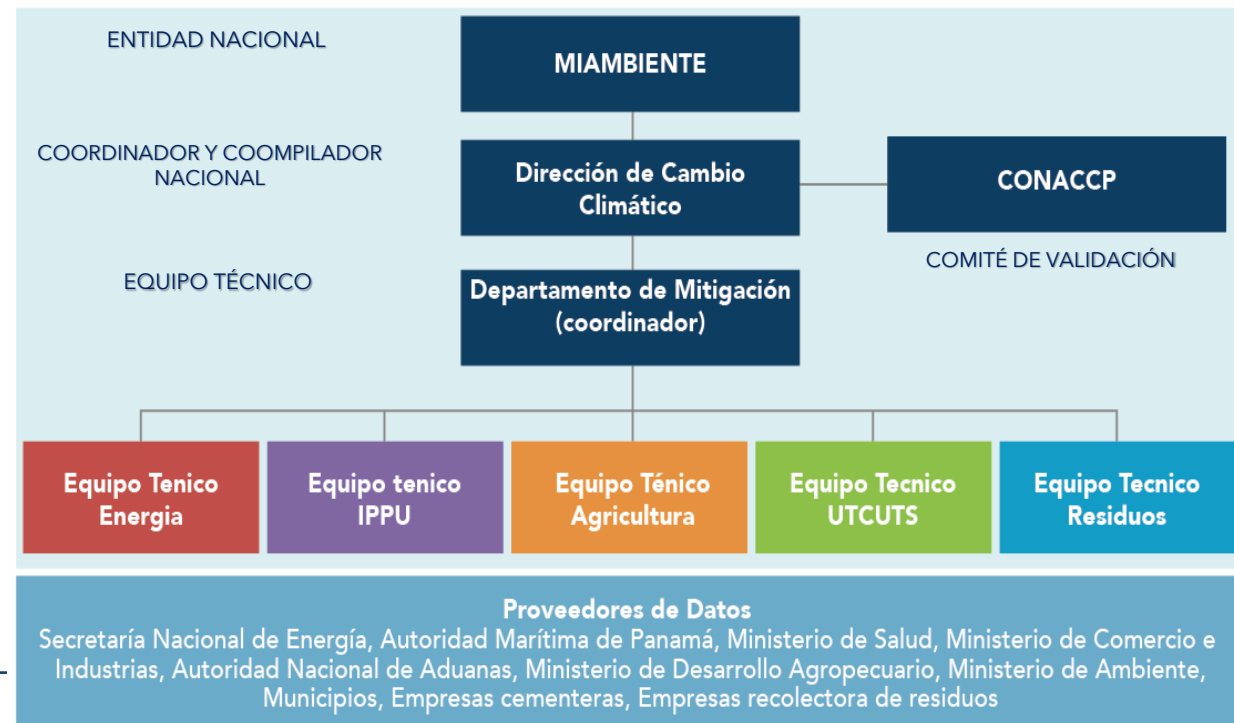
**SSINGEI  
DE PANAMA**



Specific roles and responsibilities

Roles for each role

Rules of procedure

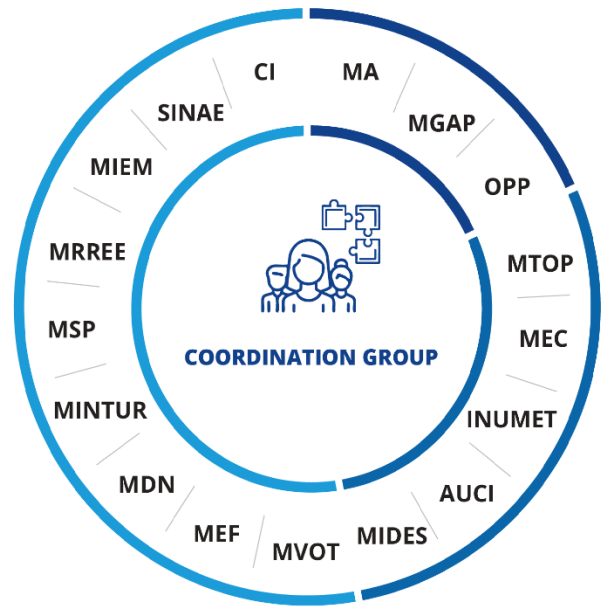




# Example on institutional arrangements (URUGUAY)



## NATIONAL CLIMATE CHANGE RESPOND SYSTEM (SNRCC)



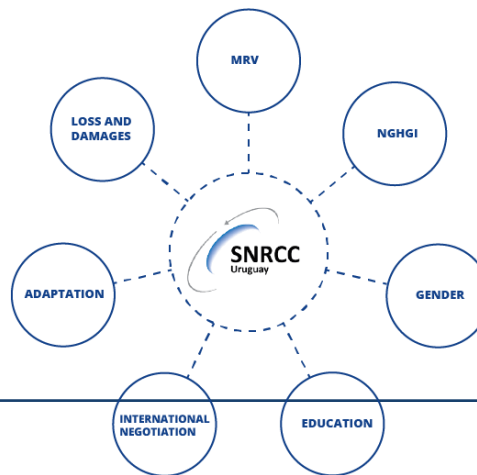
- SNRCC PRESIDENCY
- SNRCC MEMBERS
- GUEST INSTITUTIONS



ADVISORY COMMISSION



## WORKING GROUPS



Progress tracker of the Nationally Determined Contribution and other related indicators

Español English

Consult here the progress and methodological information of the global and specific objectives to mitigate climate change, as well as the mitigation, adaptation and capacity building measures contained in Uruguay's commitments on Climate Change established in the first [Nationally Determined Contribution \(NDC\)](#)

### NDC's Objectives

View by **Objectives** Measures

Year of publication of the information

2023

Type

Unconditional  Conditional

Global objectives for GHG emissions intensity regarding the evolution of the economy

Energy IPPU

CO<sub>2</sub>/GDP

24% reduction in CO<sub>2</sub> emissions intensity per real GDP unit, from base year 1990

Target Year 2025 **24%**  
Last available value **20%** (Year 2020)  
Progress **83%**  
[Information sheet](#)



Energy IPPU AFOLU Waste

CH<sub>4</sub>/GDP

57% reduction in CH<sub>4</sub> emissions intensity per real GDP unit, from base year 1990

Target Year 2025 **57%**  
Last available value **50%** (Year 2019)  
Progress **88%**  
[Information sheet](#)



## NDC TRACKING PLATFORM

## B. Description of a Party's NDC



Each Party **shall** provide a description of its NDC under Article 4, against which progress will be tracked. The information provided **shall** include the following, **as applicable**, including any updates to information previously provided:

Related CTF:  
Appendix

	Description
<b>Target(s) and description</b> , including target type(s)*, as applicable	
<b>Target year(s) or period(s)</b> , and whether they are single-year or multi-year target(s), as applicable	
<b>Reference point(s)</b> , level(s), baseline(s), base year(s) or starting point(s), and their respective value(s), as applicable	
<b>Time frame(s)</b> and/or periods for implementation, as applicable	
<b>Scope and coverage</b> , including, as relevant, sectors, categories, activities, sources and sinks, pools and gases, as applicable	
Intention to use cooperative approaches that involve the use of <b>ITMOs</b> under Article 6 towards NDCs under Article 4 of the Paris Agreement, as applicable	
Any updates or clarifications of previously reported information, as applicable	

- Table on a **voluntary basis**, but information is mandatory “**shall**”.
- Parties with **both unconditional and conditional targets** in their NDC may add a row to the table to describe conditional targets.
- This information **is already available in NDC via ICTU**, ensure consistency or explain changes/updates.

**\* Examples of target types:**

- economy-wide absolute emission reduction,
- emission intensity reduction,
- emission reduction below a projected baseline,
- mitigation co-benefits of adaptation actions or economic diversification plans, PaMs....



# Example on description of NDC (BELIZE)



NDC Item	Description
Indicator descriptor	Number of KtCO <sub>2</sub> eq emissions avoided per year as compared to a baseline BAU projection.
Relation to NDC	This indicator measures progress towards the overall mitigation target in the NDC.
<b>Target(s) and description</b> , including target type(s)*, as applicable	Economy wide target that states "to avoid a cumulative emissions total of 5,647 KtCO <sub>2</sub> e between 2021 and 2030 (peaking at 1,080 KtCO <sub>2</sub> e in avoided emissions in 2030)."
<b>Target year(s) or period(s)</b> , and whether they are single-year or multi-year target(s), as applicable	<i>Target year:</i> 2030
<b>Reference point(s)</b> , level(s), baseline(s), base year(s) or starting point(s), and their respective value(s), as applicable	<i>Reference point/base year:</i> 2017 (since 4th GHG inventory was used) <i>Starting point:</i> 2021 <i>Baseline:</i> emissions in 2017 (-5871.54 Gg CO <sub>2</sub> e)
<b>Time frame(s)</b> and/or periods for implementation, as applicable	2021 to 2030
<b>Scope and coverage</b> , including, as relevant, sectors, categories, activities, sources and sinks, pools and gases, as applicable	<i>Mitigation sectors:</i> energy, forestry, agriculture, waste <i>Gases:</i> Carbon dioxide, methane, nitrous oxide
Intention to use cooperative approaches that involve the use of <b>ITMOs</b> under Article 6 towards NDCs under Article 4 of the Paris Agreement, as applicable	Yes, a Climate Change and Carbon Markets Initiative Bill currently under development would facilitate the sale of carbon credits. The bill will potentially be approved in 2025 and thereafter the appropriate regulations will be developed to facilitate its implementation. ....
Any updates or clarifications of previously reported information, as applicable	NA



1. **Form groups of 5-6 people, identify a facilitator to moderate discussions in the group**
2. **Familiarize** yourself with the **NDC of Grenada**
3. **Familiarize yourself with the Checklist: Table NDC-A and Table NDC-B**
4. **Discuss and identify** available data and information associated with the MPG provisions, identify capacity constraints and needs (relevant information may be available in NC, NDC and other national reports)
5. **Fill in CTF-Appendix** (Description of a Party's NDC)
6. **Report back** to the room on your reflections and experience with the exercise (5 minutes each)
7. **Plenary discussion** and additional reflections

30  
minutes

20  
minutes

## NDC2 of Grenada

<https://unfccc.int/sites/default/files/NDC/2022-06/GrenadaSecondNDC2020%20-%2001-12-20.pdf>



**GRENADA**

**SECOND NATIONALLY  
DETERMINED  
CONTRIBUTION**

November 30, 2020



## BTR Checklists: Tables NDC-A and NDC-B

### CHECKLIST FOR REPORTING ON PROGRESS OF NDC

Table NDC-A: National circumstances and institutional arrangements

*In providing information below, a Party may reference previously reported information) (para. 63 of the MPGs).*

Reporting requirements in MPGs	Data available or can be produced (Yes/No/NA)	Capacity constraints/ flexibility to be applied	Area of improvement and time frame
59. Each Party shall describe its national circumstances relevant to progress made in implementing and achieving its NDC under Article 4 of the Paris Agreement, including: (a) Government structure; (b) Population profile; (c) Geographical profile; (d) Economic profile; (e) Climate profile; (f) Sector details.			
60. Each Party shall provide information on how its national circumstances affect GHG emissions and removals over time.			
61. Each Party shall provide information on the institutional arrangements in place to track progress made in implementing and achieving its NDC under Article 4, including those used for tracking internationally transferred mitigation outcomes, if applicable, along with any changes in institutional arrangements since its most recent BTR.			
62. Each Party shall provide information on legal, institutional, administrative and procedural arrangements for domestic implementation, monitoring, reporting, archiving of information and stakeholder engagement related to the implementation and achievement of its NDC under Article 4.			

Table NDC-B: Description of a Party's nationally determined contribution

Reporting requirements in MPGs	Data available or can be produced (Yes/No/NA)	Capacity constraints/ flexibility to be applied	Area of improvement and time frame
Each Party shall provide a description of its NDC under Article 4, against which progress will be tracked. The information provided shall include the following, as applicable, including any updates to information previously provided: (a) Target(s) and description, including target type(s) (i.e. economy-wide absolute emission reduction, emission intensity reduction, emission reduction below a projected baseline, mitigation co-benefits of adaptation actions or economic diversification plans, policies and measures, and other); (b) Target year(s) or period(s), and whether they are single-year or multi-year target(s); (c) Reference point(s), level(s), baseline(s), base year(s) or starting point(s), and their respective value(s); (d) Time frame(s) and/or periods for implementation; (e) Scope and coverage, including, as relevant, sectors, categories, activities, sources and sinks, pools and gases; (f) Intention to use cooperative approaches that involve the use of internationally transferred mitigation outcomes under Article 6 towards NDCs under Article 4 of the Paris Agreement; (g) Any updates or clarifications of previously reported information (i.e. recalculation of previously reported inventory data, or greater detail on methodologies or use of cooperative approaches).			

## CTF excel sheets: Appendix (Description of a Party's NDC)

Appendix	
Description of a Party's nationally determined contribution under Article 4 of the Paris Agreement, including updates	
	Description
Target(s) and description, including target type(s), as applicable <sup>b, c</sup>	
Target year(s) or period(s), and whether they are single-year or multi-year target(s), as applicable	
Reference point(s), level(s), baseline(s), base year(s) or starting point(s), and their respective value(s), as applicable	
Time frame(s) and/or periods for implementation, as applicable	
Scope and coverage, including, as relevant, sectors, categories, activities, sources and sinks, pools and gases, as applicable	
Intention to use cooperative approaches that involve the use of ITMOs under Article 6 towards NDCs under Article 4 of the Paris Agreement, as applicable	
Any updates or clarifications of previously reported information, as applicable	

1 Note: This table is to be used by Parties on a voluntary basis.  
2 a) Each Party shall provide a description of its NDC under Article 4, against which progress will be tracked. The information provided shall include required information, as applicable, including any updates to  
3 b) For example: economy-wide absolute emission reduction, emission intensity reduction, emission reduction below a projected baseline, mitigation co-benefits of adaptation actions or economic diversification plans,  
4 policies and measures, and other (para. 64(g) of the MPGs).  
5 c) Parties with both unconditional and conditional targets in their NDC may add a row to the table to describe conditional targets.  
6 d) For example: recalculation of previously reported inventory data, or greater detail on methodologies or use of cooperative approaches (para. 64(g) of the MPGs).  
7

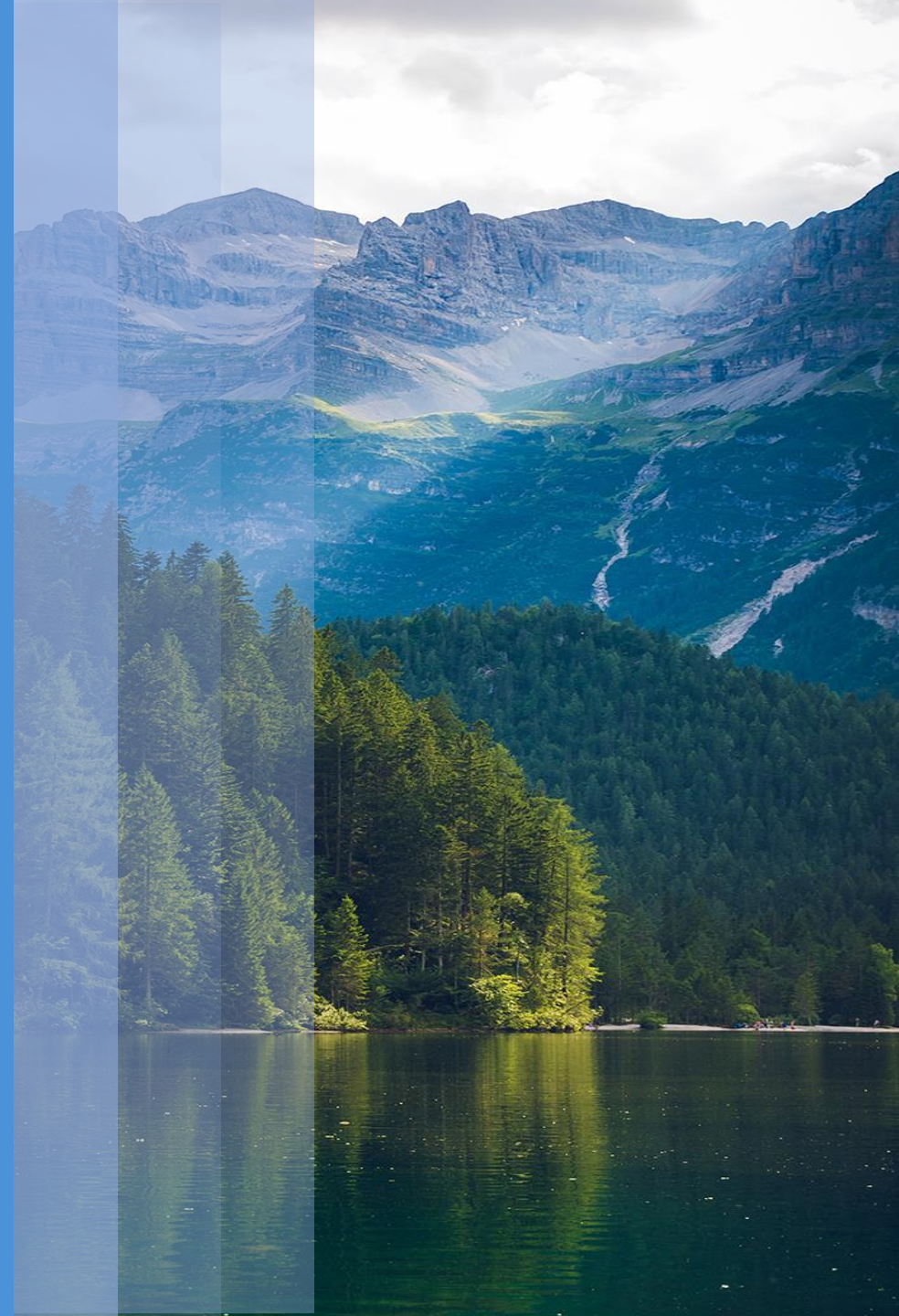
**FOCUS:**

---

**C. Information necessary to track progress  
made in implementing and achieving NDCs**



**United Nations**  
Climate Change Secretariat



## C. Information on tracking progress of NDCs



Each Party **shall** identify **indicator(s)**  
(*quantitative or qualitative; relevant to the NDC*)

Each Party **shall** provide in a **structured summary**:

- **For each indicator:** Reference point(s), level(s), baseline(s), base year(s); and the most recent information for each reporting year; and compare these
- **Methodology and accounting approach** used for its NDC target, construction of baseline, and each indicator identified;

Each Party **with an NDC that consists mitigation co-benefits of adaptation actions and/or economic diversification plans, shall** provide information on domestic policies and measures implemented to address social and economic consequences of **response measures**.

**Mandatory to identify indicators**

**Methodologies and accounting approaches for each indicator**

**If “mitigation co-benefits”, then “response measures” ...**



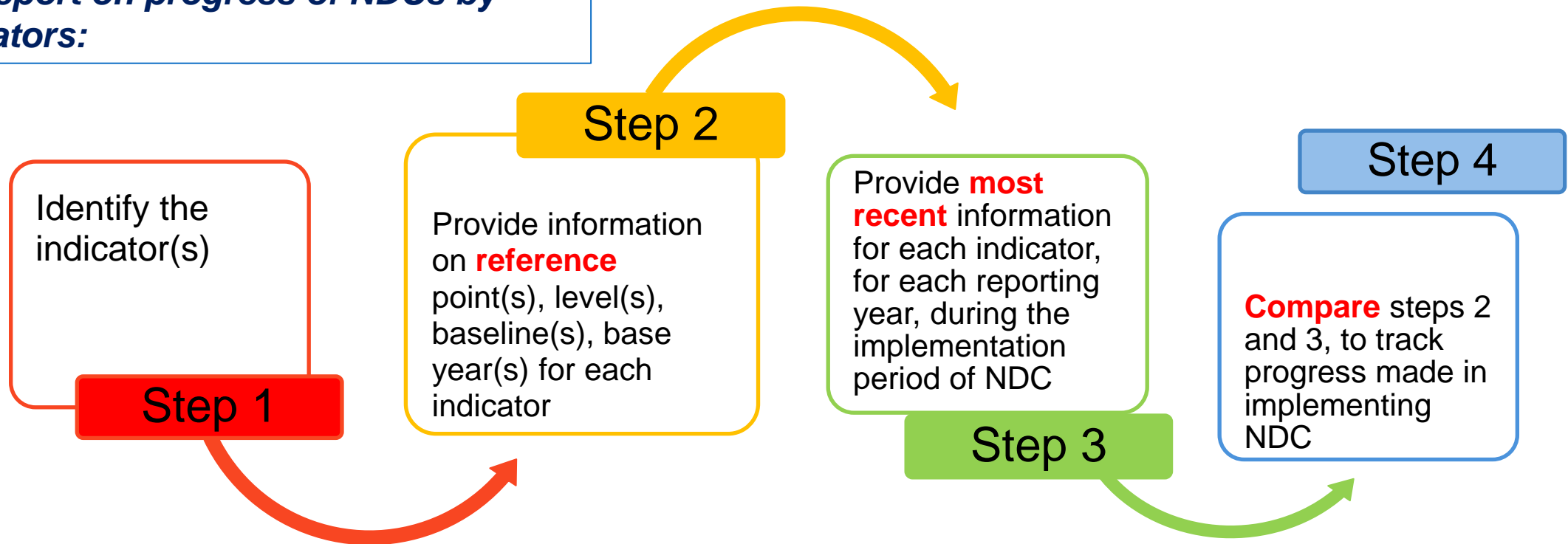
Related CTFs:

Tables 1, 2, 3 & 4

## C. Information on tracking progress of NDCs



**Overview of steps for Parties to track and report on progress of NDCs by indicators:**



- *For the first BTR that contains information on the end year of NDC, provide assessment of whether target is achieved. (i.e. if target year is 2025 and if you are reporting t-2, then probably in BTR3)*





Type of NDC goal	Relevant indicators	Unit
Emission reduction or limitation target relative to a base year	<p>GHG emissions</p> <ul style="list-style-type: none"> <li>As reported in the national GHG inventory adapted to the specific scope of the target (e.g., gases and sectors covered)</li> <li>If applicable, including use of market-based mechanisms (ITMOs)</li> </ul>	kt CO <sub>2</sub> eq
Emission reduction target below a projected BAU level	<p>Relationship (e.g., difference in %) between</p> <ul style="list-style-type: none"> <li>GHG emissions in the BAU target year / period</li> <li>GHG emissions as reported in the national GHG inventory adapted to the specific scope of the target (e.g., gases and sectors covered), including use of market-based mechanisms, and adapted to the specific timeframe of the target (e.g., where a multi-year target-period applies)</li> </ul>	%
Peaking Target	<p>GHG emissions in all years leading to the current year</p> <ul style="list-style-type: none"> <li>As reported in the national GHG inventory adapted to the specific scope of the target (e.g., gases and sectors covered),</li> <li>If applicable, including use of market-based mechanisms (ITMOs)</li> </ul>	kt CO <sub>2</sub> eq

Type of NDC goal	Relevant indicators	Unit
<b>Renewable Energy</b>	<ul style="list-style-type: none"> <li>• Percent of electricity generated by source</li> <li>• Total generation by source</li> <li>• Installed capacity by source</li> </ul>	<ul style="list-style-type: none"> <li>• %</li> <li>• GWh</li> <li>• MW</li> </ul>
<b>Energy Efficiency</b>	<ul style="list-style-type: none"> <li>• Total energy demand or consumption</li> <li>• Energy intensity of the economy</li> </ul>	<ul style="list-style-type: none"> <li>• GWh</li> <li>• TJ / unit of GDP</li> </ul>
<b>Forest cover</b>	<ul style="list-style-type: none"> <li>• Share of land covered by forest</li> <li>• Area covered by forest</li> <li>• Area restored or reforested</li> <li>• Forest stock</li> <li>• CO<sub>2</sub> sequestered per year</li> </ul>	<ul style="list-style-type: none"> <li>• %</li> <li>• ha</li> <li>• ha</li> <li>• m<sup>3</sup></li> <li>• t CO<sub>2</sub> eq</li> </ul>

## 1. Structured summary: Description of the selected indicators

### Indicator(s) selected to monitor progress

National greenhouse gas (GHG) emissions level	Total national greenhouse gas emissions (expressed in tons of CO2 equivalent) as reported in the national GHG inventory
Information on reference point(s), level(s), baseline(s), base year(s) or starting point(s), as appropriate	Target year: 2030 - 13,7 Mt CO2e or 18,2 Mt CO2e (see NDC narrative chapter and below where the inconsistencies identified in the NDC are described, which do not allow this value to be used as a reference). Reference year: 2019. Reference level: 0,409 Mt CO2e / 9,5 Mt CO2e / 11,6 Mt CO2e [as data included in the NDC and whose inconsistency has been identified and described).
Updates according to any recalculation of the GHG inventory, , as appropriate	Emissions in 2019 (inventory included in this RTGS): 2.7Mt CO2e (excluding LULUCF); -15Mt CO2e (including LULUCF)
Relationship with NDC	objective of the NDC is expressed in terms of the reduction of total national GHG emissions in 2030 compared to the baseline scenario, the national GHG emissions level is the indicator to monitor this objective.

## 2. Structured summary: Definitions needed to understand the NDC

<i>Definition required to understand each indicator:</i>	
Total national greenhouse gas emissions (expressed in tons of CO2 equivalent) as reported in the national GHG inventory	Total national greenhouse gas emissions (expressed in tons of CO2 equivalent) as reported in the national GHG inventory <b>except IPPU sector</b>
<i>Any sector or category defined differently from the national inventory report:</i>	
{Industry}	NA
{Category}	NA
<i>Definition required to understand co mitigation</i>	
{Mitigation Benefit(s)}	NA
<i>Any other relevant definitions:</i>	
{...}	NA

# Example CTFs (Guinea Bissau)



## 3. Structured summary: Accounting methodologies and approaches - consistency with paragraphs 13 and 14 of Article 4 of the Paris Agreement and Decision 4/CMA.1

Reporting Requirement	Description of or reference to the relevant section of the BTR
<b>For the first NDC pursuant to Article 4:</b>	
Accounting approach, including how it is consistent with paragraphs 13 and 14 of Article 4 of the Paris Agreement (paragraph 71 of the GPM)	Guinea-Bissau acknowledges that the estimates of GHG emissions are not yet fully in line with the principles of the MPGs and the IPCC guidelines. However, in the process of developing the NIR as part of this BTR, important steps have been taken to enhance its transparency. Guinea-Bissau is convinced that it is moving in the right direction to ensure environmental integrity, transparency, completeness, comparability and consistency, and to avoid double counting. The NIR identifies areas for improvement as well as training needs for this purpose.
<b>For the second and subsequent NDC pursuant to Article 4, and optionally for the first NDC pursuant to Article 4:<sup>b</sup></b>	
The information on the accounting approach used is consistent with paragraphs 13-17 and Annex II of Decision 4/CMA.1 (paragraph 72 of the GPM).	
Explain how the accounting for anthropogenic emissions and removals is in accordance with the common methodologies and metrics assessed by IPCC and in accordance with Decision 18/CMA.1 (paragraph 1(a) of Annex II to Decision 4/CMA.1)	
Explain how consistency has been maintained between any GHG data and estimation methodologies used for accounting and the Party's GHG inventory pursuant to Article 13(7)(a) of the Paris Agreement, if applicable (paragraph 2(b) of Annex II to Decision 4/CMA.1)	
Explain how overestimation or underestimation was avoided for any projected emissions and removals used for accounting (paragraph 2(c) of Annex II to Decision 4/CMA.1)	
<b>For each NDC pursuant to Article 4:<sup>c</sup></b>	
<b>Accounting for anthropogenic emissions and removals according to common methodologies and metrics assessed by the IPCC and adopted by the CMA:</b>	
Each accounting methodology and/or approach used to assess the implementation and reach of the target(s), as applicable (paragraph 74(a) of the MPGs)	
Each accounting methodology and/or approach used to construct any baseline, to the extent possible (paragraph 74(b) of the MPGs)	
If the accounting methodology or approach used for the indicator(s) in Table 1 differs from those used to assess the implementation and reach of the target, please describe each accounting methodology or approach used to generate the information generated for each indicator in Tables 4 and 5 (paragraph 74(c) of the GPMs)	
Any conditions and assumptions relevant to the realisation of the NDC pursuant to Article 4, as applicable and available (paragraph 75(i) of the MPG)	
Main parameters, assumptions, definitions, data sources and models used, as applicable and available (paragraph 75(a) of the MPGs)	
IPCC guidance used, as applicable and available (paragraph 75(b) of the MPGs)	
Report metrics used as applicable and available (paragraph 75(c) of the MPGs)	
For Parties whose NDCs cannot be accounted for using methodologies covered by the IPCC Guidelines, provide information on their own methodology used, including for NDCs, in accordance with Article 4(6) of the Paris Agreement, if applicable (paragraph 1(b) of Annex II to Decision 4/CMA.1)	
Provide information on methodologies used to monitor progress resulting from the implementation of policies and measures, as appropriate (paragraph 1(d) of Annex II to Decision 4/CMA.1)	
Where applicable to its NDC, any industry, category or activity-specific assumptions, methodologies and approaches consistent with IPCC guidance, taking into account any relevant decision under the Convention, as applicable (paragraph 75(d) of the MPGs)	
For Parties addressing emissions and subsequent removals resulting from natural disturbances on managed land, provide detailed information on the approach used and how it is consistent with the relevant IPCC guidance, as appropriate, or provide the relevant section of the national GHG inventory report containing this information (paragraph 1(e) of Annex II to Decision 4/CMA.1, paragraph 75(d)(i) of the GPMs)	
For Parties accounting for emissions and removals of harvested wood products, provide detailed information on which IPCC approach is used to estimate emissions and removals (paragraph 1(f) of Annex II to Decision 4/CMA.1, paragraph 75(d)(ii) of the MPGs)	
For Parties addressing the effects of age class structure on forests, provide detailed information on the approach used and how it is consistent with the relevant IPCC guidance, as appropriate (paragraph	

## Ensure methodological consistency, including at baselines, between the reporting and implementation of CCDs (paragraph 12(b) of Decision 4/CMA.1):

Explain how consistency has been maintained in the coverage, definitions, data sources, metrics, assumptions and methodological approaches, including in the baselines, between the reporting and the implementation of the CRNs (paragraph 2(a) of Annex II to Decision 4/CMA.1)	
Explain how consistency was maintained between any GHG data and estimation methodologies used for accounting and the Party's GHG inventory pursuant to Article 13(7)(a) of the Paris Agreement, if applicable (paragraph 2(b) of Annex II to Decision 4/CMA.1) and explain the methodological inconsistencies with the Party's most recent national inventory report, if applicable (paragraph 76(c) of the MPGs)	
<b>For Parties applying technical amendments to update benchmarks, benchmarks or projections, the amendments shall reflect one of the following items (paragraph 2(d) of Annex II to Decision 4/CMA.1):</b>	
Technical changes related to technical corrections to the Party's inventory (paragraph 2(d)(i) of Annex II to Decision 4/CMA.1)	
Technical changes related to precision improvements that maintain methodological consistency (paragraph 2(d)(ii) of Annex II to Decision 4/CMA.1)	
Explain how any methodological changes and technical updates made during the implementation of your NDC have been transparently reported (paragraph 2(e) of Annex II to Decision 4/CMA.1)	
<b>endeavour to include all categories of anthropogenic emissions or removals in the NDC and, once a source, sink or activity is included, continue to include it (paragraph 3 of Annex II to Decision 4/CMA.1):</b>	
Explain how all categories of anthropogenic emissions and removals corresponding to your NDC have been accounted for (paragraph 3(a) of Annex II to Decision 4/CMA.1)	
Explain how the Party is endeavouring to include all categories of anthropogenic emissions and removals in its NDC and, once a source, sink or activity is included, continue to include it (paragraph 3(b) of Annex II to Decision 4/CMA.1)	
Please provide an explanation why any categories of anthropogenic emissions or removals are excluded (paragraph 4 of Annex II to Decision 4/CMA.1)	
<b>Each Party participating in cooperative approaches involving the use of ITMOs for a NDC pursuant to Article 4, or authorising the use of mitigation results for international mitigation purposes other than the realisation of its NDC</b>	<b>Given the inconsistencies reported with regards to the NDC, it is not possible to assess progress towards the NDC. Guinea-Bissau will establish such an approach during the preparation of the NDC3.0.</b>
Provide information on any methodologies associated with any cooperative approaches involving the use of ITMOs for a NDC pursuant to Article 4 (paragraph 75(f) of the MPGs)	
Provide information on how each cooperative approach promotes sustainable development, consistent with the decisions taken by the JMC in Article 6 (paragraph 77(d)(iv) of the GMP)	
Provide information on how each cooperative approach ensures environmental integrity consistent with the decisions taken by the CMA in Article 6 (paragraph 77(d)(iv) of the MPGs)	
Provide information on how each cooperative approach ensures transparency, including in governance, consistent with the decisions taken by the JMC in Article 6 (paragraph 77(d)(iv) of the GMP)	
Provide information on how each cooperative approach applies robust accounting to ensure, among other things, avoidance of double counting, consistent with the decisions adopted by the CMA in Article 6 (paragraph 77(d)(iv) of the MPGs)	
Any other information consistent with the decisions taken by the JMC on the Article 6 reporting (paragraph 77(d)(iii) of the MPGs)	

## 4. Structured summary: Monitoring progress in the implementation and realisation of the NDC pursuant to Article 4 of the Paris Agreement

	Unit, as applicable	Reference point(s), level(s), baseline(s), base year(s) or starting point(s){MPGs, p. 67, 77(a)(i)}	NDC implementation period covering information from previous and most recent reporting years, including the end or end of period {MPGs, p. 77(a)(ii-iii)}					Target Level	Target year or period	
			2020	2021	2022	End of year				
<b>Indicator(s) selected to monitor progress towards the implementation and/or realisation of the CRN pursuant to Article 4 of the Paris Agreement: {MPGs, p. 65, 77(a)}</b>										
Annual GHG emissions (except IPPU) and excluding LULUCF	Million tCO <sub>2</sub> e	2.70	2.77	2.85			N/A	2030	In 2022, GHG emissions (excluding LULUCF) are 5.8% above emissions in 2019.	
Where applicable, total GHG emissions and removals consistent with NDC coverage{MPGs, p. 77(b)}	Million tCO <sub>2</sub> e	-15.00	-17.38	-19.70			N/A	2030	In 2022, negative net GHG emissions (including LULUCF) increased by 31% compared to 2019.	
LULUCF sector contribution for each year of the target period or target year, if not included in the inventory time series of total net GHG emissions and removals, as applicable{MPGs, p. 77(c)}	HA	Increase in areas under agroforestry : 20 000 ha	11500	12000	20000			20 000 ha	2025-2030	Progress has been made in increasing the areas cultivated in agro-forestry in Guinea-Bissau and also for the coming years. Guinea-Bissau has integrated sustainable agriculture into the National Development Plan by promoting agroecology, which will allow progress to be monitored.
Each Party participating in cooperative approaches involving the use of ITMOs for a NDC pursuant to Article 4 of the Paris Agreement, or authorising the use of mitigation results for international mitigation purposes other than the realisation of the NDC, shall provide :{MPGs, p. 77(d)}										
Where applicable, an indicative multi-annual emissions, trajectory or budget trajectory for the period of implementation of the NDC (paragraph 7(a)(i), attached to the Decision -/CMA.3)										
Where applicable, multiannual emission path, trajectories or budget for the NDC implementation period that is consistent with the NDC (paragraph 7(b), attached to the Decision -/CMA.3)										

# Hands-on exercise to take stock of available/needed information and identify indicator(s)



1. **Form groups of 5-6 people, identify a facilitator**
2. **Familiarize** yourself with the goal(s) and target(s) outlined in the **NDC of Grenada**
3. **Discuss and identify appropriate indicator(s)** to track progress of the goals/targets of the NDC2 of Grenada, and **elaborate details** for the selected indicator(s)
4. **Discuss and identify** available data and information associated with the MPG provisions, identify capacity constraints and needs cross (use the BTR checklist for NDC)
5. **Fill in the CTFs 1 to 4 (excel sheets)**
6. **Report back** to the room on your reflections and experience with the exercise (5 minutes each)
7. **Plenary discussion** and additional reflections

20  
minutes

20  
minutes





# FOCUS:

---

**D. Mitigation policies, actions and plans**

**E. Summary of GHG emissions and removals**

**F. Projections of GHG emissions and removals**



**United Nations**  
Climate Change Secretariat





## D. Mitigation policies, actions and plans



- Each Party **shall** provide information on **policies, actions and measures that support implementation of its NDC**, focusing on those that have the most significant impact on GHG emissions or removals and those impacting key categories in the national GHG inventory.
- To the extent possible, Parties **shall** organize reporting of actions **by sector** (energy, transport, IPPU, agriculture, LULUCF, waste, other), in a tabular format, including relevant information on mitigation co-benefits, as applicable:

Name	Description	Objectives	Type of instrument (regulatory, economic, other)	Status (planned, adopted, implemented)	Sectors affected	Gasses affected	Start year of implementation	Implementing entity
------	-------------	------------	--	---	---------------------	--------------------	---------------------------------	------------------------

- Each Party may also provide information on related costs, non-GHG mitigation benefits and how these actions interact with each other, as appropriate
- Each Party **shall** provide information **on estimates of expected and achieved GHG emission reductions [FX: encouraged]; and methodologies and assumptions used, to the extent possible**
- Each Party should: identify PAMs no longer in-place and explain why; provide information on how its PAMs are modifying longer-terms trends in GHG emissions and removals



Related CTFs:

Table 5

Table 22 – Energy sector policies and measures

PaM	Sector(s) affected	GHG(s) affected	Objective and/or activity affected	Type of instrument	Status	Start year of implementation	Implementing entity or entities	Estimate of mitigation impact (not cumulative, in kt CO <sub>2</sub> eq.) 2030
1 - Renewable Energy Sources Support Mechanism (YEKDEM)	Energy	CO <sub>2</sub>	Increase in renewable power generation	Regulatory, Fiscal	Implemented	2011	MENR, EMRA	NE
2 - Renewable Energy Resource Areas (YEKAs)	Energy	CO <sub>2</sub>	Increase in renewable power generation	Fiscal, Economic	Implemented	2016	MENR	NE
3 - Electricity Generation from Nuclear Energy	Energy	CO <sub>2</sub>	Decreasing GHG emissions through use of nuclear energy	Infrastructure Development	Adopted	2010	MENR	NE
4 - Cogeneration and Trigeneration	Energy	CO <sub>2</sub>	Dissemination of cogeneration systems with the cogeneration plant efficiency certificate issued for the facilities that provide minimum efficiency value, electricity/heat ratio value and primary energy saving of at least ten percent or more	Regulatory	Implemented	2014	MENR	NE

Table 24 – Transport sector policies and measures

PaM	Sector(s) affected	GHG(s) affected	Objective and/or activity affected	Type of instrument	Status	Start year of implementation	Implementing entity or entities	Estimate of mitigation impact (not cumulative, in kt CO <sub>2</sub> eq.) 2030
1 - Modal shift to public transport	Transport	CO <sub>2</sub>	Increasing low-carbon transport modes share in public transport	Infrastructure Development	Implemented	2006	MoTI	NE
2 - Strengthening Railway	Transport	CO <sub>2</sub>	Increasing the share of railways in passenger and freight transport	Infrastructure Development	Implemented	2006	MoTI	NE
3 - Blending Ethanol to Gasoline Types	Transport	CO <sub>2</sub> , N <sub>2</sub> O, CH <sub>4</sub>	Decreasing GHG emissions through increase in combustion efficiency in gasoline burning vehicles	Regulatory	Implemented	2012	EMRA, MENR, MoTI, MoEUCC	NE
4 - Blending Biodiesel in Diesel Types	Transport	CO <sub>2</sub> , N <sub>2</sub> O, CH <sub>4</sub>	Increasing share of biofuels use in diesel vehicles	Regulatory	Implemented	2017	EMRA, MENR, MoTI, MoEUCC	NE
5 - Promotion of electric and hybrid vehicles	Transport	CO <sub>2</sub>	Promotion of vehicles with alternative fuel types (including electric and hybrid vehicles), through fiscal incentives	Fiscal	Implemented	2018	MoTF, MoTI, MoEUCC	NE

# E. Summary of greenhouse gas emissions and removals



- Each Party, that submits a stand-alone national inventory report, **shall** provide **a summary of its GHG emissions and removals**.
- This information **shall** be provided for those reporting years corresponding to the Party’s most recent national inventory report, in a tabular format.
- This information should match the one reported in the GHG Inventory CRT 10 emission trends – summary

GREENHOUSE GAS EMISSIONS AND REMOVALS	Reference year/period for NDC <sup>(1)</sup>	Base year <sup>(2)</sup>	1990 <sup>(1)</sup>	(Years 1991 to 2019)	(Years 1991 to 2019)	2020	(Years 2021 to latest reported year)	(Years 2021 to latest reported year)	(Years 2021 to latest reported year)	Change from [1990][base year][reference year][period] to latest reported year (%)
CO <sub>2</sub> equivalents (kt) <sup>(3)</sup>										
CO <sub>2</sub> emissions without net CO <sub>2</sub> from LULUCF										
CO <sub>2</sub> emissions with net CO <sub>2</sub> from LULUCF										
CH <sub>4</sub> emissions without CH <sub>4</sub> from LULUCF										
CH <sub>4</sub> emissions with CH <sub>4</sub> from LULUCF										
N <sub>2</sub> O emissions without N <sub>2</sub> O from LULUCF										
N <sub>2</sub> O emissions with N <sub>2</sub> O from LULUCF										
HFCs										
PFCs										
Unspecified mix of HFCs and PFCs										
SF <sub>6</sub>										
NF <sub>3</sub>										
Total (without LULUCF)										
Total (with LULUCF)										
Total (without LULUCF, with indirect)										
Total (with LULUCF, with indirect)										
GREENHOUSE GAS SOURCE AND SINK CATEGORIES										
	Reference year/period for NDC <sup>(1)</sup>	Base year <sup>(2)</sup>	1990	(Years 1991 to 2019)	(Years 1991 to 2019)	2020	(Years 2021 to latest reported year)	(Years 2021 to latest reported year)	(Years 2021 to latest reported year)	Change from 1990[base year][reference year][period] to latest reported year (%)
CO <sub>2</sub> equivalents (kt) <sup>(3)</sup>										
1. Energy										
2. Industrial processes and product use										
3. Agriculture										
4. Land use, land-use change and forestry <sup>(4)</sup>										
5. Waste										
6. Other										
Total (with LULUCF) <sup>(8)</sup>										

**Related CTFs:**  
**Table 6**



## F. Projections of greenhouse gas emissions and removals



- Each Party **shall** report **projections for emissions and removals [FX: encouraged]**.
- Projections will be indicative on future trends, and will not be used to assess progress towards NDC, unless a Party identified the reported projection as its baseline.

“with measures”  
(shall)

“with additional  
measures” (may)

“without measures”  
(may)

- Projections **shall** begin from most recent year in the Party’s inventory report and extend **at least 15 years beyond** the next year ending in zero or five **[FX: extend their projections at least to the end point of their NDC]**.
- Each Party should provide information on the **methodology used to develop projections**:
  - Models, approaches, key assumptions, parameters (*GDP rate/level, population growth rate/level, etc.*);
  - Changes in methodology since the latest BTR;
  - Assumptions on policies and measures included in WM and WAM projections, if included;
  - Sensitivity analysis for the projections.
- Each Party **shall** report projections for **key indicators to determine progress towards its NDC**.
- Each Party **shall** include projections on a **sectoral basis and by gas, as well as for the national total**
- Projections **shall** be presented relative to actual inventory data (for preceding years) and be provided with and without LULUCF.



**[FX: can report using less detailed methodology or coverage]**

Related CTFs:

Tables 7,8,9,10, 11

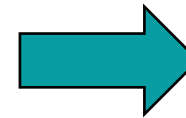
## 2.6 SUMMARY OF GHG EMISSIONS AND REMOVALS

Refer to Chapter 1

## 2.7 PROJECTIONS OF GHG EMISSIONS AND REMOVALS

Due to capacity constraints the projections of GHG emissions and removals could not be completed in accordance with Annex 3 Paragraph 92 of the MPGs. However, Zimbabwe envisages to conduct the projections in the next cycle of reporting (due December 2026).

✓ Flexibility applied.



**What could be the specific capacity constraint?**

---

## NDC2 of Grenada

<https://unfccc.int/sites/default/files/NDC/2022-06/GrenadaSecondNDC2020%20-%202001-12-20.pdf>



**GRENADA**

SECOND NATIONALLY  
DETERMINED  
CONTRIBUTION

November 30, 2020



## National strategies, plans and policies

Grenada's National Climate  
Change Policy

Energy policies

Transport policies

Waste policies

Agriculture, land, forest  
policies

National Sustainable  
Development Plan

etc.

**BTR Checklists:  
Tables NDC- D, E F**

**CTF excel sheets:  
5 to 12**

- Apply **flexibilities** to the full extent
- **Strategize** your next steps: what are your priorities, what are your sustainable development goals, what is the story you would like to share, how do you wish to use this document,...
- **Focus on enhancing the institutional arrangements:** Better arrangements will pave the way to better BTRs over time! **Formalize your arrangements to keep up the momentum!**
- Explore synergies with other processes: NDC3.0, SDGs, ...
- Understand and promote the **benefits of ETF and BTRs at the national level** - with a view to facilitate political buy-in and high-level support
- Use the opportunity to identify and communicate your **support needs** to meet your priorities, address challenges and gaps
- **Do not** wait until you have the perfect system, improve over time!



---

Thank you



**United Nations**  
Climate Change Secretariat

