

# Enhancing Climate Transparency: Capacity Building Workshop for Sri Lanka's First BTR

## Definition and development of NDC indicators/SMART targets

**Jaypalsinh CHAUHAN**

CBIT-GSP Regional Coordinator for Asia UNEP-CCC

[jaypalsinh.chauhan@un.org](mailto:jaypalsinh.chauhan@un.org)

Executed by:



Funded by:



Implemented by:



18 November 2024

# What is an indicator?



**MPGs: Information necessary to track progress made in implementing and achieving its NDC.**

# Why we need indicators?

A system of **tracking progress** is useful to identify whether an initiative is **on track** and being **implemented as planned**, and any **gaps that will need to be addressed** to deliver the expected results.

**In MPGs:** P65. Each Party shall identify **the indicator(s)** that it has selected to track progress towards the implementation and achievement of its NDC under Article 4.

Indicators shall be **relevant to a Party's NDC** and may be either **qualitative or quantitative**.



# Type of indicators

## Quantitative Progress Indicators

Consists of a **unit of measurement and the value** (e.g., 50 MW). Often relate to the inputs for the mitigation action.

- Measuring aggregate emissions reduction;
- Identifying co-benefits of mitigation actions, policies and measures.

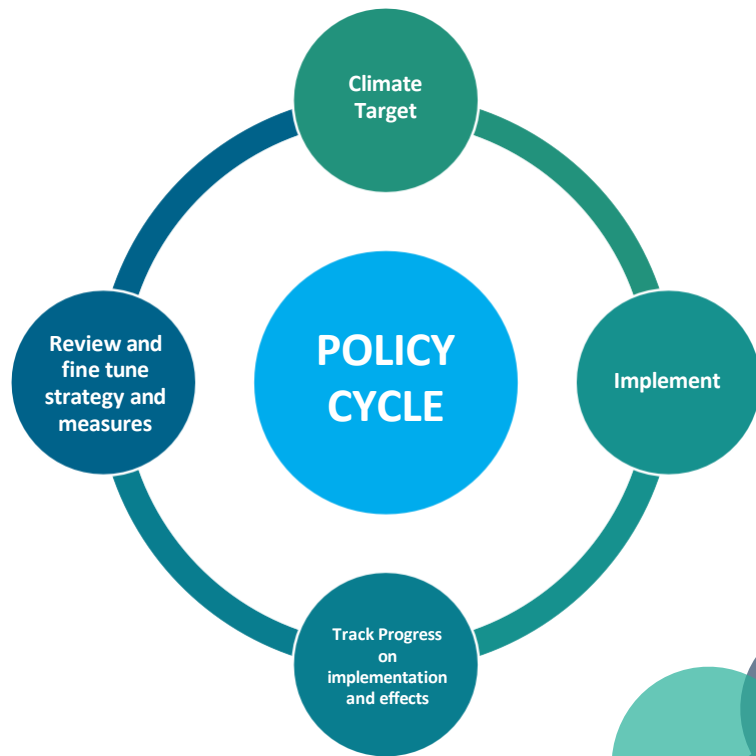
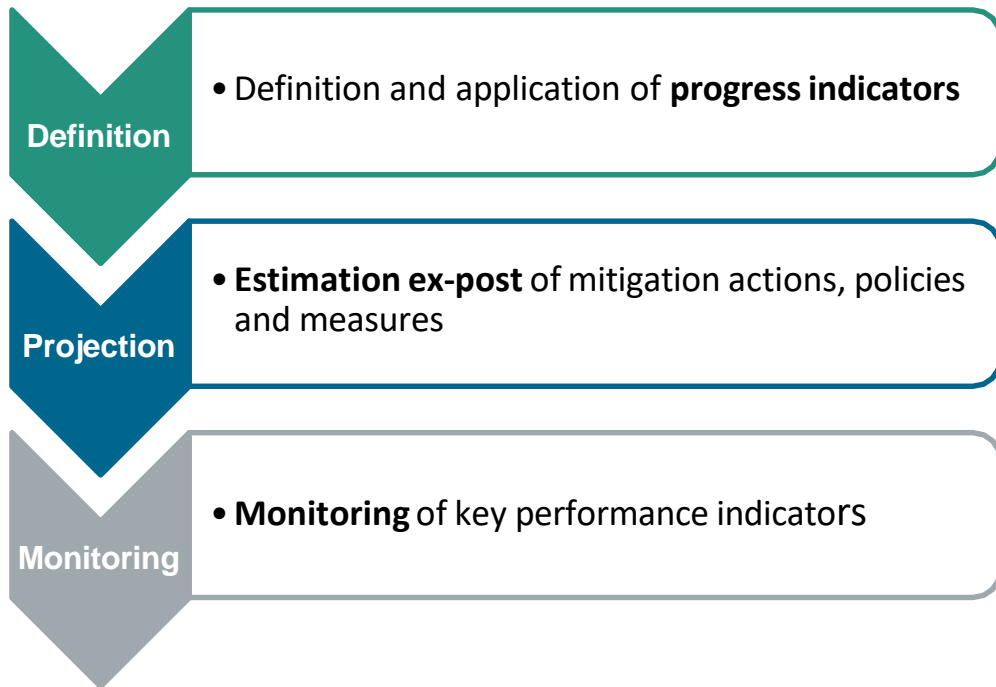
## Qualitative Progress Indicators

**Descriptive and non-numerical**  
It include subjective assessments of progress.

**Useful where parameters are difficult to quantify**, (non-GHG effects).

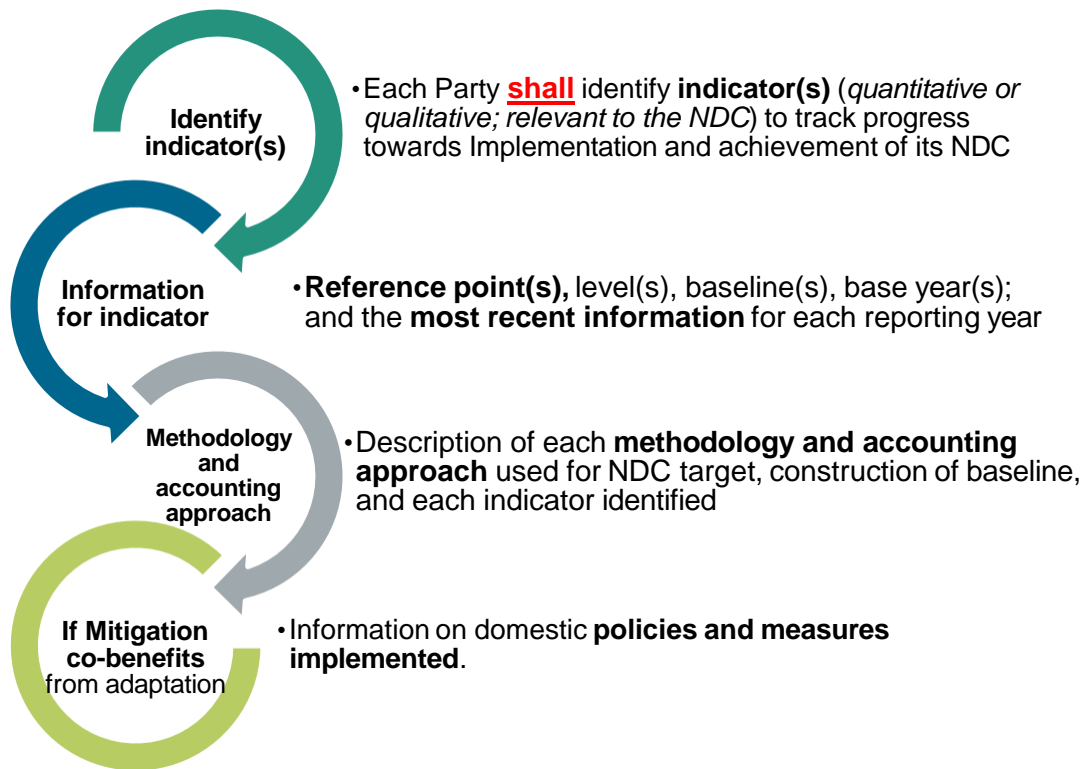
# Steps for tracking progress

Tracking progress needs to cover three main steps:

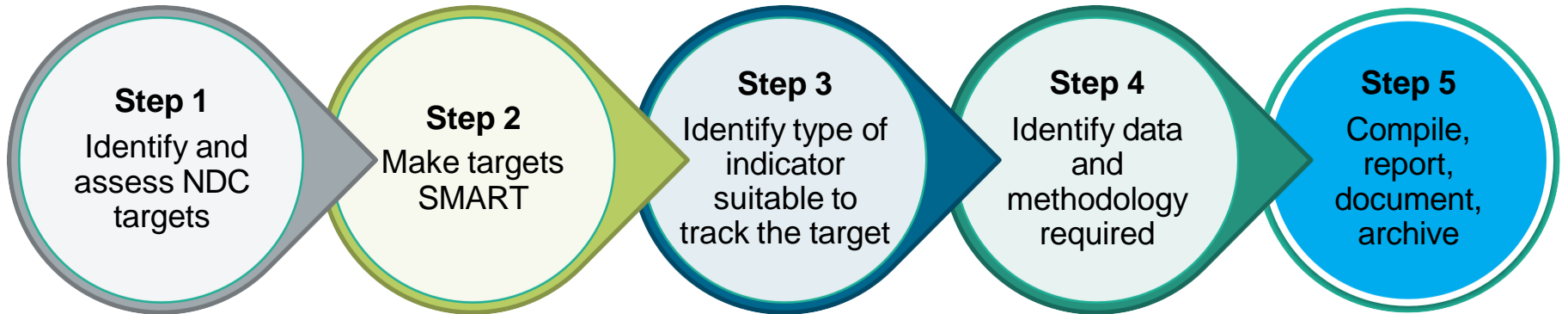


# Information necessary to track progress made in implementing and achieving NDCs

According to the MPGs:

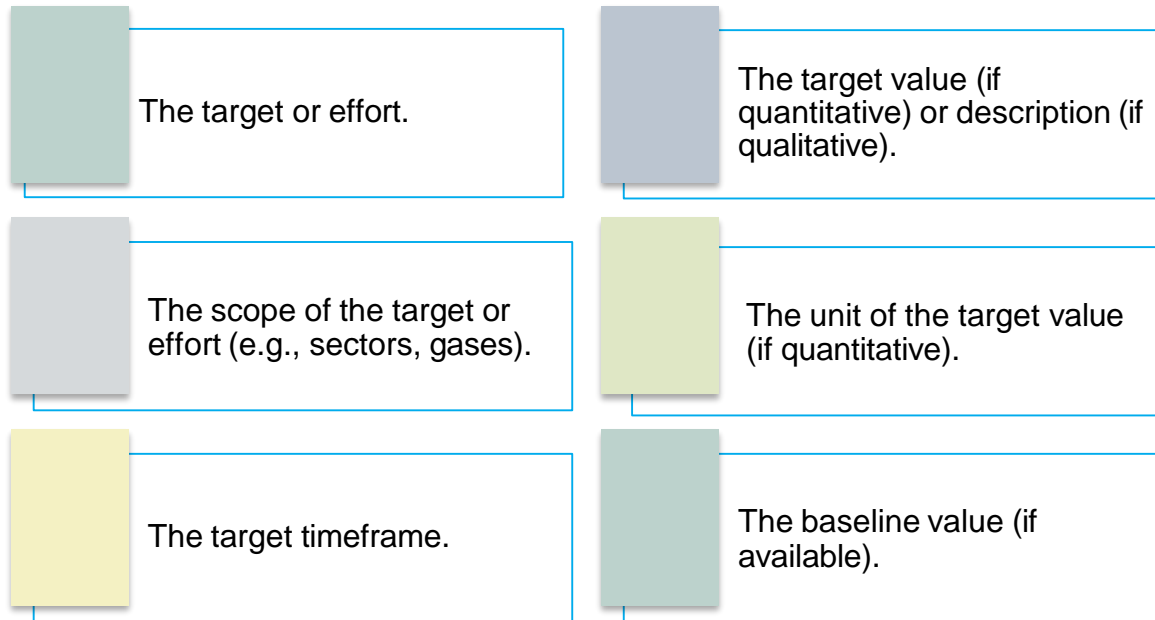


# Identifying and compiling NDC indicators - Step by step approach



# Step 1: Identify and assess NDC targets

Identify all mitigation and adaptation targets, List in a tabular format, including :





## Step 1: Identify and assess NDC targets - GHG related targets

| NDC target type   | Country Examples  | Scope  | Target value | Target unit           | Target timeframe | Value in reference / Base period / BAU  |
|---|---|--|--------------|-----------------------|------------------|---|
| <b>Absolute emission reduction or limitation target relative to a base year</b> | Brazil NDC commits 'to reduce its greenhouse gas emissions in 2025 by 37%, compared with 2005'.   | CO <sub>2</sub> , CH <sub>4</sub> , N <sub>2</sub> O, perfluorocarbons (PFCs), hydrofluorocarbons (HFCs) and SF <sub>6</sub> | 37           | %                     | 2025             | Base year emission estimation in the fourth BUR is around 2.4 Mio. kt of CO <sub>2</sub> eq. May be updated according to the latest inventory.                            |
| <b>Emission reduction target below a BAU level</b>                              | Morocco's NDC unconditional) reduction target, '18.3% below BAU emissions by 2030'.   | CO <sub>2</sub> , CH <sub>4</sub> , N <sub>2</sub> O and HFCs  | 18.3         | %                     | 2030             | The BAU scenario is projected approx. 1.4 Mio. kt CO <sub>2</sub> eq in 2030  |
| <b>Fixed-level target</b>   | Argentina's NDC fixed-level target, will not exceed net emissions of 359 Mt CO <sub>2</sub> eq by 2030 to 369 Mt CO <sub>2</sub> eq for 2030. | CO <sub>2</sub> , CH <sub>4</sub> , N <sub>2</sub> O, HFCs and PFCs  | 359          | Mt CO <sub>2</sub> eq | 2030             | <u>No reference value is used.</u> But in its NDC submission Argentina compares the level of ambition to its 2016 emissions, which were around 364 Mt CO <sub>2</sub> eq. |

## Step 1: Identify and assess NDC targets – Non-GHG related targets

| NDC target type                 | Country Examples   | Scope | Target value              | Target unit | Target timeframe | Value in reference / Base period / BAU |
|---------------------------------|--|-------|---------------------------|-------------|------------------|--|
| <b>Sectoral non-GHG targets</b> | China has pledged to 'increase the share of non-fossil fuels in primary energy consumption to around 25%.  | N/A   | 25                        | %           | 2030             | N/A                                    |
| <b>Mitigation actions</b>       | <u>Bangladesh</u> aims to implement renewable energy projects, enhance efficiency of existing power plants, improve technology for power generation. | N/A   | Implementation of actions | MW          | 2030             | N/A                                    |

## Step 1: Identify and assess NDC targets – Adaptation targets

| Sector/focus            | Country Examples   | Target value / Qualitative description  | Target unit | Target timeframe |
|-------------------------|--|---|-------------|------------------|
| <b>Water Quality</b>    | Expand the scope of Brazil's National Drinking Water Quality Surveillance Program (VIGIAGUA) to reach 85% of Brazilian municipalities, by 2019.  | Engagement with 85% of Brazilian municipalities   | %           | 2019             |
| <b>Human Settlement</b> | Fiji to promote the enforcement of appropriate national building codes and infrastructure design on critical facilities and public assets.   | Enforcement of national building codes to support compliance of disaster resilient infrastructure | N/A         | 2030             |
| <b>Agriculture</b>      | Kenya to up-scale and promote drought tolerant traditional high value crops; water harvesting for crop production; index-based weather insurance; conservation agriculture; agro-forestry; and Integrated soil fertility management. | Implementation of disaster resilient agricultural techniques and management                       | N/A         | 2030             |

## Step 2: Make targets SMART

The more general targets are defined, the more work will be required.



What to do. **Assess** and, if necessary, **clarify the scope** covered by the target. Where necessary, clarify also other elements, e.g., **units, reference / baseline levels**.

## Step 2: Make targets SMART

**S**

Specific

The Target is clearly defined, so there cannot be different interpretations of it

**M**

Measurable

The Target value can be measured quantitatively or qualitatively

**A**

Ambitious

Achieving the Target requires ambitious action

**R**

Relevant

The Target relates to a relevant impact of a mitigation action

**T**

Time-bound

The Target relates to a point in time of timeframe



# Step 2: Make targets SMART



**Achieving a share of 28% of renewable power by 2030 :**

## Exemple 1

- This is not a fully SMART target yet.
- What should the 28% refer to – e.g., power generation (including or excluding imports and exports?) or capacities installed?
- Which technologies should be counted as renewable power technologies?



**Increase public awareness of climate changes effects and impacts on general health :**

## Exemple 2

- How do you tell whether or not the indicator has been achieved?
- What types of climate change impacts will be addressed?
- What mechanism will be used to engage with the public?
- Under which conditions will public awareness be considered as increased?
- What are the current levels of public awareness, have these been defined?
- Finally, has a timeframe been established for when the target must be reached?



## Step 2: Make targets SMART – Mitigation targets issues – GHG related targets

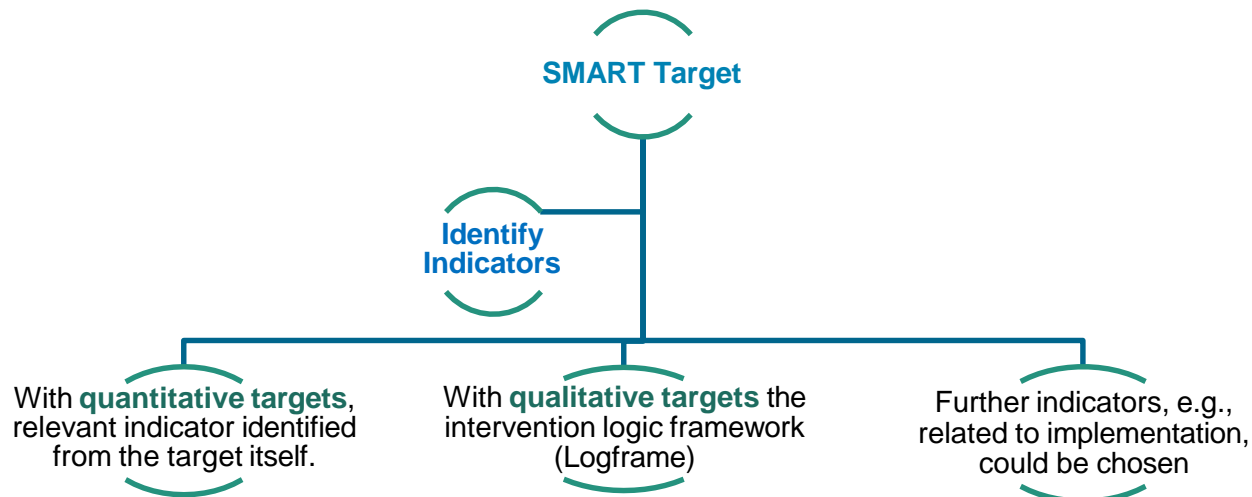
| Type of mitigation target   | Elements to consider for a SMART target  | Unit  |
|---|--|---|
| <b>Absolute emission reduction or limitation target relative to a base year</b> | <ul style="list-style-type: none"> <li>· Base year clearly agreed?</li> <li>· Gases included agreed?</li> <li>· Sectors / GHG inventory categories agreed</li> <li>· Target year agreed?</li> </ul>            | kt CO <sub>2</sub> eq   |
| <b>Emission reduction target below a BAU level</b>                              | <ul style="list-style-type: none"> <li>· As for absolute emission reduction target</li> <li>· BAU level clearly defined? Data and methods available?</li> </ul>  | %   |
| <b>Intensity target</b>   | <ul style="list-style-type: none"> <li>· As for absolute emission reduction target</li> <li>· Intensity-relevant factor and source / methodology to be used clearly defined, e.g., GDP, population?</li> </ul> | kt CO <sub>2</sub> eq / capita or GDP / etc.<br>% (if compared to BAU or base period) |

## Step 2: Make targets SMART – Mitigation targets issues – Non-GHG related target

| Type of mitigation target | Elements to consider for a SMART target  | Unit   |
|---------------------------|--|--|
| <b>Renewable Energy</b>   | <ul style="list-style-type: none"> <li>· Definition of “renewable” to be used – e.g., which sources, which technologies?</li> <li>· What does it relate to – share in total power / power + heat generated, GWh electricity generated, renewable generation capacities installed / operational?</li> </ul> | <ul style="list-style-type: none"> <li>· %</li> <li>· GWh</li> <li>· MW</li> </ul>   |
| <b>Energy Efficiency</b>  | <ul style="list-style-type: none"> <li>· Definition of “energy efficiency” to be used</li> <li>· What does the target relate to, e.g. energy efficiency improvement compared to a base year or BAU</li> <li>· Energy efficiency target level?</li> </ul>   | <ul style="list-style-type: none"> <li>· GWh</li> <li>· TJ / unit of GDP</li> </ul>  |
| <b>Forest cover</b>       | <ul style="list-style-type: none"> <li>· Is there a national forest definition?</li> <li>· Methodology to determine forest cover agreed?</li> <li>· Reference level / baseline data and methodology available?</li> </ul>  | <ul style="list-style-type: none"> <li>· Hectares or km<sup>2</sup></li> <li>· % of national territory</li> <li>· % increase compared to reference / baseline</li> </ul> |



## Step 3: Identify type of indicator suitable to track the target

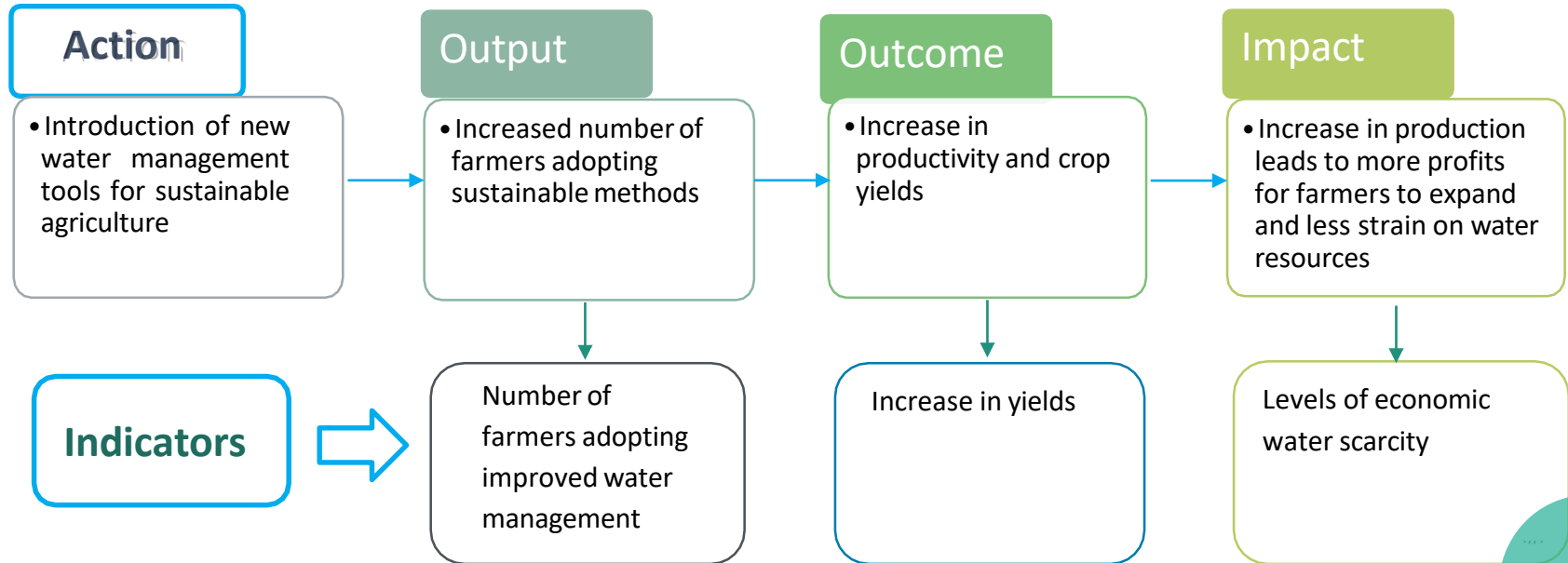


NB: The **MPGs leave the choice of indicators to the Parties**, for their NDC. The use of such implementation-related progress indicators can surely be considered beneficial at the national level.

**Parties might however decide not to include such information in their BTRs.**

## Step 3: Indicator type – Developing a logical framework

With **qualitative targets** the intervention logic framework (Logframe) provides a helpful approach to identifying suitable progress indicators (cf. section 2.1).



## Step 3: Identify type of indicator suitable to track the target – GHG target

| Type of mitigation target   | Relevant indicators  | Unit                  |
|---|--|-----------------------|
| <b>Absolute emission reduction or limitation target relative to a base year</b> | <p>GHG emissions</p> <ul style="list-style-type: none"> <li>as reported in the national GHG inventory adapted to the specific scope of the target (e.g., gases and sectors covered),</li> <li>including use of market-based mechanisms, and</li> <li>adapted to the specific timeframe of the target (e.g., where a multi-year target-period applies).</li> </ul>  | kt CO <sub>2</sub> eq |
| <b>Emission reduction target below a BAU level</b>                              | <p>Relationship (e.g., difference in %) between</p> <ul style="list-style-type: none"> <li>GHG emissions in the BAU target year / period (updated, where applicable) and</li> <li>GHG emissions as reported in the national GHG inventory adapted to the specific scope of the target (e.g., gases and sectors covered), including use of market-based mechanisms, and adapted to the specific timeframe of the target (e.g., where a multi-year target-period applies)</li> </ul> | %                     |
| <b>Peaking Target</b>   | <p>GHG emissions in all years leading to the current year,</p> <ul style="list-style-type: none"> <li>as reported in the national GHG inventory adapted to the specific scope of the target (e.g., gases and sectors covered),</li> <li>including use of market-based mechanisms</li> </ul>  | kt CO <sub>2</sub> eq |



## Step 3: Identify type of indicator suitable to track the target – Non-GHG target

| Type of mitigation target | Relevant indicators  | Unit  |
|---------------------------|--|---|
| <b>Renewable Energy</b>   | <p>Depending on specific definition of target, relevant indicators include</p> <ul style="list-style-type: none"> <li>· % of electricity generated by source</li> <li>· Total generation by source</li> <li>· Installed capacity by source</li> </ul>  | <ul style="list-style-type: none"> <li>· %</li> <li>· GWh</li> <li>· MW</li> </ul>  |
| <b>Energy Efficiency</b>  | <p>Depending on specific definition of target, relevant indicators include</p> <ul style="list-style-type: none"> <li>· Total energy demand or consumption</li> <li>· Energy intensity of the economy</li> </ul>   | <ul style="list-style-type: none"> <li>· GWh</li> <li>· TJ / unit of GDP</li> </ul>   |
| <b>Forest cover</b>       | <p>Depending on specific definition of target, relevant indicators include</p> <ul style="list-style-type: none"> <li>· Share of land covered by forest</li> <li>· Area covered by forest</li> <li>· Area restored or reforested</li> <li>· Forest stock</li> <li>· CO<sub>2</sub> sequestered per year</li> </ul> | <ul style="list-style-type: none"> <li>· %</li> <li>· ha</li> <li>· ha</li> <li>· m<sup>3</sup></li> <li>· t CO<sub>2</sub> eq</li> </ul> |



## Step 4: Identify data and methodology required to compile the indicator

For each indicator, develop a **data collection plan** :

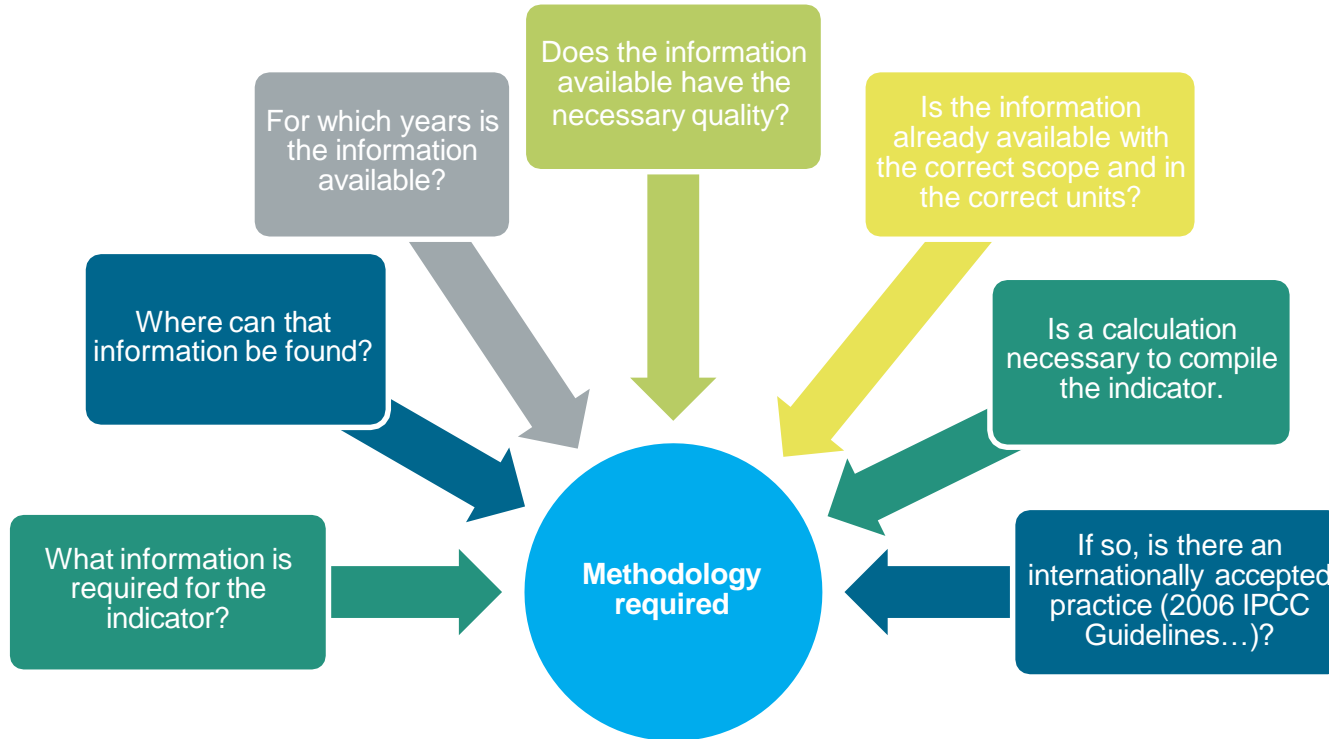
Provide a complete overview for each indicator of what is being measured:

- the baseline, the targets, data sources and methods.
- Process: It also specifies who will be collecting data, with what frequency and to whom it will be reported.



## Step 4: Identify data and methodology required

In considering the data and potential **methodology required**, the following questions might be helpful:



## Step 4: Identify data and methodology required – GHG target

| Mitigation target categories  | Relevant data sources   |
|---|---|
| <b>Absolute emission reduction or limitation target relative to a base year</b> | National GHG inventory data from the BTR under preparation  |
| <b>Emission reduction target below a BAU level</b>                              | <ul style="list-style-type: none"><li>• National GHG inventory data from the BTR under preparation</li><li>• BAU projections from the most recent NDC or from the BTR under preparation in case the BAU projections are updated over time</li></ul> |
| <b>Peaking target</b>   | National GHG inventory data from the BTR under preparation  |
| <b>Intensity target</b>   | <ul style="list-style-type: none"><li>• National GHG inventory data from the BTR under preparation</li><li>• Depending on specific target: GDP, population typically available from the national statistical offices</li></ul>                      |

## Step 4: Identify data and methodology required – Non-GHG target

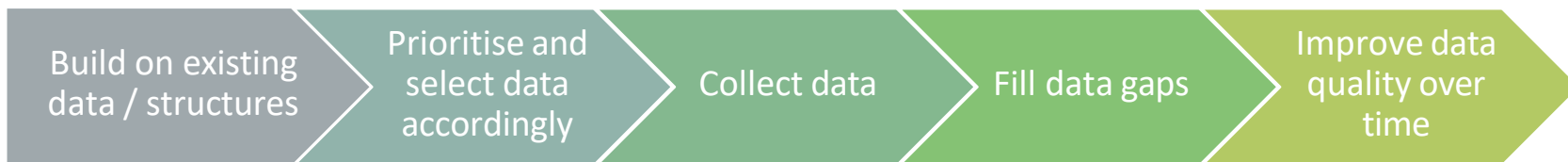
| Mitigation target categories                               | Relevant data sources   |
|--|---|
| <b>Renewable Energy</b>                                    | <p>Depending on specific target:</p> <ul style="list-style-type: none"> <li>· % of electricity generated by source and/or total generation by source from the national energy balance (if available), likely collected for the mitigation chapter of the BTR under preparation</li> <li>· Installed capacity by source: Potentially collected for the mitigation chapter of the BTR under preparation, alternatively to be collected from the Ministry responsible for power and heat generation</li> </ul>   |
| <b>Energy Efficiency</b>                                   | <ul style="list-style-type: none"> <li>· Total energy demand or consumption: from the national energy balance (if available), potentially collected for the mitigation chapter of the BTR under preparation</li> <li>· Energy intensity of the economy: Potentially available from the national statistical services.</li> </ul>  |
| <b>Forest cover</b>  | <ul style="list-style-type: none"> <li>· Depending on type of target information like: <ul style="list-style-type: none"> <li>- % of land covered by forest</li> <li>- Hectares of land covered by forest</li> <li>- Hectares of land restored or reforested</li> <li>- Volume of forest stock</li> <li>- Tonnes of CO2 stored/sequestered per year</li> </ul> </li> </ul> <p>Has likely been collected for the preparation of the LULUCF categories of the national GHG inventory and potentially for the mitigation and/or adaptation chapters.</p> |
| <b>Implementation of qualitative policies and measures</b> | <ul style="list-style-type: none"> <li>· Information likely available from the mitigation chapter of the BTR under preparation.</li> </ul>  |



## Step 4: Identify data and methodology required – Adaptation target

| Adaptation target areas                           | Relevant data sources  |
|---|--|
| <b>Water</b>                                      | Depending on specific target: <ul style="list-style-type: none"> <li>· Volume of water (m<sup>3</sup>) can be derived from sector analysis this may have been collected as part of the NAP and/or national water provider</li> </ul>   |
| <b>Ecosystems and biodiversity</b>                | Depending on specific target: <ul style="list-style-type: none"> <li>· National totals of species can be potentially sourced from Ministries of Environment, Environmental Protection Agencies and National Biodiversity Statistics</li> </ul>   |
| <b>Extreme events and disasters</b>               | Depending on specific target: <ul style="list-style-type: none"> <li>· National Statistical Offices and/ or Disaster Management Agencies</li> <li>· Severe Weather Database</li> <li>· National Hydrometeorological Institutes</li> </ul>  |
| <b>Human settlements and environmental health</b> | Depending on specific target: <ul style="list-style-type: none"> <li>· Health Statistics</li> <li>· Ministry of Health</li> <li>· International: WHO Mortality database</li> </ul>   |
| <b>Agriculture and forestry</b>                   | Depending on specific target: <ul style="list-style-type: none"> <li>· Data on agricultural production can be collected through agricultural surveys organized by the national statistical agencies</li> <li>· Geospatial data/remote sensing from the ministry or agency responsible for agriculture</li> </ul> |

# Step 5: Compiling, reporting, documenting, archiving



The assessment of available data sources in the previous step will show that many progress indicators can be compiled with data already available from BTRs and NCs.

The timing – when such data, becomes available – will be important to consider for the overall BTR compilation process.

Where additional data needs to be collected, assess whether such data collection can be integrated into existing data collection processes or can be built up together with data collection processes which need to be established for BTR reporting.

## Step 5: Compiling, reporting, documenting, archiving – Data gaps

| Type of data gap   | What to do  | What to report in the BTR  |
|--|---|--|
| <b>Relevant input data not available at all</b>  | <p>Identify</p> <ul style="list-style-type: none"> <li>activities enabling the collection of relevant data (e.g., research, studies, new statistics)</li> <li>entities responsible for these activities</li> <li>necessary preconditions, e.g., budget / staff, legal framework, MoUs, etc.</li> </ul>  | <p>Report</p> <ul style="list-style-type: none"> <li><b>the fact</b> that the indicator data is currently not available and why that is the case</li> <li><b>action taken to make the indicator data available</b> in the future</li> <li><b>When</b> you expect to be able to report on the indicator</li> <li>What <b>international support</b> is required to do so (if applicable)</li> </ul>  |
| <b>Relevant input data not available for all years, all sectors, all regions, etc.</b>         | <ul style="list-style-type: none"> <li>Where possible, use <b>gap-filling approaches</b> (e.g., overlap, surrogate data, interpolation, and trend extrapolation) <b>to estimate</b> the indicator value for the full scope / all relevant years</li> <li>Use approaches suggested under “relevant input data not available at all” to collect missing data in the future</li> </ul> | <p>Report,</p> <ul style="list-style-type: none"> <li>what information was not available / for which years?</li> <li>What gap filling approaches have been deployed?</li> <li>actions taken to make indicator data available in the future</li> <li>When would you expect to be able to report the indicator?</li> <li>What international support is required to do so (if applicable)?</li> </ul> |
| <b>Data is not available as a relevant mitigation or adaptation action has not started yet</b> | <ul style="list-style-type: none"> <li>Put data collection and compilation processes in place before the action starts</li> </ul>   | <p>Report</p> <ul style="list-style-type: none"> <li>The fact that the <b>implementation has not yet started</b> and</li> <li><b>When it is planned</b> to start?</li> </ul>   |

# Summary: Step by step approach- Identifying and compiling NDC indicators

## Step 1: Identify and assess NDC targets

- What to do: Identify mitigation and adaptation targets in NDC. List targets in a tabular format with relevant details

## Step 2: Make targets SMART

- What to do: Clarify scope, units, reference/baseline levels. Involve stakeholders responsible for implementing measures

## Step 3: Identify type of indicator suitable to track the target

- What to do: Identify indicators for quantitative and qualitative targets. Implementation-related progress indicators beneficial at the national level. Parties might not include such information in their BTRs

## Step 4: Identify data and methodology required

- Identifying data and methodology. Determine what information is required, its availability, and quality. Check if adjustments to scope or units are necessary. Identify if calculations are needed and what methodologies to use

## Step 5: Compiling, reporting, documenting, archiving

- Compiling and reporting. Assess integration of data collection with existing processes. Plan long-term improvements for data quality and availability.
- Document all relevant information for future compilation. Learn from national GHG inventory and statistical offices' processes



Welcome to the  
Climate  
Transparency  
Platform

LEARN MORE



# Thank you for your attention!



**CBIT-GSP**  
**Asia Network Coordinator**

**Jaypalsinh CHAUDHAN**  
[jaypalsinh.chaudhan@un.org](mailto:jaypalsinh.chaudhan@un.org)



**CBIT-GSP**  
**Transparency Adviser**

**Khetsiwe KHUMALO**  
[khetsiwe.khumalo@un.org](mailto:khetsiwe.khumalo@un.org)

Executed by:



Funded by:



Implemented by:



[www.climate-transparency-platform.org](http://www.climate-transparency-platform.org)

