

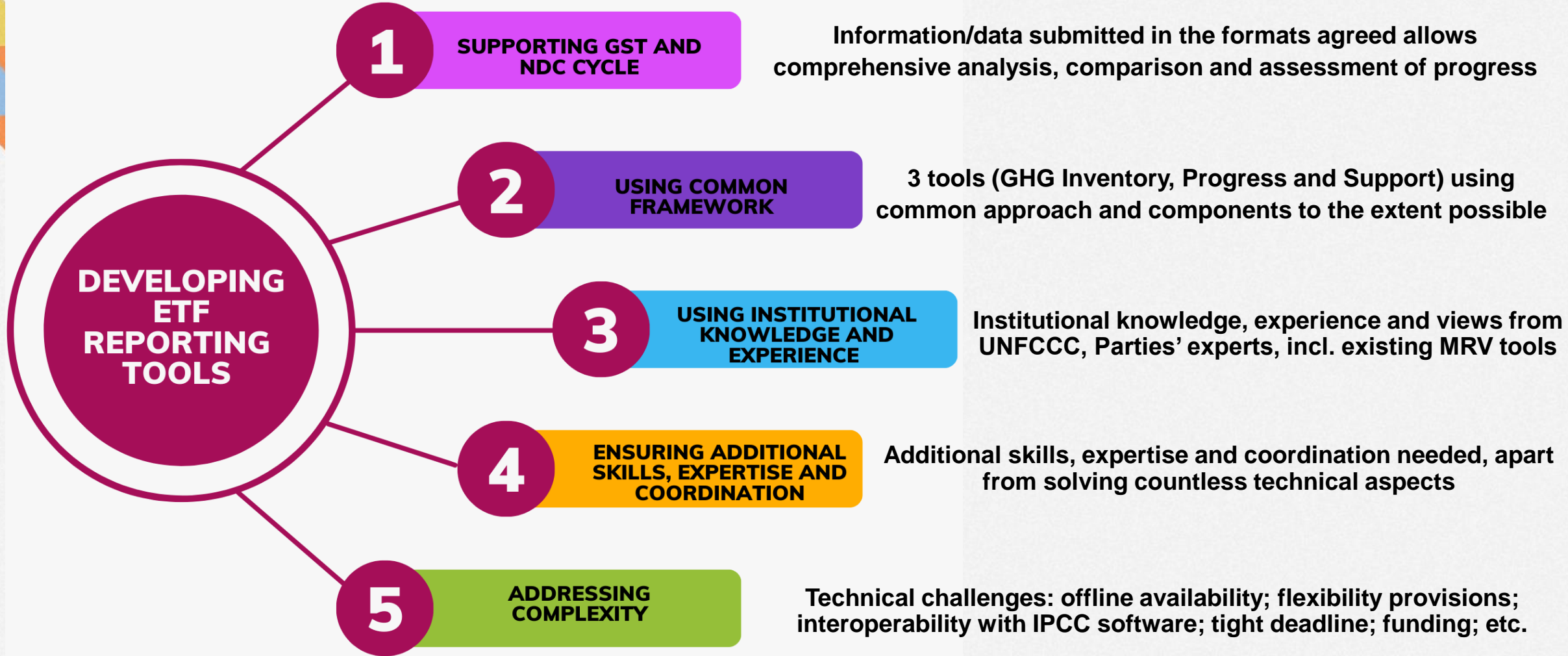
Electronic reporting tools



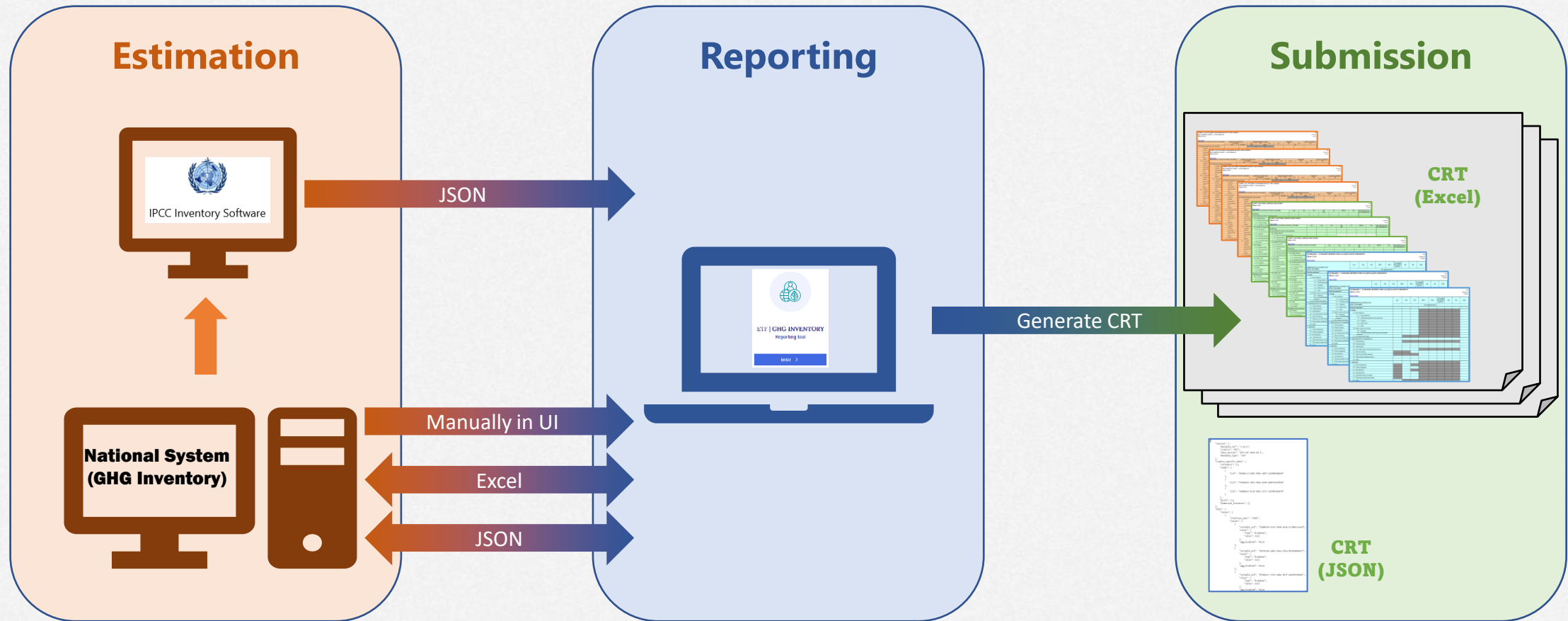
United Nations
Climate Change Secretariat



Guiding principles



Interoperability with IPCC and other systems

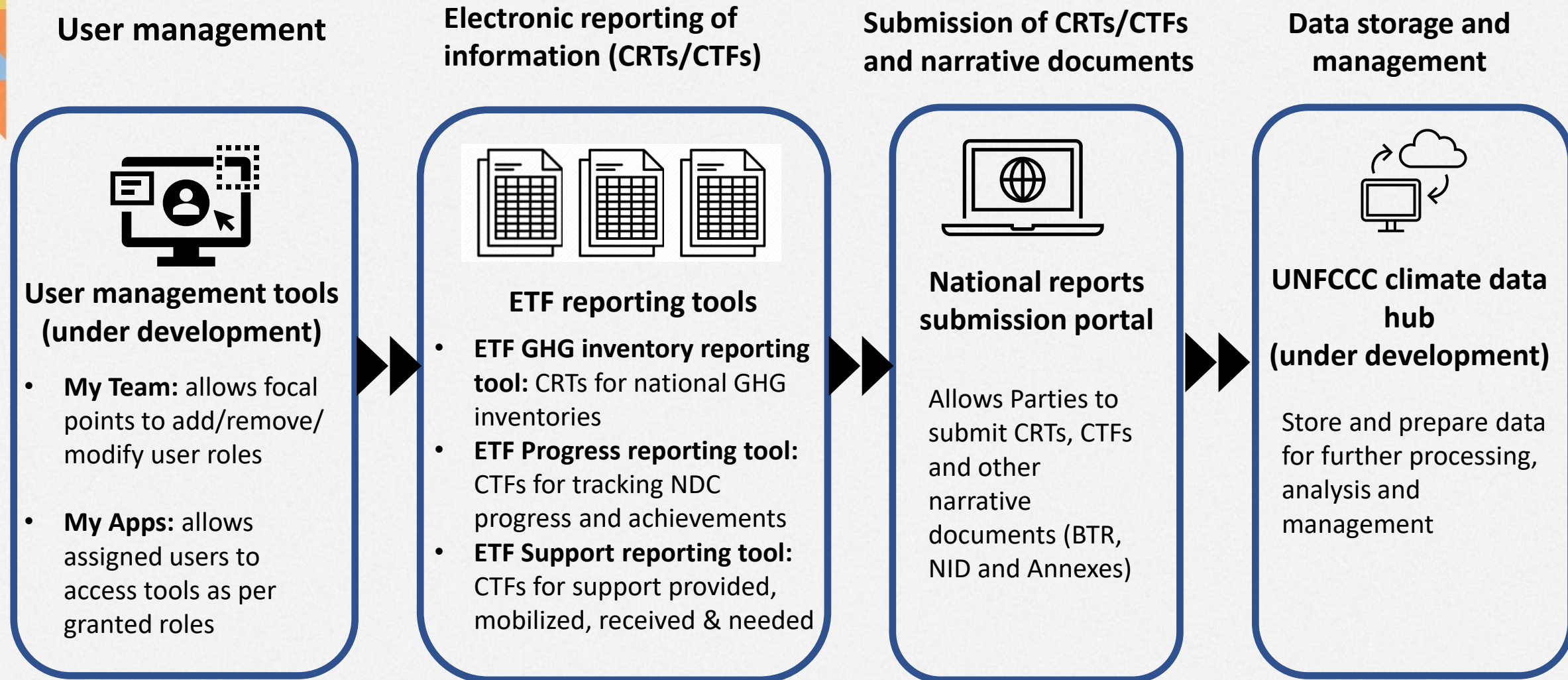


Complexity

- **75 tables (49, 13, 13) ~ 90 worksheets**
 - **GHG Inventory** - entire time series (e.g. for 2024 submission, 32 years (1990–2022)) containing 60 worksheets/year = 2000 worksheets
 - Some tables e.g. in IPPU [Table2(II).B-Hs1] and LULUCF [Table4(II)] could have **more than 1000 rows of data**
 - PaMs table and Support tables could have **hundreds of entries**
 - Up to **1 million data points** covering all 3 reporting tools for one Party
- **+1300 complex technical and business user stories**
- Interoperability with **IPCC software** considering that the category trees in the CRT and IPCC software are not identical
- New-branded platform built from scratch using best practices
- Offline mode, flexibility provisions, multiuser capability



Framework for reporting under the ETF



User Interface

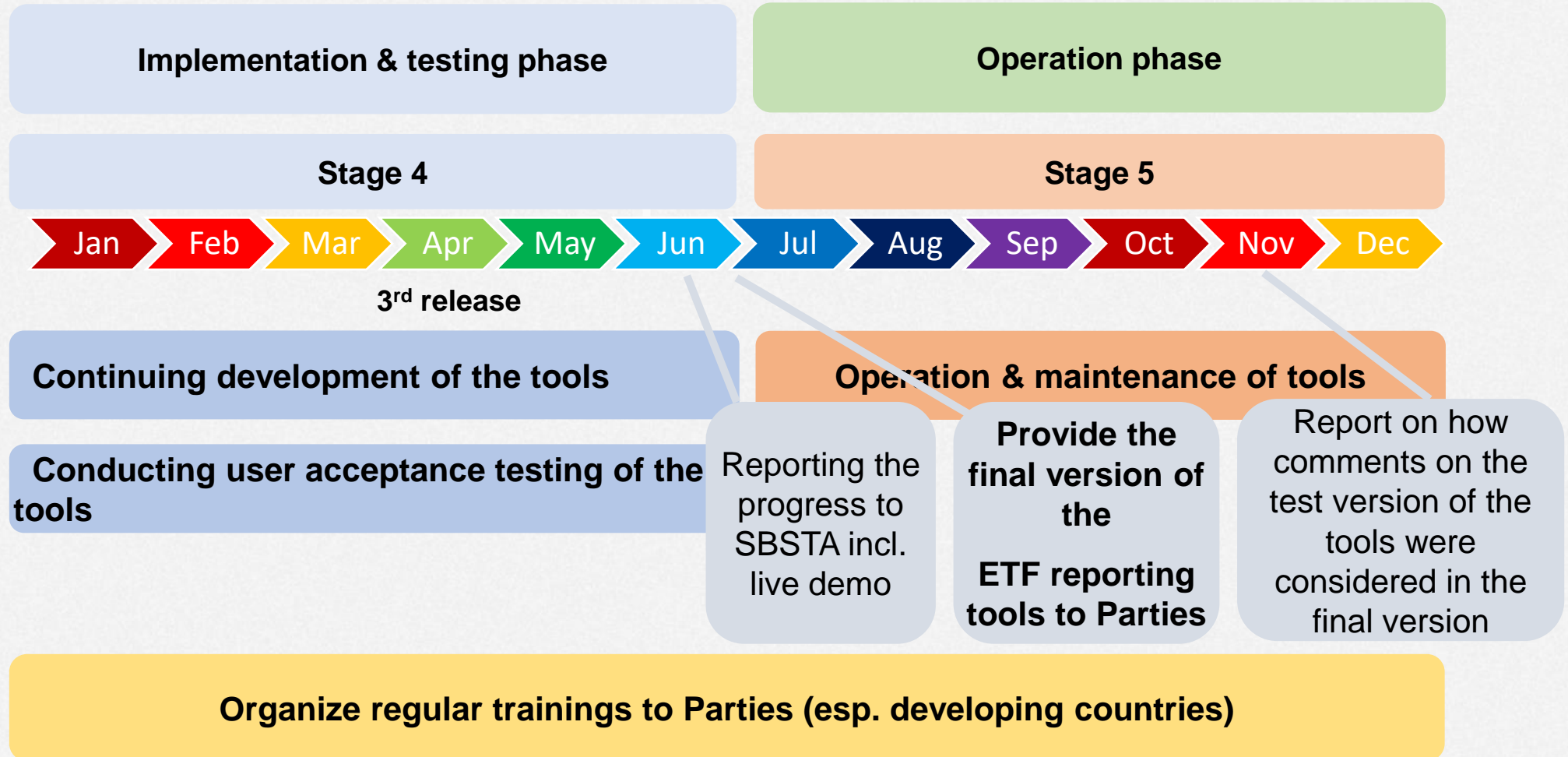
The screenshot shows a web browser window with the URL <https://apps.unfccc.int/home>. The browser's address bar includes navigation icons (back, forward, refresh, home) and security symbols (lock, shield). The page header is a dark blue bar with the text "ETF | TOOLS" and a copyright symbol. The main content area is white and features the instruction "Please select one of the ETF reporting tools". Below this instruction are three light blue rounded rectangular cards. Each card contains a circular icon: the first shows a globe with a leaf, the second shows a hand holding a plant, and the third shows a stack of coins with a plant. Below each icon is the tool name and "Reporting tool", and at the bottom of each card is a blue button with the text "Enter >".

Please select one of the ETF reporting tools

- ETF | GHG INVENTORY**
Reporting tool
Enter >
- ETF | PROGRESS**
Reporting tool
Enter >
- ETF | SUPPORT**
Reporting tool
Enter >

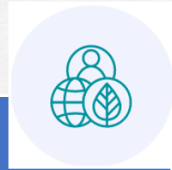
Secretariat will NOT have access to any of the Party spaces/data

Timeline - 2024



Overall scope of the final version (June 2024)

GHG inventory



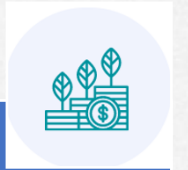
- All sectors, data entry grids
- All flexibility provisions and version settings
- Key category analysis
- Interoperability with IPCC software

Progress



- All data entry grids
- All flexibility provisions and version settings
- Interconnection with CRT
- Bulk import tool for Policies and Measures

Support



- All data entry grids
- All version settings
- Detailed explanation of each decision step
- Bulk import tool for projects/activities for all tables

- Generating reporting tables
- Importing and exporting (Excel and JSON)
- Working in offline mode
- Data validation in the data entry grids
- Providing comments/custom footnotes/doc boxes

ETF Reporting Tools to be released at the end of June allow Parties to compile data and generate reporting tables for submission

Planned trainings, live demo and support (help desk)

- **CBIT/PATPA workshops on GHG inventory and NDC tracking for Anglophone/Francophone Networks: Kigali, Rwanda, 25-28 June**
- **NIES Workshop on GHG Inventories in Asia (WGIA 21): Putrajaya, Malaysia, 10-11 July**
- **CBIT/PATPA workshop on GHG inventory for Spanish LAC and Anglophone Caribbean: Bogota, Colombia, 23-25 July**
- **UNFCCC/IPCC Inventory Software & ETF Tools Demonstration Workshop: Baku, Azerbaijan, 4-6 September**

ETF Reporting Tools Help Page & Support Team:

- User Manuals and Training Materials
 - Technical Documentation
 - Frequently Asked Questions
 - Report Issues and Incidents directly
-
- **SB60 – ad-hoc availability to support users**

- **Hands-on trainings with RCC staff and partners in the respective regions**
- **Transparency dedicated space during COP29**



Enhancements to be developed (after June 2024)

- Submission lifecycle (direct from tools)
- Multilingual support
- QC on the submission
- Completeness check with traffic lights system
- User preferences & data visualization
- Tooltips/info buttons
- Recalculation table and Flex_Summary table (GHG Inventory)
- Improvements to address feedback received from Parties



Next steps

- National Focal Point must complete form sent by Secretariat ASAP nominating a **ETF Focal Point** and **ETF Focal Point Alternate**.
- The ETF Focal Point will be responsible for managing all the users who will be using the reporting tools on behalf of the country. In addition, the ETF Focal Point or its Alternate will be able to add users and assign roles for all three tools.



The secretariat will NOT have access to any Party space in the reporting tools and will not be able to add or remove users.

Thank you

Tools.Support@unfccc.int

Let's work

#Together4Transparency!



United Nations
Climate Change Secretariat

#Together4Transparency





Thank you for your attention

Tools.Support@unfccc.int