

Rwanda Experience – National GHG Inventory Arrangements

Pearl Nkusi
Rwanda Environment Management Authority

RWANDA



- **Area:** 26, 338sqkm
- **Population:** About 13.2 million people (NISR, 2022 Census)
- **Economy:** Agricultural based
- **Annual GDP Growth:** 8.2 % (2023)
- **Climate Situation:** Tropical Climate moderated by hilly topography. Average temperatures rising, increasing extreme events

National Environment and Climate Change Action

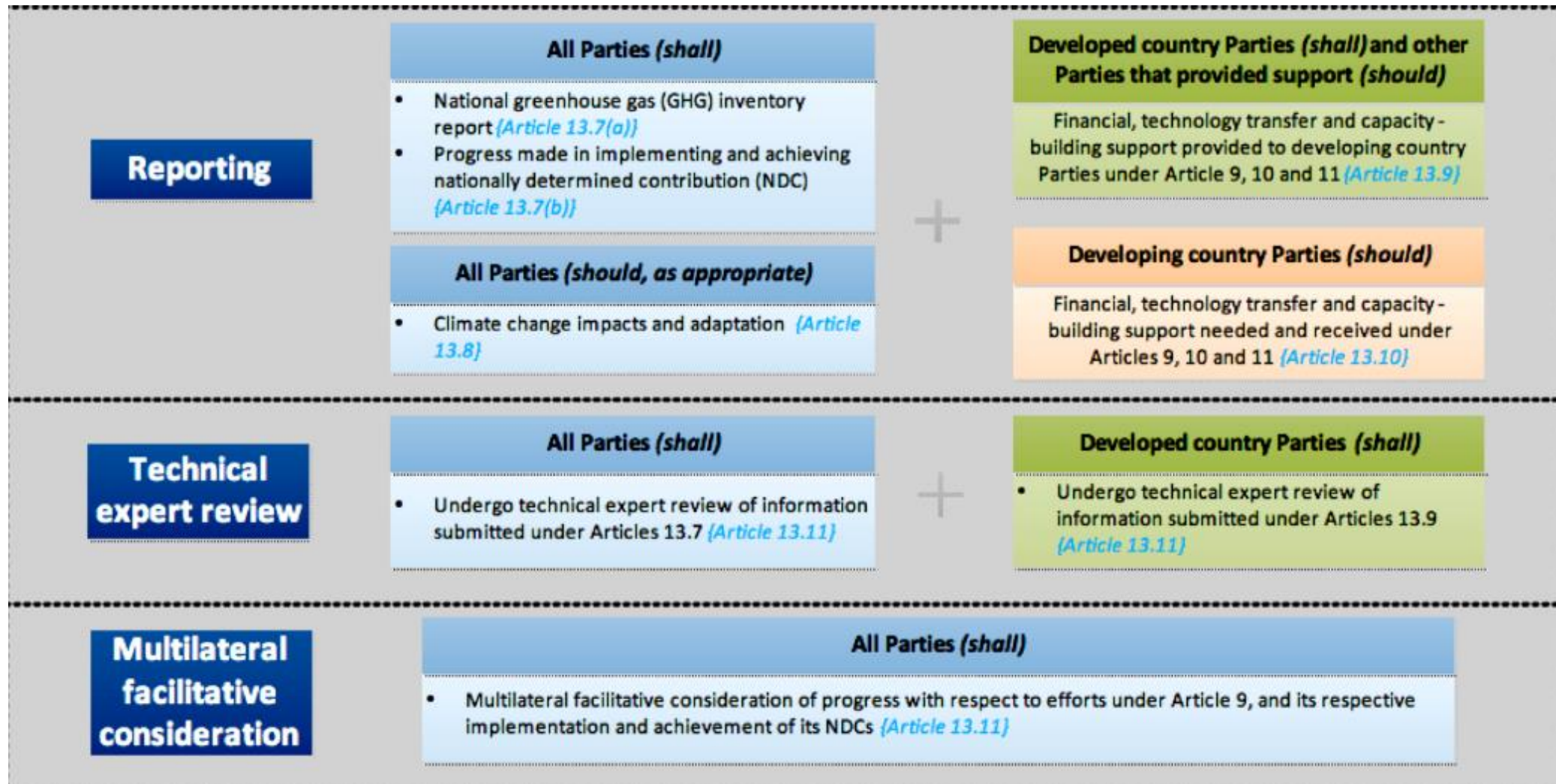
- 2022 Green Growth and Climate Resilience Strategy (GGCRS)
- 2019 Environment and Climate Change Policy
- 2020 Revised NDC and its MRV framework

Institutional arrangements for UNFCCC reporting

1. Ministry of Environment - Institution in charge of developing policies and programmes related to environment and climate change; chairs Environment and Natural Resources Sector Working Group (SWG)

2. REMA:
 - The regulatory agency tasked to coordinate the implementation of CC policies and programmes; chairs the E & CC Thematic Working Group (TWG)
 - Preparation of NC and BUR through Environment Analytics and Lake Kivu Monitoring and the Single Project Implementation Unit – Climate Change Program

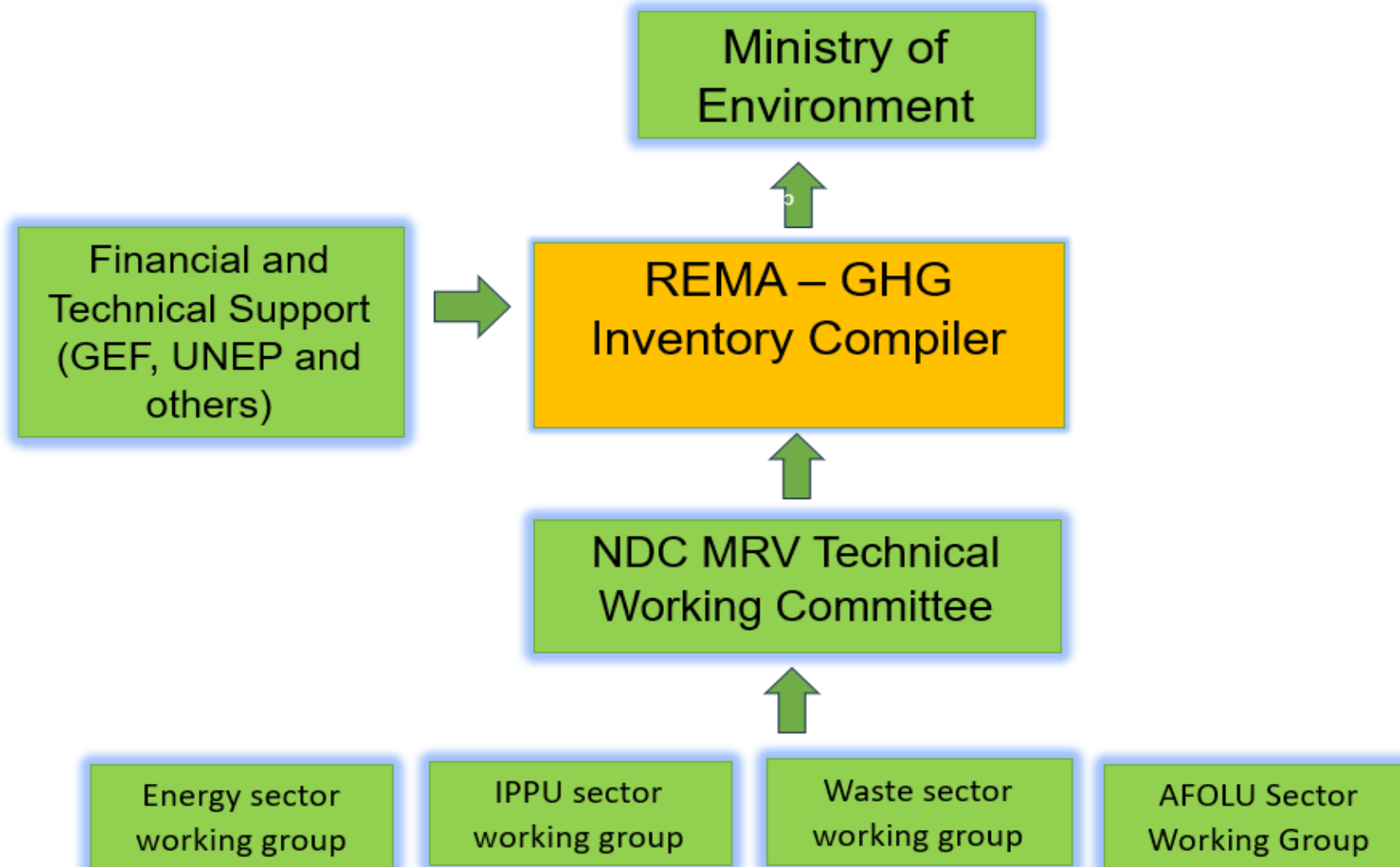
Enhanced Transparency Framework (ETF) under the Paris Agreement



Transparency Framework implementation in Rwanda

- A National technical working committee responsible to coordinate national institutions implementing NDC actions was put in place by REMA. This team is in charge of assessing NDC progress, conducting technical reviews and providing all necessary technical support to the BTR process
- MRV data and information is managed within existing Results Based M&E system of the environment and climate change sector. Data and information access to be facilitated by REMA and MoE while NISR to facilitate development of MRV data related protocols/procedures
- Ministry of Finance and Economic Planning and Rwanda Green Fund to coordinate tracking of climate finance and climate finance data management

National Inventory System/Institutional Arrangements



Institutional Arrangements ctd..

GHG Inventory Compiler – REMA

- Environment Analytics Division with 2 dedicated GHG Inventory team personnel
- Climate Change Program with staff that manages reporting projects funded by GEF through UN Environment
- 3 Sector Leads (National Consultants from the University of Rwanda)
- International Consultants for Quality Assurance and any other external support

Institutional Arrangements ctd..

MRV Technical Working Committee

- Upto 32 members from sector institutions. They include
- MINAGRI, RMB, MININFRA, RTDA, MINICOM, NLA, RFA, RWRB, RHA, RSB, EDCL, Rwanda Green Fund, NIRDA, MoE, Meteo Rwanda, ARCOS, University of Rwanda
- Roles: GHG Inventory data providers, data on NDC indicators, among others

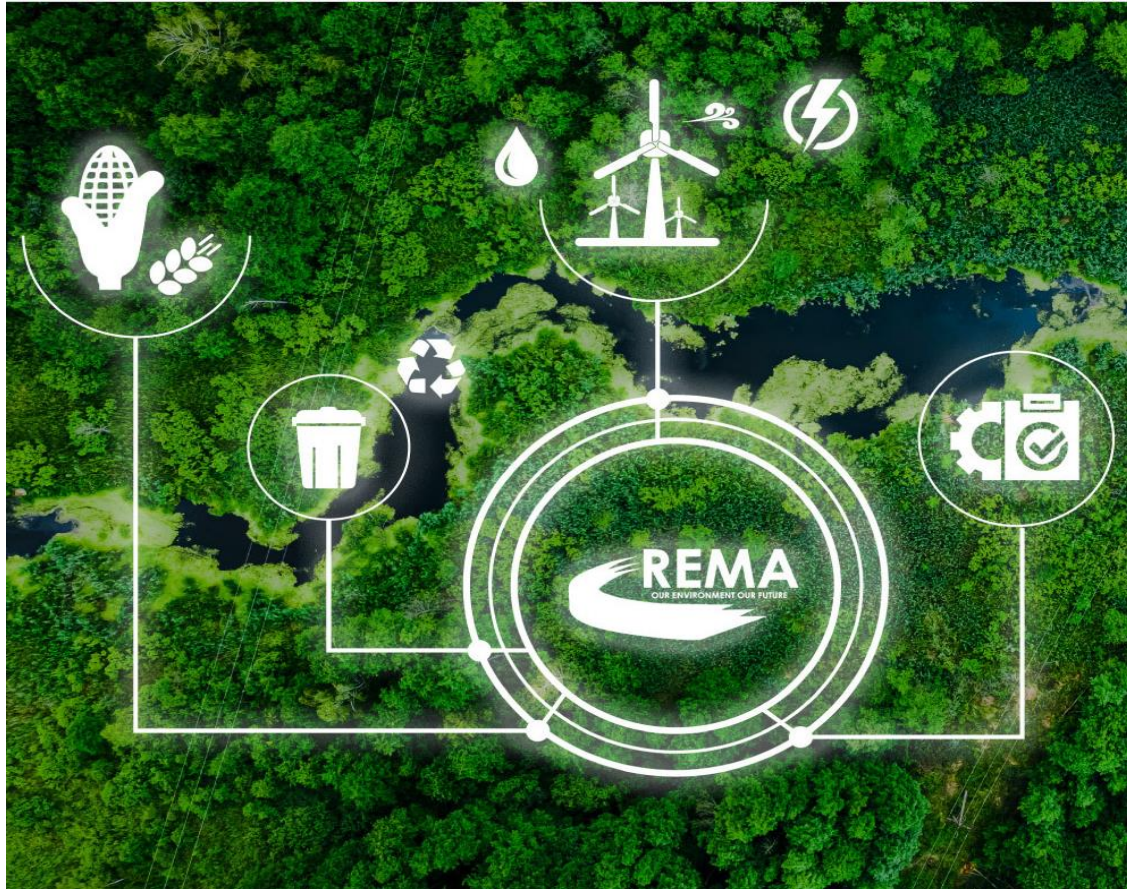
Preparation of institutions for ETF Implementation - Development of country specific emission factors

- Through science based research funded by Rwanda Capacity Building Initiative for Transparency (CBIT) project, 5 papers have been submitted to peer reviewed journals covering emission factors and key parameters in key category sectors:
 - ✓ Waste generation per capita
 - ✓ EF for biomass as a cooking fuel
 - ✓ EF and methodology for estimating GHG emissions for methane gas to power generation in Rwanda
 - ✓ EF for clinker
 - ✓ Ef on Estimated daily feed intake, volatile solids and nitrogen excretion in Rwanda

These are going to contribute to more accuracy of emission estimations from biomass cooking, cement production, municipal solid waste, livestock and methane extraction

Preparation of institutions for ETF Implementation – Development of GHG Activity Data Platform


- Still under the support of the Rwanda CBIT project, an integrated GHG activity data platform has been developed to ease activity data sharing and foster transparency.




Sign In

To Access Our Dashboard.

Email Address

 This connection is not secure. Logins entered here could be compromised. [Learn More](#)

 admin@bewsys.com
From this website

[Manage Passwords](#)

SIGN IN



Don't have an account yet? [Sign up here](#)

Preparation of institutions for ETF Implementation – Evidence Based Climate Reporting Initiative (ECRI)



The CBIT Rwanda project also implemented a 9 months training program titled Evidence Based Climate Reporting Initiative (ECRI) centered around training more than 45 sector experts tools for GHG Inventory Projections, Climate Modelling for Vulnerability Assessments and Advanced Microsoft Excel for data analysis



Thank you!