



**CBIT-GSP**  
CLIMATE TRANSPARENCY



**UN** environment  
programme

**UN** environment  
programme

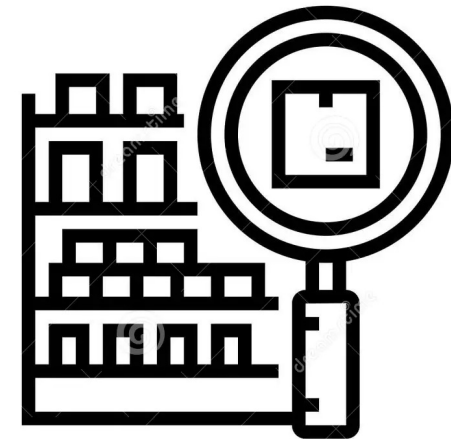
copenhagen  
climate centre

# Training on 2006 IPCC Guidelines for preparing National GHG Inventory: Energy and Waste Sector

**Present By:**

**Eng. H. M. Buddika Hemashantha**

**International MRV Transparency  
Advisor to CBIT-GSP**



## UNFCCC ETF Reporting Tool

*Organized by the Capacity Building Initiative for  
Transparency  
Global Support Programme (CBIT-GSP)*

**ipcc**  
INTERGOVERNMENTAL PANEL ON climate change



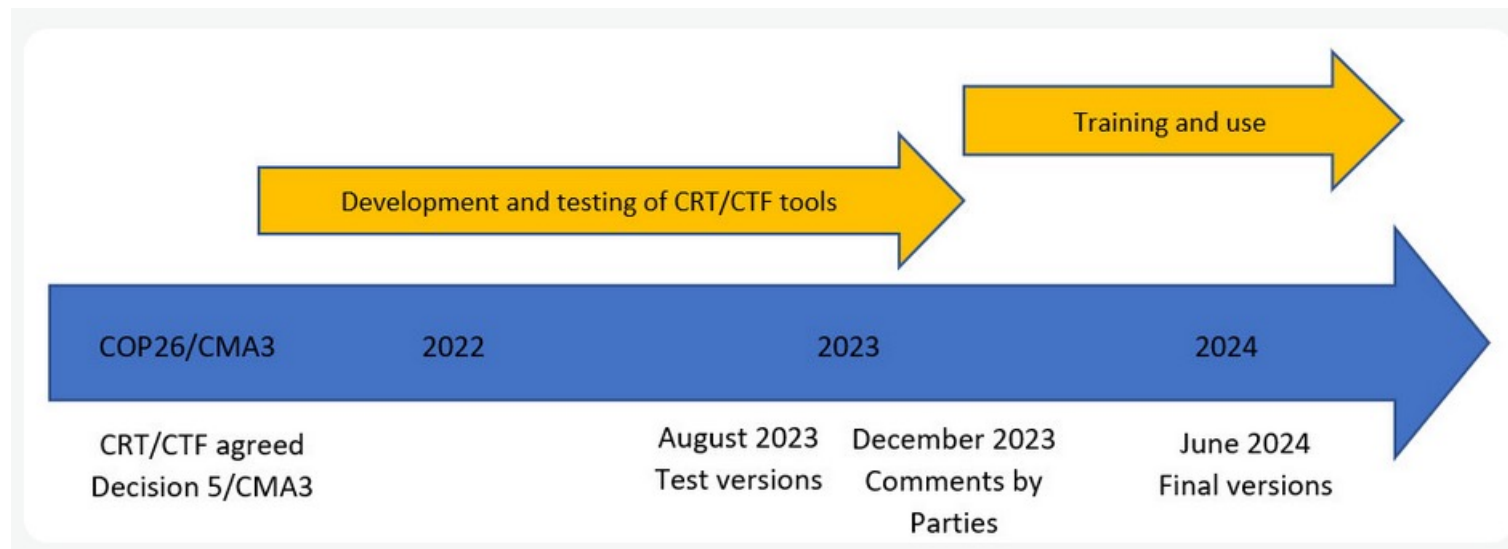


# Contents

1. Introduction to the UNFCCC ETF Reporting Tool
2. Interoperability with IPCC Software
3. Request access to the ETF Reporting tools

# Introduction

Following the mandate from decision 5/CMA.3, the secretariat is developing the ETF reporting tools for use by Parties for reporting the information as required by the modalities, procedures and guidelines for the enhanced transparency framework (decision 18/CMA.1)



Milestones in the process of development of the reporting tools

# ETF Reporting Tools



## GHG INVENTORY REPORTING TOOL

- Generates the common reporting tables (CRTs) for the electronic reporting of the information in the national inventory reports (NIRs) of anthropogenic emissions by sources and removals by sinks of GHG as contained in annex I to decision 5/CMA.3



## PROGRESS REPORTING TOOL

- Generates the common tabular formats (CTFs) for the electronic reporting of the information necessary to track progress made in implementing and achieving nationally determined contributions (NDCs) under Article 4 of the Paris Agreement, as contained in Annex II to decision 5.CMA.3



## SUPPORT REPORTING TOOL

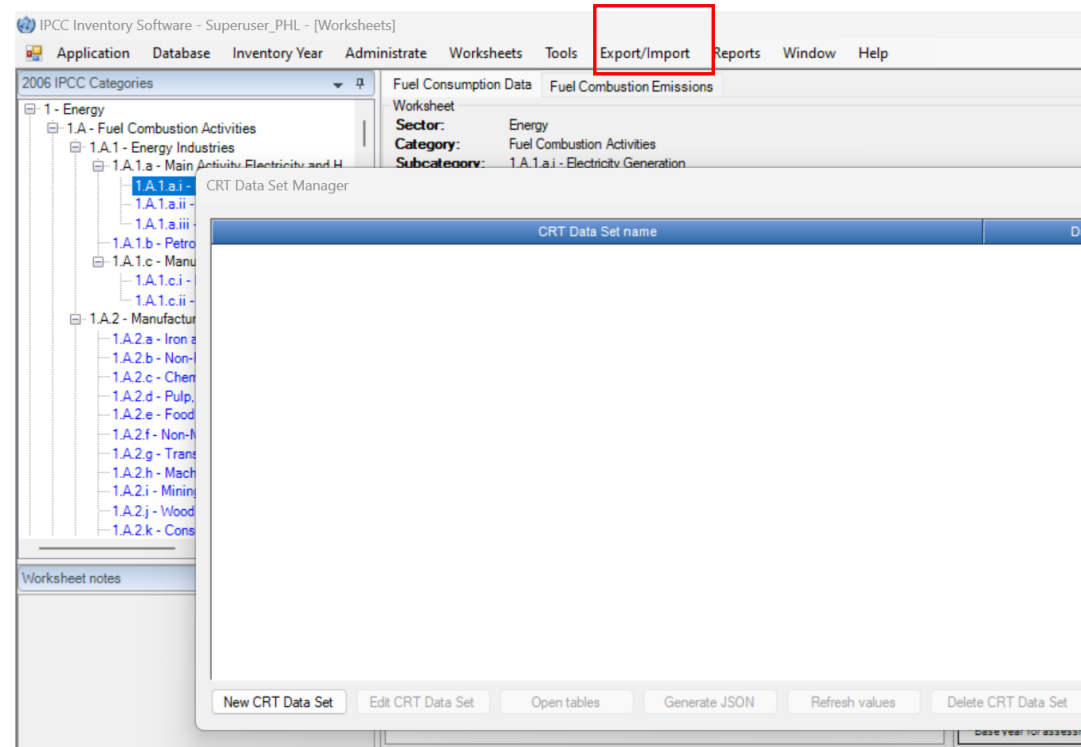
- Generates the common tabular formats (CTFs) for the electronic reporting of the information on financial, technology development and transfer and capacity-building (FTC) support provided and mobilized, as well as support needed and received, under Articles 9–11 of the Paris Agreement, as contained in annex III to the decision 5/CMA.3

# Interoperability with IPCC Software



The interoperability with the IPCC Software allows the transfer of the data from the IPCC software to the GHG Inventory Reporting Tool. After estimating the national GHG inventory Parties can export the JSON data exchange file from IPCC software and import it to the GHG inventory reporting tool.

- Generation and Export of JSON files are available in the **IPCC software version 2.871 or later**.
- In the test version, JSON import can be done at the **sector level only**.
- In the test version, JSON file generation has been implemented for the **Energy and Waste sector** only. More sectors will follow in future releases.



- In the IPCC Software
1. After compiling your GHG inventory, Click “Export/Import” > “Export” > “UNFCCC CRT”
  2. Click “Generate JSON” and a JSON file is generated.
  3. Save the JSON file to your computer and it can now be imported to the GHG Inventory reporting tool.

# Interoperability with IPCC Software



The screenshot displays the IPCC software interface with several overlapping windows. The background window shows a tree view of IPCC categories, with 'Energy' selected. Overlaid on this is the 'New CRT Data Set' dialog box, which has 'Energy' entered in the 'Name' field and '2000' in the 'Years' list. Below this is the 'Select sector and years' dialog box, showing 'Energy' selected in the 'Sector' dropdown and '2000' checked in the 'Years' list. At the bottom of the interface, three buttons are highlighted with red boxes: 'New CRT Data Set', 'Save', and 'Generate JSON'.

PC Categories

Fuel Consumption Data Fuel Combustion Emissions

Worksheet

Sector: Energy

CRT Data Set Manager

New CRT Data Set

Name: Energy

Years:

Year	Select
2000	<input checked="" type="checkbox"/>

CRT Data Set name

CRT Data Set name	Date
Energy2000_20240313	13.03.2024 16:00

Select sector and years

Sector: Energy

Years:

<input checked="" type="checkbox"/> 2000
--

Select all Unselect all Invert selection OK

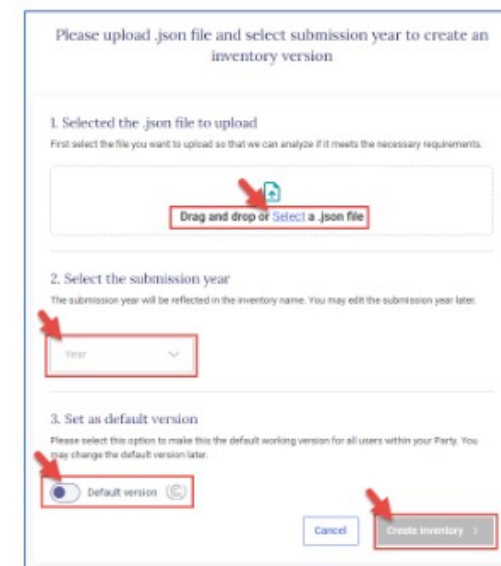
New CRT Data Set Edit CRT Data Set Save

Open tables Generate JSON Refresh values Delete CRT Data Set

# Upload JSON files generated from IPCC Software to UNFCCC Reporting Tool

## In the GHG Inventory reporting tool

1. In the “Inventories” tab, click “+ Create version”
2. Click “Select” in the “Upload a file” tile
3. Click “Select” and select the JSON file exported from the IPCC software. You can also drag and drop the file in drag and drop area.
4. Specify “Submission year”, “Default version” and click “Create inventory”. The inventory will be created.
5. Specify applicable version settings and click “Go to data entry” to start working on your inventory.
6. The data imported from the IPCC software will already be populated in the data entry grids.
7. You can modify the data, if needed.



Reference- [https://unfccc.int/sites/default/files/resource/ETF\\_GHGI-RT\\_HandsOnTraining\\_LACCW\\_v1.pdf](https://unfccc.int/sites/default/files/resource/ETF_GHGI-RT_HandsOnTraining_LACCW_v1.pdf)

# How to request access to the ETF Reporting tools?



To request access for testing the ETF Reporting Tools

- Request your National Focal Point to nominate you for accessing ETF Reporting Tools
- UNFCCC Secretariat will provide access to the users
- Users can start testing the ETF Reporting Tools

Following the mandate from decision 5/CMA.3, the secretariat has released the test version of the tool at

<https://apps.unfccc.int/home>

Reference- [https://unfccc.int/sites/default/files/resource/ETF\\_GHGI-RT\\_HandsOnTraining\\_LACCW\\_v1.pdf](https://unfccc.int/sites/default/files/resource/ETF_GHGI-RT_HandsOnTraining_LACCW_v1.pdf)





**Eng. H.M. Buddika Hemashantha**

**International MRV Transparency Advisor to CBIT  
GSP**

**+44 7359 23 7074, +94 770 320 110**

**[buddika@climatesi.com](mailto:buddika@climatesi.com)**