

Hands-on training workshop on enhancing institutional arrangements and effective implementation of the Enhanced Transparency Framework

23 – 25 January 2024

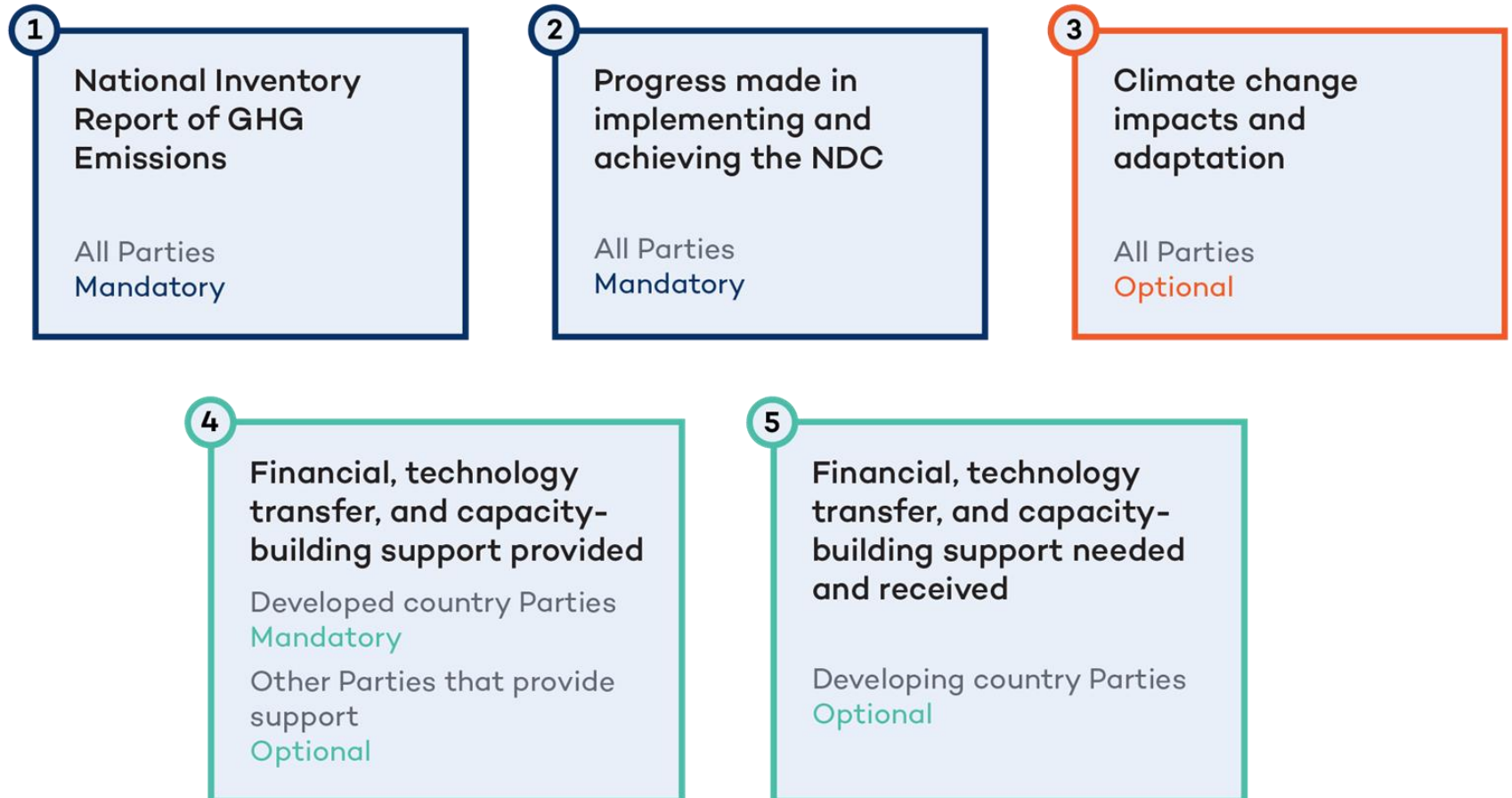
Maldives

**AN OVERVIEW OF THE COMMON TABULAR FORMATS
FOR REPORTING**

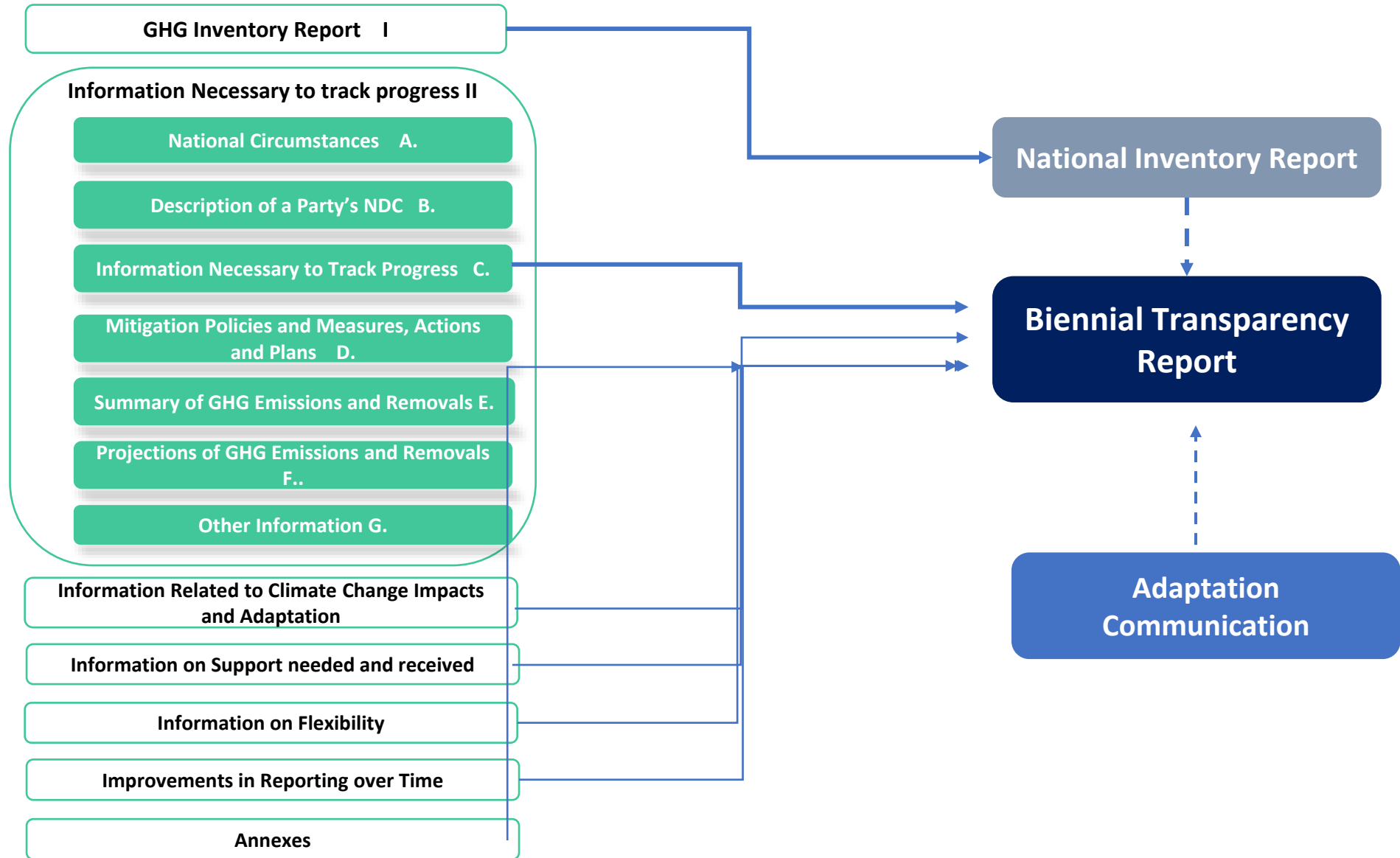
Khetsiwe Khumalo
Advisor - Climate Transparency
UNEP CCC

What is the BTR?

The BTR is the **reporting vehicle for the ETF**



BTR Outline



Chapter 3 MPG: Information necessary to track progress made in implementing and achieving nationally determined contributions under Article 4 of the Paris Agreement

A. National circumstances and institutional arrangements

- The aim is to paint a comprehensive picture of a country's unique situation that might impact their progress towards NDCs. This includes understanding the institutional framework that supports climate change initiatives.

A. Description of a Party's NDC under Article 4 of the Paris Agreement, including updates

- This section aims to provide a detailed account of a country's NDC, including all its parameters and any updates since the last report. The intent is to ensure a clear understanding of the country's climate commitments and any changes therein.

C. Information necessary to track progress

- The goal of this section is to outline how a country tracks its progress towards meeting its NDCs. It involves detailing the specific indicators used and sharing the most recent data related to these indicators.

D. Mitigation Policies, Actions, and Plans

- This part aims to present a detailed account of the country's efforts to mitigate climate change, including policies, actions, and plans. The goal is to highlight the measures being taken to reduce GHG emissions and the effectiveness of these measures.

E. Summary of GHG Emissions and Removals

- This section's goal is to provide a succinct summary of a country's GHG emissions and removals. This information is especially important for countries submitting a stand-alone national inventory report.

F. Projections of GHG Emissions and Removals

- The goal here is to present projections of a country's future GHG emissions and removals, based on current mitigation policies and measures. This helps to identify the potential future trajectory of a country's GHG emissions.

G. Other Information

- This section provides a platform for countries to share any additional relevant information that helps understand their progress in implementing and achieving their NDCs. This could include any unique initiatives, challenges, or plans that are relevant to their NDC progress.

Common Tabular Formats

What are CTFs?

- Set of standardized tables that provide a structured way to report information
- Designed to ensure comparability and transparency while also allowing for flexibility in recognition of different national

Why use CTFs

- To track progress made in implementing and achieving NDCs
- Easier to compare and analyze data across countries and sectors



Common tabular formats for the electronic reporting of the information necessary to track progress made in implementing and achieving nationally determined contributions under Article 4 of the Paris Agreement

Decision 5/CMA.3
Guidance for operationalizing the modalities, procedures and guidelines for the enhanced transparency framework referred to in Article 13 of the Paris Agreement

Annex II*

Common tabular formats for the electronic reporting of the information necessary to track progress made in implementing and achieving nationally determined contributions under Article 4 of the Paris Agreement

1. Structured summary: Description of selected indicators

<i>Indicator(s) selected to track progress^a</i>	<i>Description</i>
{Indicator}	Information for the reference point(s), level(s), baseline(s), base year(s) or starting point(s), as appropriate ^b Updates in accordance with any recalculation of the GHG inventory, as appropriate ^b Relation to NDC ^c

Notes: (1) Pursuant to para. 79 of the MPGs, each Party shall report the information referred to in paras. 65–78 of the MPGs in a narrative and common tabular format, as applicable. (2) A Party may amend the reporting format (e.g. Excel file) to remove specific rows in this table if the information to be provided in those rows is not applicable to the Party's NDC under Article 4 of the Paris Agreement, in accordance with the MPGs. (3) The Party could add rows for each additional selected indicator and related information.

^a Each Party shall identify the indicator(s) that it has selected to track progress of its NDC (para. 65 of the MPGs).

^b Each Party shall provide the information for each selected indicator for the reference point(s), level(s), baseline(s), base year(s) or starting point(s), and shall update the information in accordance with any recalculation of the GHG inventory, as appropriate (para. 67 of the MPGs).

^c Each Party shall describe for each indicator identified how it is related to its NDC (para. 76(a) of the MPGs).

Custom footnotes:

Documentation box:

Common Tabular Formats - Tables

MPG Section III	Related Tables from the Common tabular formats (CTF)	Reporting requirement Paragraph of the MPGs	Flexibility, for Parties that need flexibility in the light of their capacities (self-determined)
B. Description of a Party's NDC	Appendix: Description of a Party's NDC	64	
C: . Information necessary to track progress made in implementing and achieving its nationally determined contribution under Article 4 of the Paris Agreement	Table 1: Structured summary: Description of selected indicators	65	Parties can have their latest reporting year as three years prior to the submission of their national inventory report
	Table 2. Structured summary: Definitions needed to understand NDC	73	
	Table 3. Structured summary: Methodologies and accounting approaches – consistency with Article 4, paragraphs 13 and 14 of the Paris Agreement and with decision 4/CMA.1	71-77d	
	Table 4. Structured summary: Tracking progress made in implementing and achieving the NDC under Article 4 of the Paris Agreement	77a -77dii	
	Table 12. Information necessary to track progress on the implementation and achievement of the domestic policies and measures implemented to address the social and economic consequences of response measures	78	



Common Tabular Formats - Tables

MPG Section III:	Related Tables from the Common tabular formats (CTF)	Reporting requirement	Flexibility, for Parties that need flexibility in the light of their capacities (self-determined)
D: Mitigation policies and measures, actions and plans, including those with mitigation co-benefits resulting from adaptation actions and economic diversification plans, related to implementing and achieving a nationally determined contribution under Article 4 of the Paris Agreement	Table 5. Mitigation policies and measures, actions, and plans, including those with mitigation co-benefits resulting from adaptation actions and economic diversification plans, related to implementing and achieving a nationally determined contribution under Article 4 of the Paris Agreement	82-85	Encouraged to report estimates of expected and achieved GHG emission reductions for its actions, policies, and measures
E. Summary of greenhouse gas emissions and removals	Table 6. Summary of greenhouse gas emissions and removals in accordance with the common reporting table 10 emission trends – summary	91	
F. Projections of greenhouse gas emissions and removals, as applicable	Table 7. Information on projections of greenhouse gas emissions and removals under a ‘with measures’ scenario	92-101	encouraged to report projections. Can instead report using a less detailed methodology or coverage.
	Table 8. Information on projections of greenhouse gas emissions and removals under a ‘with additional measures’ scenario		
	Table 9. Information on projections of greenhouse gas emissions and removals under a ‘without measures’ scenario		
	Table 10. Projections of key indicators	97	
	Table 11. Key underlying assumptions and parameters used for projections	96 c	

CTF tables for the electronic reporting of the information necessary to track progress made in implementing and achieving NDCs

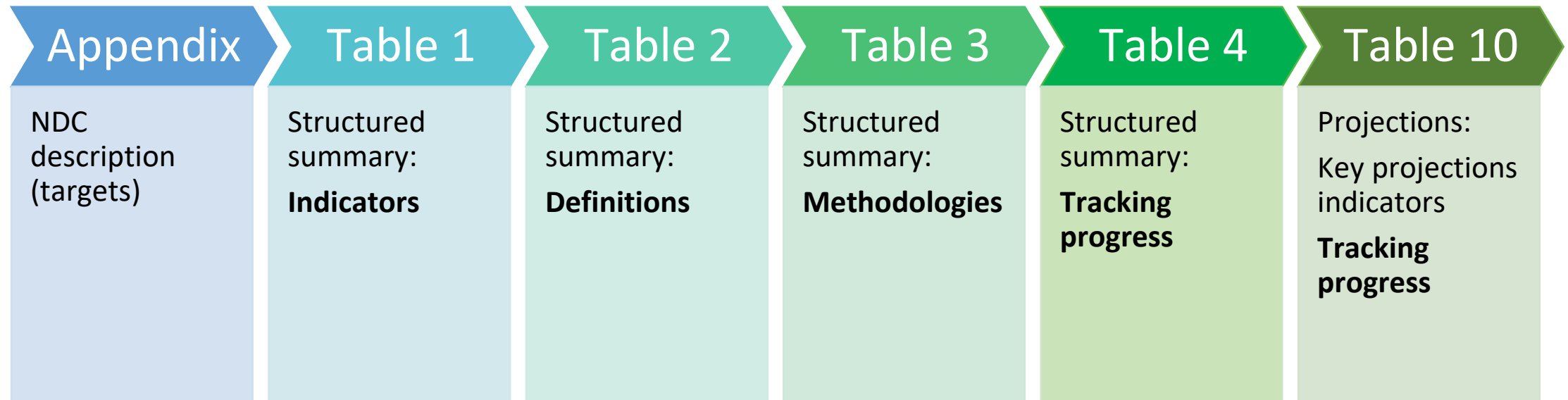
- **Appendix:** Description of a Party's NDC
- **Table 1:** Description of selected indicators
- **Table 2:** Definitions needed to understand the NDC
- **Table 3:** Methodologies and accounting approaches

- **Table 4:** Tracking progress
- **Table 5:** Mitigation policies, measures, actions and plans (Achieved)
- **Table 6:** Inventory summary

- **Table 5:** Mitigation policies, measures, actions and plans (expected)
- **Table 7:** Projections "with measures" scenario
- **Table 8:** Projections "with additional measures" scenario
- **Table 9:** Projections "without measure" scenario
- **Table 10:** Projections of key indicators
- **Table 11:** Key underlying assumptions and parameters of projections

- **Table 12.** Information necessary to track progress on the implementation and achievement of the domestic policies and measures implemented to address the social and economic consequences of response measures

CTF Tables - NDC indicators



CTF Table 1 – 4: Structured summary

Table 1 -3	Background information which is necessary to transparently track progress in the implementation and achievement of NDCs.
Table 1	Indicator/s which are selected by the Party to track its progress in implementing and achieving its NDC
Table 2	Definitions needed to understand each indicator, and other definitions needed to understand the NDCs
Table 3	Accounting approach

B. Description of a Party's NDC, including updates

- Each Party **shall** provide a **description of its NDC**, against which progress will be tracked:

#	NDC elements	Description
a)	Target(s) and description, including target type(s)*, as applicable	
b).	Target year(s) or period(s), and whether they are single-year or multi-year target(s), as applicable	
c).	Reference point(s), level(s), baseline(s), base year(s) or starting point(s), and their respective value(s), as applicable	
d).	Time frame(s) and/or periods for implementation, as applicable	
e).	Scope and coverage, including, as relevant, sectors, categories, activities, sources and sinks, pools and gases, as applicable	
f).	Intention to use cooperative approaches that involve the use of ITMOs under Article 6 towards NDCs under Article 4 of the Paris Agreement, as applicable	
g).	Any updates or clarifications of previously reported information, as applicable	

ⓘ This table is to be used by Parties on a voluntary basis, however information items are shall

ⓘ Parties with both unconditional and conditional targets in their NDC may add a row to the table to describe conditional targets

ⓘ This information overlaps with NDC/ICTU, ensure consistency or explain changes/updates

* *Examples of target types: economy-wide absolute emission reduction, emission intensity reduction, emission reduction below a projected baseline, mitigation co-benefits of adaptation actions or economic diversification plans, policies and measures, etc.*

Reporting information on tracking progress of NDCs

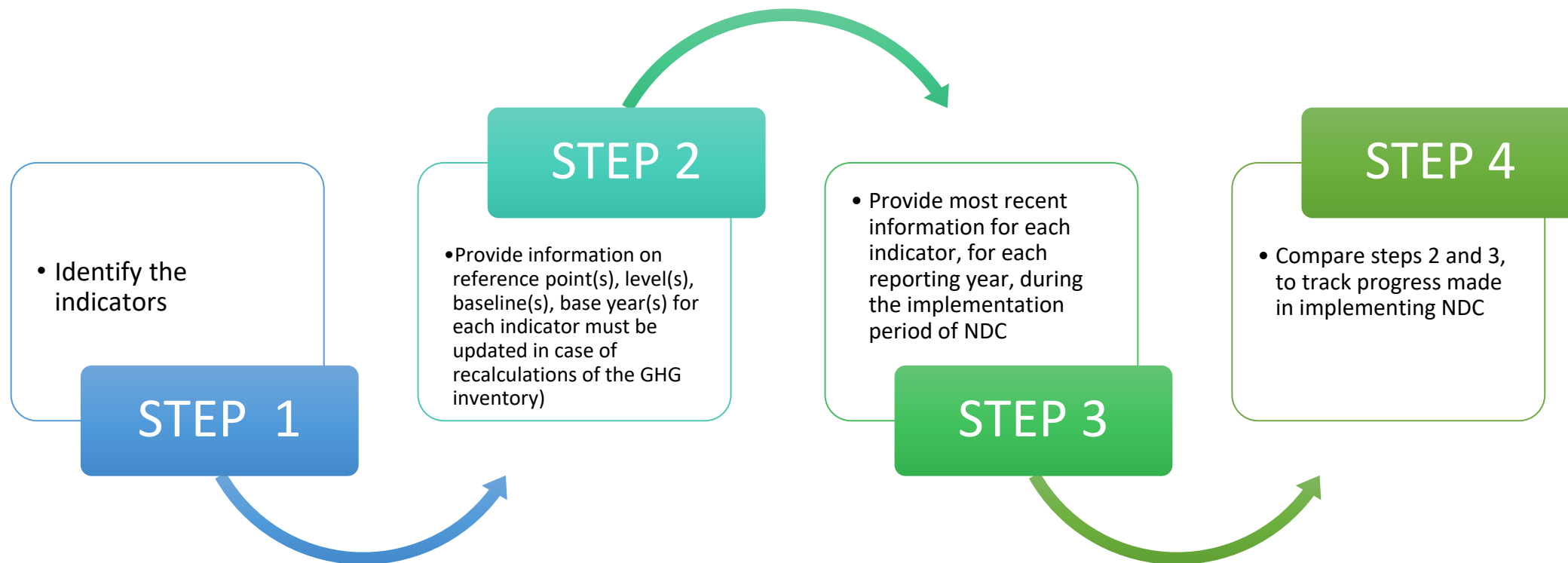
C. Information necessary to track progress made in implementing and achieving NDCs

- Each Party **shall** identify **indicator(s)** (*quantitative or qualitative; relevant to the NDC*) to track progress towards implementation and achievement of its NDC
- Each Party **shall** provide:
 - the information for each selected indicator for the **reference point(s)**, level(s), baseline(s), base year(s); and the **most recent information** for each reporting year; and **compare** these
 - description of each **methodology and accounting approach** used for its NDC target, construction of baseline, and each indicator identified; [*key parameters, assumptions, definitions, data sources, models, IPCC guidelines, metrics, etc*]
 - all this information in a **structured summary** to track progress:
 - ✓ Information on indicators [*reference level; most recent; at the reporting years in between*]
 - ✓ GHG emissions and removals consistent with the scope of its NDC, where applicable;
 - ✓ Contribution from the LULUCF sector for each year of the target period or target year, as applicable;
 - ✓ Information on use of ITMOs, as applicable;
- Each Party **with an NDC that consists mitigation co-benefits** from adaptation actions and economic diversification plans, **shall** provide information on domestic policies and measures implemented to address social and economic consequences of response measures

Reporting information on tracking progress of NDCs

C. Information necessary to track progress made in implementing and achieving NDCs

Overview of steps for Parties to track progress of their NDCs by indicators:



➤ For the first BTR that contains information on the end year of NDC, provide assessment of whether target is achieved.

Example CTF table 1 – Selected indicators

Indicator(s) selected to track progress	Description
GHG emissions covered by the NDC	Total economy-wide greenhouse gas emissions and removals in the relevant reporting year (t CO ₂ e) — <i>Emissions</i>
Information for the reference point(s), level(s), baseline(s), base year(s) or starting point(s), as appropriate	Reference level: 100 Mt CO ₂ e Base year: 2005 <i>RefEmissions</i>
Updates in accordance with any recalculation of the GHG inventory, as appropriate	Due to recalculations of the national GHG inventory, which were carried out after the communication of the NDC, the reference level changed from 101 Mt CO ₂ e to 100 Mt CO ₂ e.
Relation to the NDC	The NDC consists of an absolute economy-wide emission reduction target. Hence, total economy-wide greenhouse gas emissions and removals are the most appropriate indicator for this type of NDC.

Source: Partnership on Transparency in Paris Agreement, Accounting for National Determined Contributions



CTF Table 2

2. Structured summary: Definitions needed to understand NDC

<i>Definitions</i> ³	
<i>Definition needed to understand each indicator:</i>	
Total greenhouse gas emissions (GHG) excluding LULUCF per year (measured as millions of ton CO ₂ eq emissions):	
BAU emissions baseline scenario (measured as millions of ton CO ₂ eq emissions)	Methodology for building this baseline is included in the Chapter on information necessary to track progress made in implementing the NDC of the Party (BTR1). Values calculated as the sum of estimated emissions of the following direct GHGs: carbon dioxide (CO ₂), methane (CH ₄), nitrous oxide (N ₂ O), and hydrofluorocarbons (HFCs), measured in units of ton of carbon dioxide-equivalent, by using as the common weighting factors the Global Warming Potentials (GWP) for the 100-year time horizon listed in the same IPCC Assessment Report used for the target. The sectoral scope of the contribution covers all emissions sources described in the IPCC 2006 Reporting Guidelines (IPCC, 2006), including emissions from the categories of energy; industrial processes and product use (IPPU); waste; and agriculture, forestry, and other land use (AFOLU) but excluding sources from forestry and other land use.
<i>Any sector or category defined differently than in the national inventory report:</i>	
NA	NA
<i>Definition needed to understand mitigation co benefits of adaptation actions and/or economic diversification plans:</i>	
{Mitigation co-benefit(s)}	NA
<i>Any other relevant definitions:</i>	
{...}	NA

Notes: (1) Pursuant to para. 79 of the MPGs, each Party shall report the information referred to in paras. 65–78 of the MPGs in a narrative and common tabular format, as applicable. (2) A Party may amend the reporting format (e.g. Excel file) to remove specific rows in this table if the information to be provided in those rows is not applicable to the Party's NDC under Article 4 of the Paris Agreement, in accordance with the MPGs. (3) The Party could add rows for each additional sector, category, mitigation co-benefits of

Linking CTF Table

NDC description		Table 1: Indicators		Table 2: Definitions	
Annex II, appendix		Structured summary		Structured summary	
Target:	30% reduction below BAU	Indicator:	GHG emissions	Indicator:	GHG emissions using AR5 GWPs
Type:	Emission reduction below a projected baseline	Reference:	Starting point 2019: 169 Mt CO ₂ e BAU 2030: 215 Mt CO ₂ e	Differences to inventory:	Exclusion of emissions from HFCs
Year:	2030	Updates:	No recalculation conducted	Co-benefits:	N/A
Reference:	BAU emissions 2030: 215 Mt CO ₂ e	Relation to NDC:	The indicator directly relates to the NDC target		
Time frame:	2020-2030				
Scope:	Economy-wide; all sectors; CO ₂ , CH ₄ , N ₂ O				

Source: UNFCCC, CGE Training materials -Mitigation Assessment

CTF Table 3. Structured summary: Methodologies and accounting approaches

Methodologies and accounting approaches	
Metrics and IPCC guidelines	
Assumptions, key parameters, definitions, data sources, models	
Consistency (communicated and implemented NDC; accounting for NDC and GHG inventory)	
Changes (corrections, improvements, updates)	
Inclusion of all relevant categories, and exclusions	
Information associated with any cooperative approaches that involve use of ITMOs, if applicable	



CTF Table 4: Structured summary

Table 4 **Tracking progress made in implementing and achieving the NDC under article 4 of the Paris Agreement**

- It allows for comparing the target or targets of the NDC to the progress made so far, by using selected indicators
- The part is relevant for Parties that
 - participate in cooperative approaches that involve the use of internationally transferred mitigation outcomes (ITMOs) towards an NDC (this would be the participation in voluntary cooperation under Article 6 of the Paris Agreement), or
 - authorizes the use of mitigation outcomes for international mitigation purposes other than achievement of the NDC (this would be, for example, the use of credits under the Carbon Offsetting and Reduction Scheme for International Aviation – CORSIA).
- This information is needed to transparently document the so-called ‘corresponding adjustments’

Table 4:

	Unit, as applicable	Reference point(s), level(s), baseline(s), base year(s) or starting point(s)	Implementation period of the NDC covering information for previous reporting years and the most recent year, including the end year or end of period						Target level	Target year or period	Progress made towards the NDC, as determined by comparing the most recent information for each selected indicator, including for the end year or end of period, with the reference point(s), level(s), baseline(s), base year(s) or starting point(s)
			Year 1	Year 2	End Year			
Indicator(s)											

Table 4: Example of completed Table for tracking progress

	Unit, as applicable	Reference point(s) [...]	2021	2022	...	2030	Target level	Target year or period	Progress made [...]
Indicator(s) selected [...]									
GHG emissions covered by the NDC	Mt CO ₂ e	100 <i>RefEmissions</i>	88	86			80 <i>TargEmissions</i>	2030	14% below the reference level
Where applicable, total GHG emissions and removals consistent with the coverage of the NDC	Mt CO ₂ e	100	88	86					
Contribution from LULUCF [...]									
Each Party that participates in cooperative approaches [...]									
[...]	Relevant for Parties using cooperative approaches. See <i>Table 9</i>								
Assessment of the achievement of the Party's NDC under Article 4 of the Paris Agreement									
Relate the target of the Party's NDC:									
[...]	Relevant after the end of the NDC period. See <i>Table 10</i>								

Source: Partnership on Transparency in Paris Agreement, Accounting for National Determined Contributions

Example of completed table 4

(after the end of the NDC period)

Indicator(s) selected [-]	Unit, as applicable	Reference point(s) [-]	2021	2022	...	2030	Target level	Target year or period	Progress made [-]
GHG emissions covered by the NDC	Mt CO ₂ e	100 <i>RefEmissions</i>	88	86		79	80 <i>TargEmissions</i>	2030	21% below the reference level
Where applicable, total GHG emissions and removals consistent with the coverage of the NDC	Mt CO ₂ e	100	88	86		79			
Contribution from LULUCF [-]									
Each Party that participates in cooperative approaches [-]									
[-]	Relevant for Parties using cooperative approaches.								
Assessment of the achievement of the Party's NDC under Article 4 of the Paris Agreement									
Relate the target of the Party's NDC:									
Information for reference point(s) [-]	Mt CO ₂ e	100							
Final information for the indicator [-]	Mt CO ₂ e		88	86	...	79			
Comparison	The level in the target year is 79 Mt CO ₂ e. It is 21% below the reference level and it is below the target level.								
Achievement of NDC	Yes. The target has been achieved because the level in the target year is below the target level. <i>TargAchievement</i>								

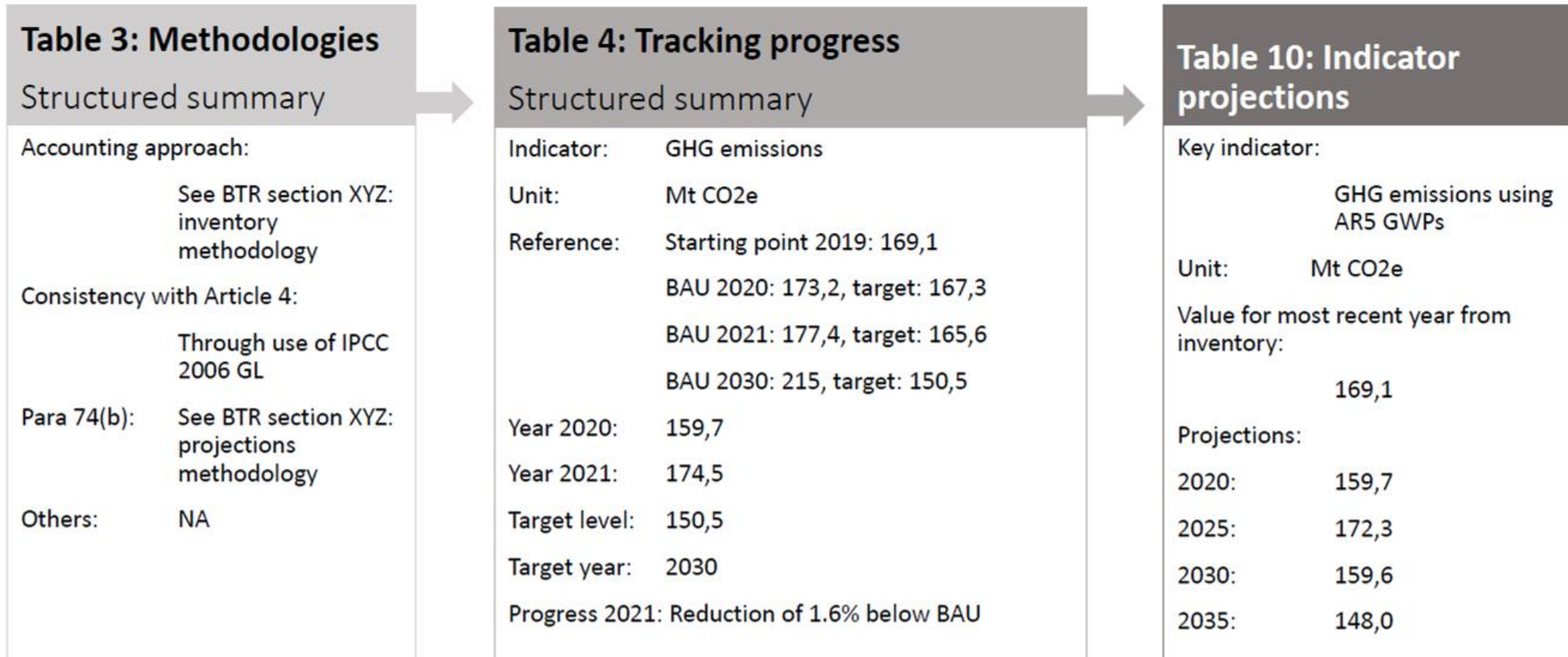
Example of completed table 4 (with ITMOs)

	Unit, as applicable	Reference point(s) [...]	2021	2022	...	2030	Target level	Target year or period	Progress made [...]
Indicator(s) selected [...]									
GHG emissions covered by the NDC	Mt CO ₂ e	100 <i>RefEmissions</i>	88	86			80 <i>TargEmissions</i>	2021 to 2030	14% below the reference level
Where applicable, total GHG emissions and removals consistent with the coverage of the NDC	Mt CO ₂ e	100	88	86					
Contribution from LULUCF [...]									
Each Party that participates in cooperative approaches [...]									
[...] indicative trajectory, trajectories or budget [...]									
[...] trajectory, trajectories or budget [...]	Mt CO ₂ e		89	88		80			
[...] emissions/ removals (non-GHG metrics)									
[...] emissions/ removals (PaMs NDC)									
[...] non-GHG indicator									
Annual quantity of ITMOs first transferred	Mt CO ₂ e		2	2					
Annual quantity of mitigation outcomes authorized	Mt CO ₂ e		1	1					
Annual quantity of ITMOs used towards achievement of the NDC									
Net annual quantity of ITMOs	Mt CO ₂ e		2	2					
[...] cumulative amount of ITMOs [...]									
Total quantitative corresponding adjustments used [...]	Mt CO ₂ e		2	2					
[...] cumulative information									
[...] annual emissions balance	Mt CO ₂ e		90	88					
[...] annual adjusted indicator									
Any other information									
Assessment of the achievement of the Party's NDC under Article 4 of the Paris Agreement									
Relate the target of the Party's NDC:									



Source: Partnership on Transparency in Paris Agreement, Accounting for National Determined Contributions

Examples of CTF tables 3, 4 and 10



Reporting information on tracking progress of NDCs

D. Mitigation policies and measures, actions and plans, including those with mitigation co-benefits resulting from adaptation actions and economic diversification plans, related to implementing and achieving an NDC

- Each Party **shall** provide information on **policies, actions and measures that support implementation of its NDC**, focusing on those that have the most significant impact on GHG emissions or removals and those impacting key categories in the national GHG inventory
 - To the extent possible, Parties **shall** organize reporting of actions **by sector** (energy, transport, IPPU, agriculture, LULUCF, waste, other), in a tabular format, including relevant information on mitigation co-benefits, as applicable:

Name	Description	Objectives	Type of instrument (regulatory, economic, other)	Status (planned, adopted, implemented)	Sectors affected	Gasses affected	Start year of implementation	Implementing entity
------	-------------	------------	--	--	------------------	-----------------	------------------------------	---------------------

- Each Party may also provide information on related costs, non-GHG mitigation benefits and how these actions interact with each other, as appropriate
- Each Party **shall** provide information on **estimates of expected and achieved GHG emission reductions [FX: encouraged]**; and **methodologies and assumptions used**, to the extent possible
- Each Party should: identify PAMs no longer in-place and explain why; provide information on how its PAMs are modifying longer-terms trends in GHG emissions and removals

CTF Table 5

Mitigation policies and measures, actions, and plans, including those with mitigation co-benefits resulting from adaptation actions and economic diversification plans, related to implementing and achieving a nationally determined contribution under Article 4 of the Paris Agreement

Name	Description	Objectives	Type of instrument	Status	Sector(s) affected	Gases affected	Start year of implementation	Implementing entity or entities	Estimates of GHG emission reductions	
									Achieved	Expected

Table 5: Key terms to understand

Mitigation policies or Plans

- Refers to a decision or set of decisions that a government takes to achieve certain objectives
- policies could be defined as instruments (such as regulations, taxes, subsidies, and information instruments) that enable or incentivize concrete actions to be implemented (such as replacement of technology or changes in behavior)

Actions or measures

- Refers to a concrete activity or set of activities taken by a government to implement a policy or plan

Mitigation co-benefits

- Results from actions undertaken as part of adaptation and/or economic diversification plans where these generate emissions reductions and thereby contribute to achieving mitigation outcomes

Parties to the Paris Agreement may implement mitigation policies and measures, actions and plans in any sector of their economy and must report information on those actions, policies and measures that have the most significant impact on GHG emissions or removals and those impacting key categories in the national GHG inventory

CTF - Table 5:

5. Mitigation policies and measures, actions and plans, including those with mitigation co-benefits resulting from adaptation actions and economic diversification plans, related to implementing and achieving a nationally determined contribution under Article 4 of the Paris Agreement^{a, b}

Name ^c	Description ^{d, e, f}	Objectives	Type of instrument ^g	Status ^h	Sector(s) affected ⁱ	Gases affected	Start year of implementation	Implementing entity or entities	Estimates of GHG emission reductions (kt CO ₂ eq) ^{j, k}	
									Achieved	Expected

^a Each Party shall provide information on actions, policies and measures that support the implementation and achievement of its NDC under Article 4 of the Paris Agreement, focusing on those that have the most significant impact on GHG emissions or removals and those impacting key categories in the national GHG inventory. This information shall be presented in narrative and tabular format (para. 80 of the MPGs).

^b For each Party with an NDC under Article 4 of the Paris Agreement that consists of mitigation co-benefits resulting from Parties' adaptation actions and/or economic diversification plans consistent with Article 4, para. 7, information to be reported under paras. 80, 82 and 83 of the MPGs includes relevant information on policies and measures contributing to mitigation co-benefits resulting from adaptation actions or economic diversification plans (para. 84 of the MPGs).

^c Parties may indicate whether a measure is included in the 'with measures' projections.

^d Additional information may also be provided on the cost of the mitigation actions, non-GHG mitigation benefits, and how the mitigation action interacts with other mitigation actions, as appropriate (para. 83(a-c) of the MPGs).

^e Parties should identify actions, policies and measures that influence GHG emissions from international transport (para. 88 of the MPGs).

^f Parties should, to the extent possible, provide information about how actions, policies and measures are modifying longer-term trends in GHG emissions and removals (para. 89 of the MPGs).

^g Parties shall, to the extent possible, provide information on the types of instrument: regulatory, economic instrument or other (para. 82(d) of the MPGs).

^h Parties shall, to the extent possible, use the following descriptive terms to report on status of implementation: planned, adopted or implemented (para. 82(e) of the MPGs).

ⁱ Parties shall, to the extent possible, provide information on sector(s) affected: energy, transport, industrial processes and product use, agriculture, LULUCF, waste management or other (paras. 81 and 82(f) of the MPGs).

^j Each Party shall provide, to the extent possible, estimates of expected and achieved GHG emission reductions for its actions, policies and measures in the tabular format; those developing country Parties that need flexibility in the light of their capacities with respect to this provision are instead encouraged to report this information (para. 85 of the MPGs).

^k To the extent available, each Party shall describe the methodologies and assumptions used to estimate the GHG emission reductions or removals due to each action, policy and measure. This information may be presented in an annex to the biennial transparency report (para. 86 of the MPGs).

Custom footnotes:

Documentation box:



Example of the CTF Table 5 for Mauritius

Name	Description	Objectives	Type of instrument	Status	Sector(s) affected	Gases affected	Start year of implementation	Implementing entity or entities	Estimates of GHG emission reductions (kt CO2 eq)	
									Achieved	Expected in 2030
Improved fuel economy of vehicles	Improvements in the fuel intensity of vehicles at the rate of 0.5% per year between 2022 and 2030, decreasing to 0.25% per year after 2030.	Technological improvements, better fuel economies.	Regulatory, economic	Planned	Transport	CO2, CH4, N2O	2021	MLTLR; TMRSU; Mauritius Standards Bureau (MSB); National Land Transport Authority (NLTA).		6.7

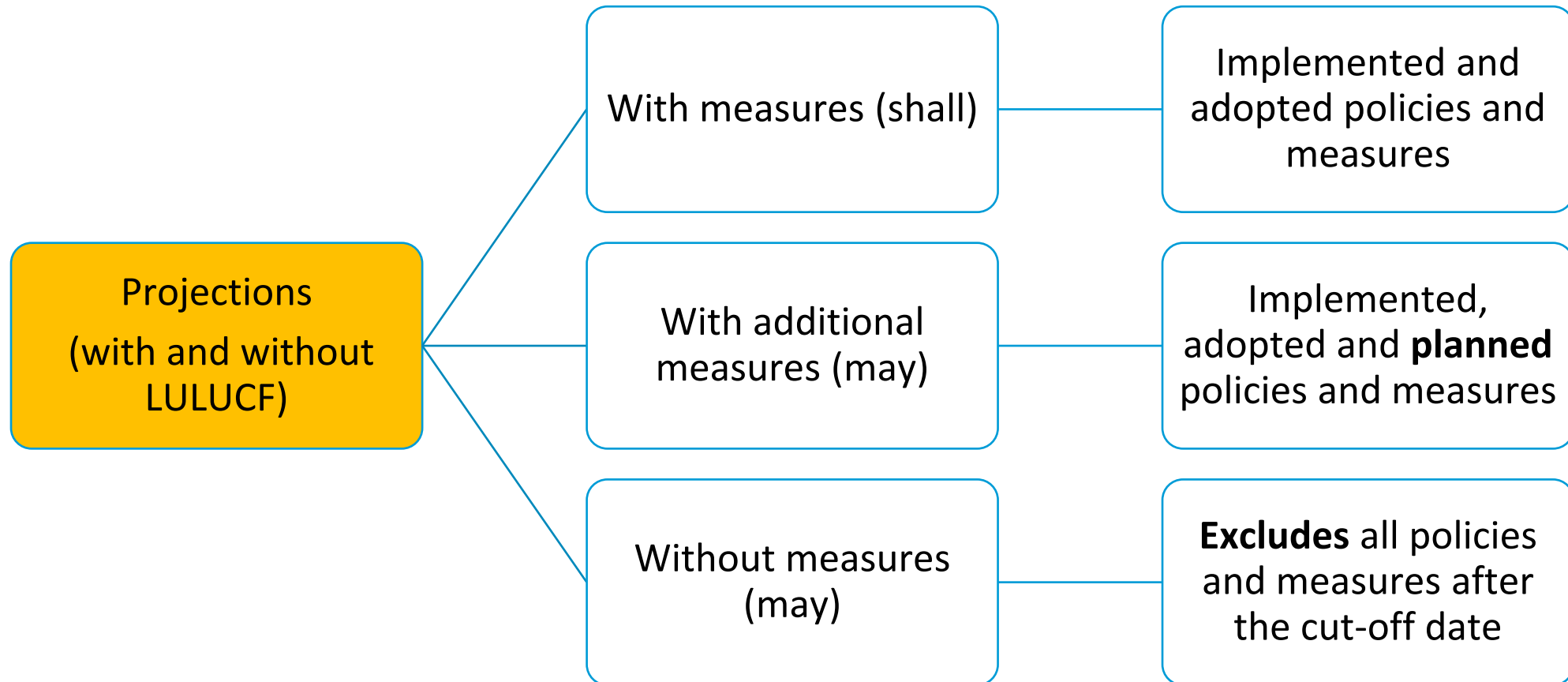
CTF Table 6

Summary of greenhouse gas emissions and removals in accordance with the common reporting table 10 emission trends – summary

According to paragraph 91 of the MPGs, each Party that submits a stand-alone national inventory report shall provide a summary of its GHG emissions and removals. This information shall be provided for those reporting years corresponding to the Party's most recent national inventory report, in a tabular format

- Each Party, that submits a stand-alone national inventory report, **shall** provide a **summary of its GHG emissions and removals.**

CTF Table 7,8,9 - Projections of GHG emissions



7. Information on projections of greenhouse gas emissions and removals under a 'with measures' scenario

7. Information on projections of greenhouse gas emissions and removals under a '<u>with measures</u>' scenario^{a,b}				
Sector^d	<i>Most recent year in the Party's national inventory report (kt CO₂ eq)^c</i>	<i>Projections of GHG emissions and removals, (kt CO₂ eq)^c</i>		
	2016	2025	2030	2035
	Energy	3013		2005
Transport	1169		1385	
Industrial processes and product use	311		479	
Agriculture	158		188	
LULUCF	-330		-293	
Waste	559		322	
Other (specify)				
Gas				
CO ₂ emissions including net CO ₂ from LULUCF				
CO ₂ emissions excluding net CO ₂ from LULUCF				
CH ₄ emissions including CH ₄ from LULUCF				
CH ₄ emissions excluding CH ₄ from LULUCF				
N ₂ O emissions including N ₂ O from LULUCF				
N ₂ O emissions excluding N ₂ O from LULUCF				
HFCs				
PFCs				
SF ₆				
NF ₃				
Other (specify)				
Total with LULUCF	4881		4086	
Total without LULUCF	5211		4379	

8. Information on projections of greenhouse gas emissions and removals under a 'with additional measures' scenario

9. Information on projections of greenhouse gas emissions and removals under a 'without measures' scenario

8. Information on projections of greenhouse gas emissions and removals under a 'with additional measures' scenario ^{a,b}				
Sector ^d	Most recent year in the Party's national inventory report (kt CO2 eq) ^c	Projections of GHG emissions and removals, (kt CO2 eq) ^c		
		20XX	20X(0)(5)	20X(0)(5)
		20XX	20X(0)(5)	20X(0)(5)
Energy				
Transport				
Industrial processes and product use				
Agriculture				
LULUCF				
Waste				
Other (specify)				
Gas				
CO2 emissions including net CO2 from LULUCF				
CO2 emissions excluding net CO2 from LULUCF				
CH4 emissions including CH4 from LULUCF				
CH4 emissions excluding CH4 from LULUCF				
N2O emissions including N2O from LULUCF				
N2O emissions excluding N2O from LULUCF				
HFCs				
PFCs				
SF6				
NF3				
Other (specify)				
Total with LULUCF				
Total without LULUCF				

9. Information on projections of greenhouse gas emissions and removals under a 'without measures' scenario ^{a,b}				
Sector ^d	Most recent year in the Party's national inventory report (kt CO2 eq) ^c	Projections of GHG emissions and removals, (kt CO2 eq) ^c		
		2016	2025	2030
		2016	2025	2030
Energy	3013		4316	
Transport	1169		1514	
Industrial processes and product use	311		534	
Agriculture	158		188	
LULUCF	-330		-293	
Waste	559		635	
Other (specify)				
Gas				
CO2 emissions including net CO2 from LULUCF				
CO2 emissions excluding net CO2 from LULUCF				
CH4 emissions including CH4 from LULUCF				
CH4 emissions excluding CH4 from LULUCF				
N2O emissions including N2O from LULUCF				
N2O emissions excluding N2O from LULUCF				
HFCs				
PFCs				
SF6				
NF3				
Other (specify)				
Total with LULUCF	4881		6894	
Total without LULUCF	5211		7187	

10. Projections of key indicators

Key indicator(s): ^c	Unit, as applicable	Most recent year in the Party's national	Projections of key indicators ^d		
		2021	2025	2030	2035
Total economy-wide greenhouse gas emissions and removals	kt CO2 eq	4881	4409	4086	3800
Solar Power Installation	Gigawatts (GW)	50	80	120	170
Electric Vehicle Adoption	Number of Electric Vehicle	50	100	200	400
Forest Cover Increase	Hectares (in thousands)	200	250	300	360

11. Key underlying assumptions and parameters used for projections

11. Key underlying assumptions and parameters used for projections^{a,b}

Key underlying assumptions and parameters: ^c	Unit, as applicable	Most recent year in the Party's national inventory report, or the most recent year for which data is available				Projections of key underlying assumptions and parameters ^d			
		2021	2025	2030	2035	2025	2030	2035	
Gross Domestic Product Growth Rate	Percentage (%)	3.5	4	4.5	5				
Population Growth Rate	Percentage (%)	1.2	1.5	1.8	2				
Energy Consumption per Capita	MWh per person	7.5	8	8.5	9				

CTF tables 12: Response Measure

12. Information necessary to track progress on the implementation and achievement of the domestic policies and measures implemented to address the social and economic consequences of response measures^a

<i>Sectors and activities associated with the response measures^b</i>	<i>Social and economic consequences of the response measures^c</i>	<i>Challenges in and barriers to addressing the consequences^d</i>	<i>Actions to address the consequences^e</i>
---	--	--	--

^a Each Party with an NDC under Article 4 that consists of adaptation actions and/or economic diversification plans resulting in mitigation co-benefits consistent with Article 4, para. 7, of the Paris Agreement shall provide the information necessary to track progress on the implementation and achievement of the domestic policies and measures implemented to address the social and economic consequences of response measures (para. 78 of the MPGs).

^b In accordance with para. 78(a) of the MPGs.

^c In accordance with para. 78(b) of the MPGs.



Understanding the tables

Progress of what?	What is the Target?	Description of NDC	Appendix
How will I track Progress?	Definitions	Definition necessary to understand the NDC	Table 1
	Indicators	Description of the indicator	Table 2
	Methodologies	Methodologies and accounting approaches	Table 3
How will I achieve the Target?	Policies, Measures, Actions & Plans	Mitigation policies, measures, action and plans	Table 5
	Projections	Projections of GHG emissions and Removals	Table 7,8&9
		Projections of indicators	Table 10
		Assumptions and parameters for projections	Table 11
Am I on Track?/ Did I achieve the target?	GHG Emissions and Removals	Summary of GHG inventory	Table 6
	Make Assessment	Structured summary	Table 4



CBIT-GSP
CLIMATE TRANSPARENCY



copenhagen
climate centre

Thank you for your attention!

Khetsiwe Khumalo | Khetsiwe.khumalo@un.org
UNEP-CCC

