



United Nations
Climate Change

Introduction to new UNFCCC tools available for reporting inventories

Webinar presented by
Tomoyuki Aizawa
Transparency Division

13 May 2024

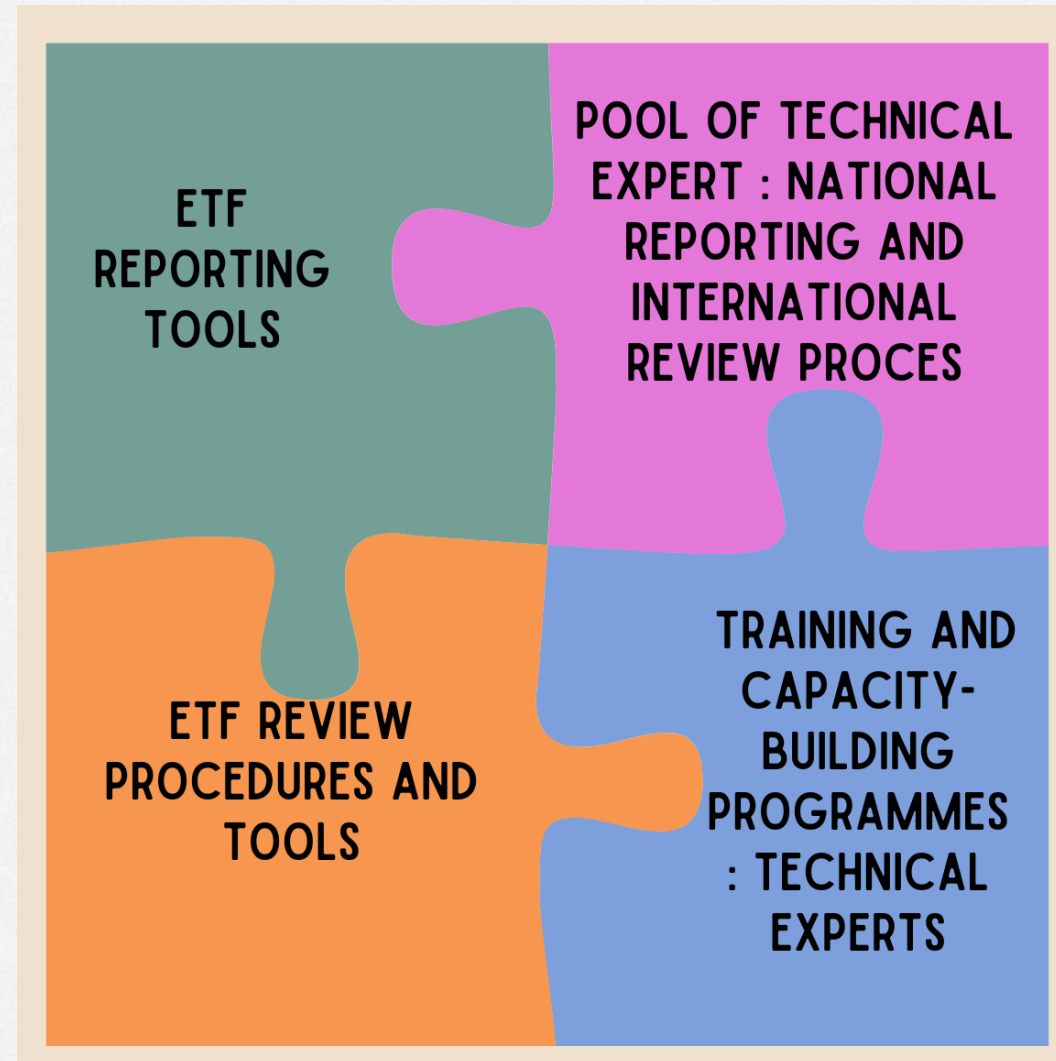
#Together4Transparency

A decorative horizontal bar consisting of several colored segments: teal, yellow, orange, light blue, purple, green, and red.

Building blocks for ETF implementation

Facilitates the submission of information by Parties in a user-friendly and efficient manner

Facilitates the effective and efficient review of submitted information



Enhances sustainability, boosts effectiveness, and increases efficiency in both national reporting and the international review process

Enhance the skills and knowledge of technical experts to report and review information in a manner that is both efficient and effective

[#Together4Transparency](#)



Mandates

Concerning ETF reporting tools



Decision 18/CMA.1

Requested SBSTA to develop:

- common reporting tables (CRTs) for GHG inventories
- common tabular formats (CTFs) for tracking NDC progress and achievements
- common tabular formats (CTFs) for support provided, needed and received



Decision 5/CMA.3

Adopted :

- CRTs for GHG inventories
- CTFs for NDC progress and achievements
- CTFs for support provided, needed and received



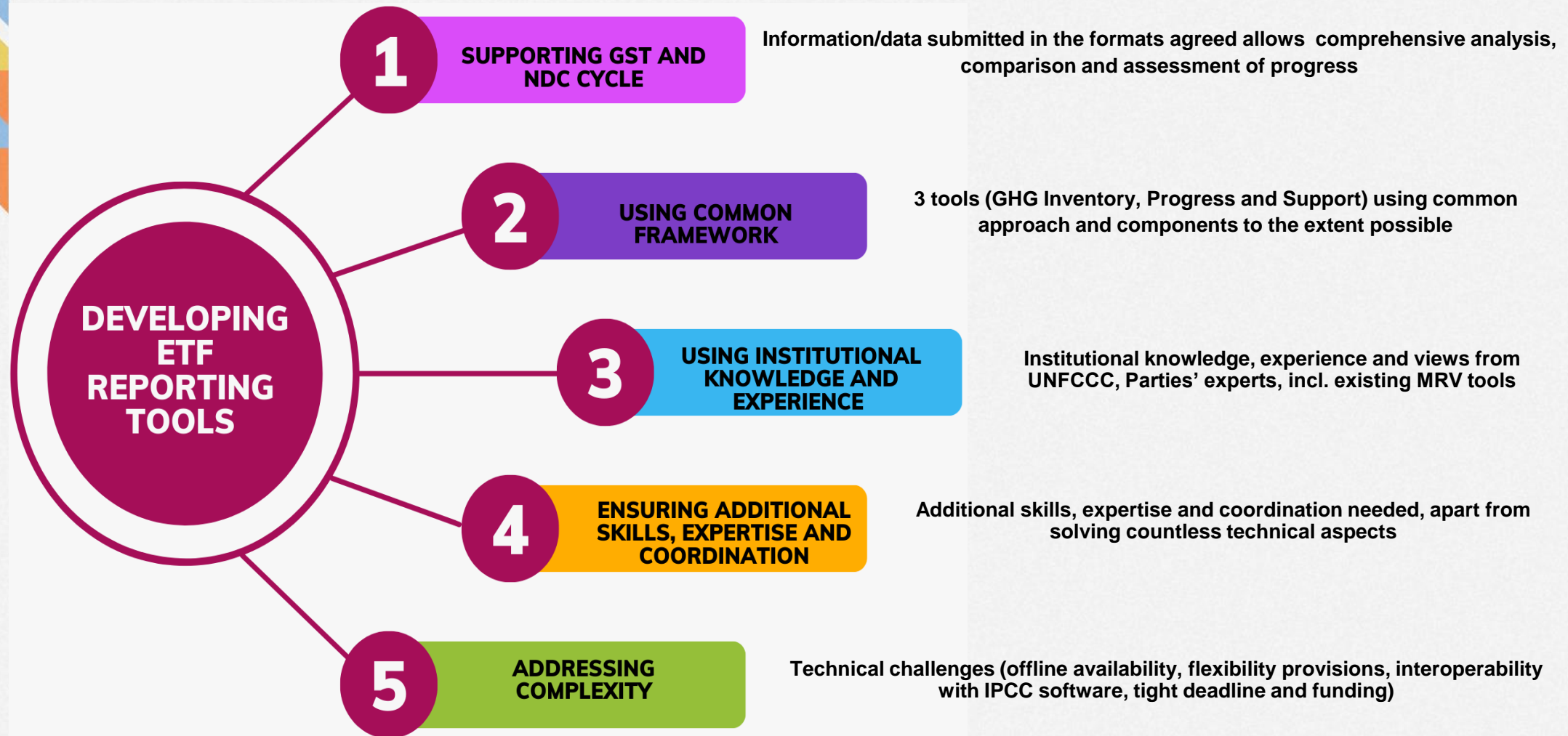
Decision 5/CMA.3

Requested the secretariat to :

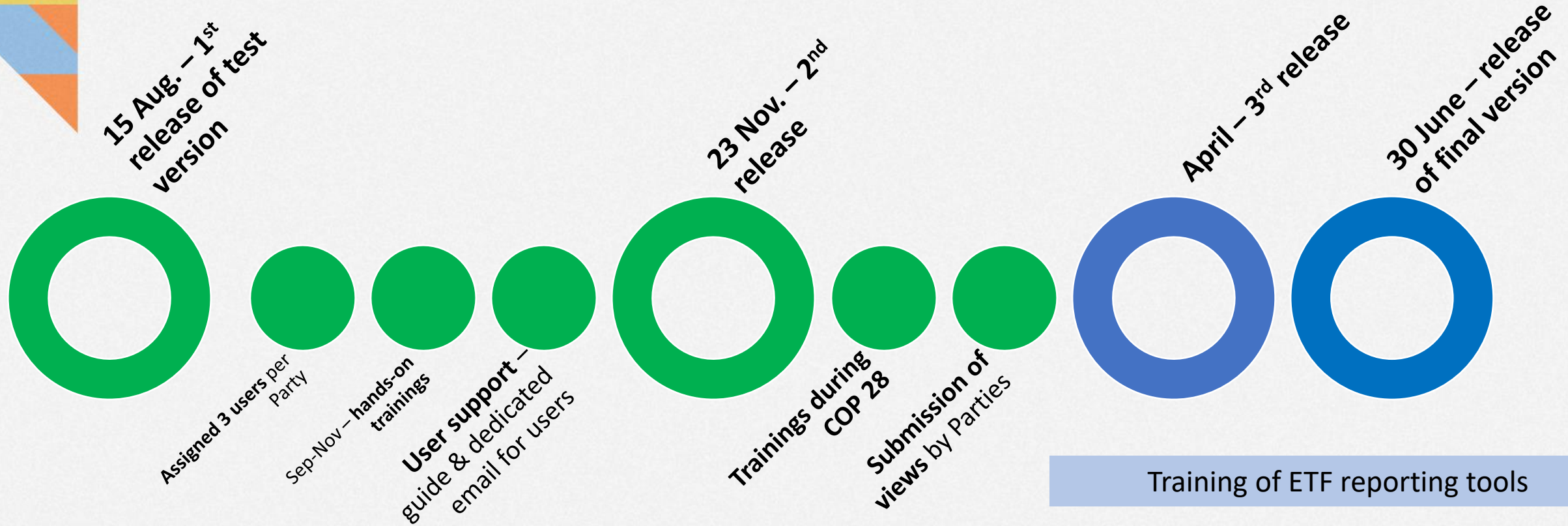
- Develop the reporting tools
- Test version of the tools by June 2023
- Final version of the tools by June 2024
- Update Parties on progress at SBSTA sessions
- Organize technical training workshops
- Facilitate interoperability with IPCC software
- Establish an interactive web-portal for support info by Dec 2025



Approach



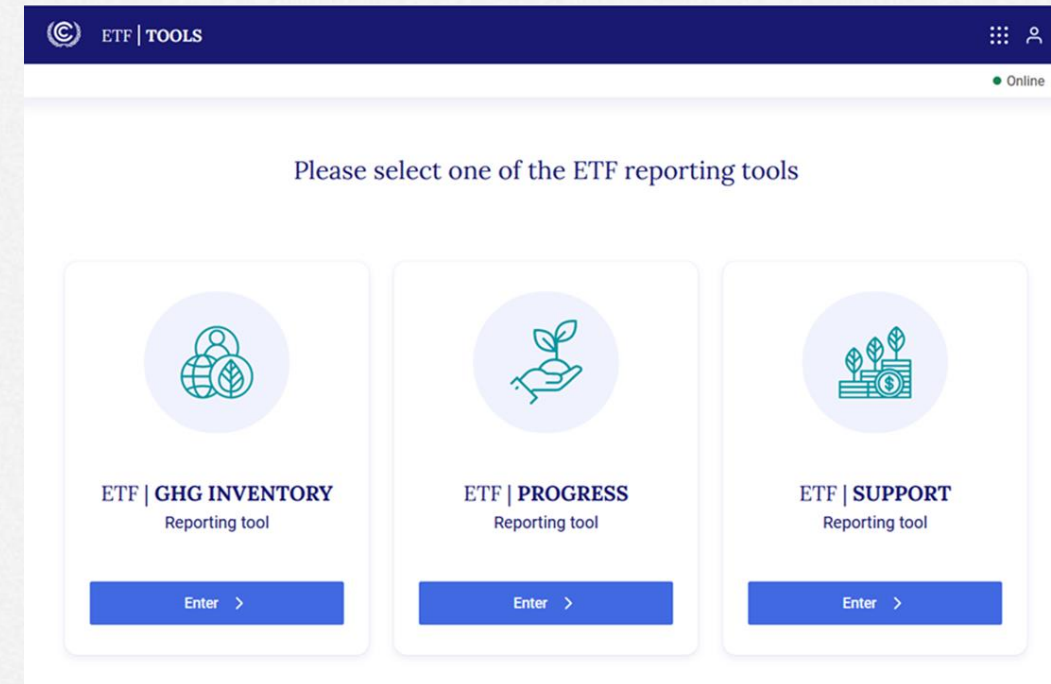
Deliverables



Training session on ETF GHG inventory tool

At the end of the training session, the participants will be able to:

- ❖ Create a new version
- ❖ Specify version settings
- ❖ View and access all CRT versions
- ❖ View and move through the navigation tree and add country specific nodes
- ❖ Add/modify/export data in the data entry grid
- ❖ Export/import of data entry grids to Excel
- ❖ Export/import data entry grids as a JSON file, add/edit data there and import back into the application
- ❖ Generate/download reporting tables
- ❖ Work in offline mode (after creation of a version)



#Together4Transparency



Ask for the training participants

Please read the below recommended reading materials prior to the training workshop :

- a. **To be familiar with the enhanced transparency framework :** ETF reference manual | UNFCCC' [FAQ's](#) on the operationalization of the Enhanced Transparency Framework | UNFCCC and [ETF Handbook-Edt2_RU.pdf \(unfccc.int\)](#)
- b. **To be familiar with CRT :** Common Reporting Tables (CRT) on NIRs | UNFCCC





Quick live demo of ETF GHG inventory tool

List of actions for today's live demo



E1

- Walk through the ETF | GHG Inventory reporting tool

E2

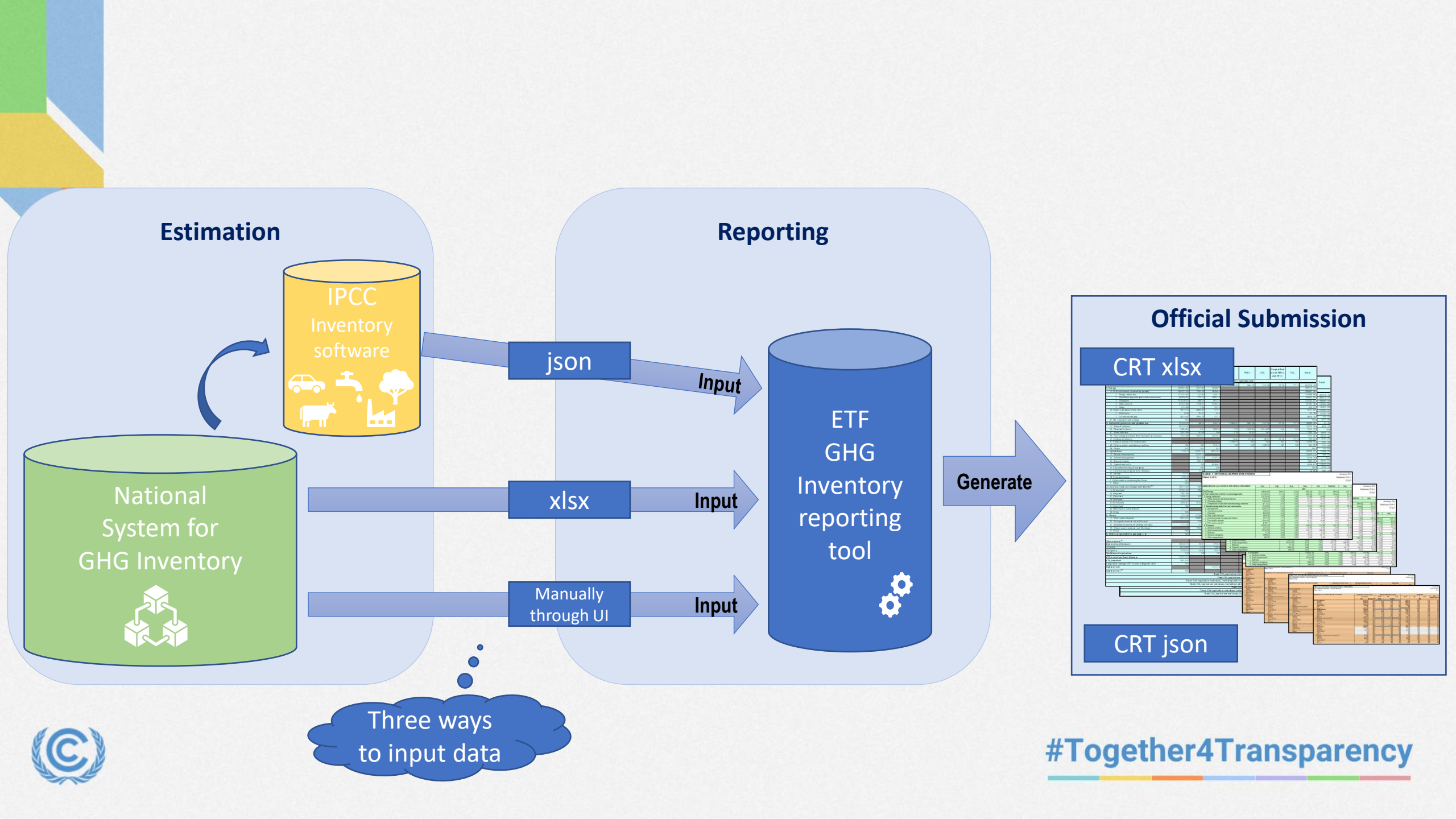
- Creating a version & Specifying version setting

E3

- Customizing navigation tree

E4

- Data entry
 - Manual
 - using Excel export / import
 - using json file export / import



#Together4Transparency



User Interface of GHG Inventory Reporting Tool



- ❑ **Inventories** – To start a new inventory and to configure the properties relating to the inventory, such as submission year, sectors, options and years to be included in the inventory
- ❑ **Data entry** – For entering and/or editing data in the data entry grids
- ❑ **Reporting tables** – For viewing reporting tables in Excel, in the format of the agreed CRT, for a particular year
- ❑ **QA/QC** – Placeholder for various types of QA/QC (not implemented yet)

ETF | GHG INVENTORY | Inventories | **Data entry** | Reporting tables | QA/QC

Version: XYZ-CRT-2026-V0.3 | Status: Started | DEFAULT | Online

Navigation tree

- Sectors/Totals
 - > 1. Energy
 - > 2. Industrial processes and product use
 - > 3. Agriculture
 - > 4. Land Use, Land-Use Change and Forestry
 - > 5. Waste
 - 6. Other (please specify) +

1.A.1.b. Petroleum refining > Liquid fuels

Expand all | Show/hide years |

ID	Description	Unit	1990	1991	1992
01	Fuel consumption	TJ			
02	Calorific value		▼	▼	▼
03	▼ Method				
04	CO ₂		▼	▼	▼
05	CH ₄		▼	▼	▼
06	N ₂ O		▼	▼	▼

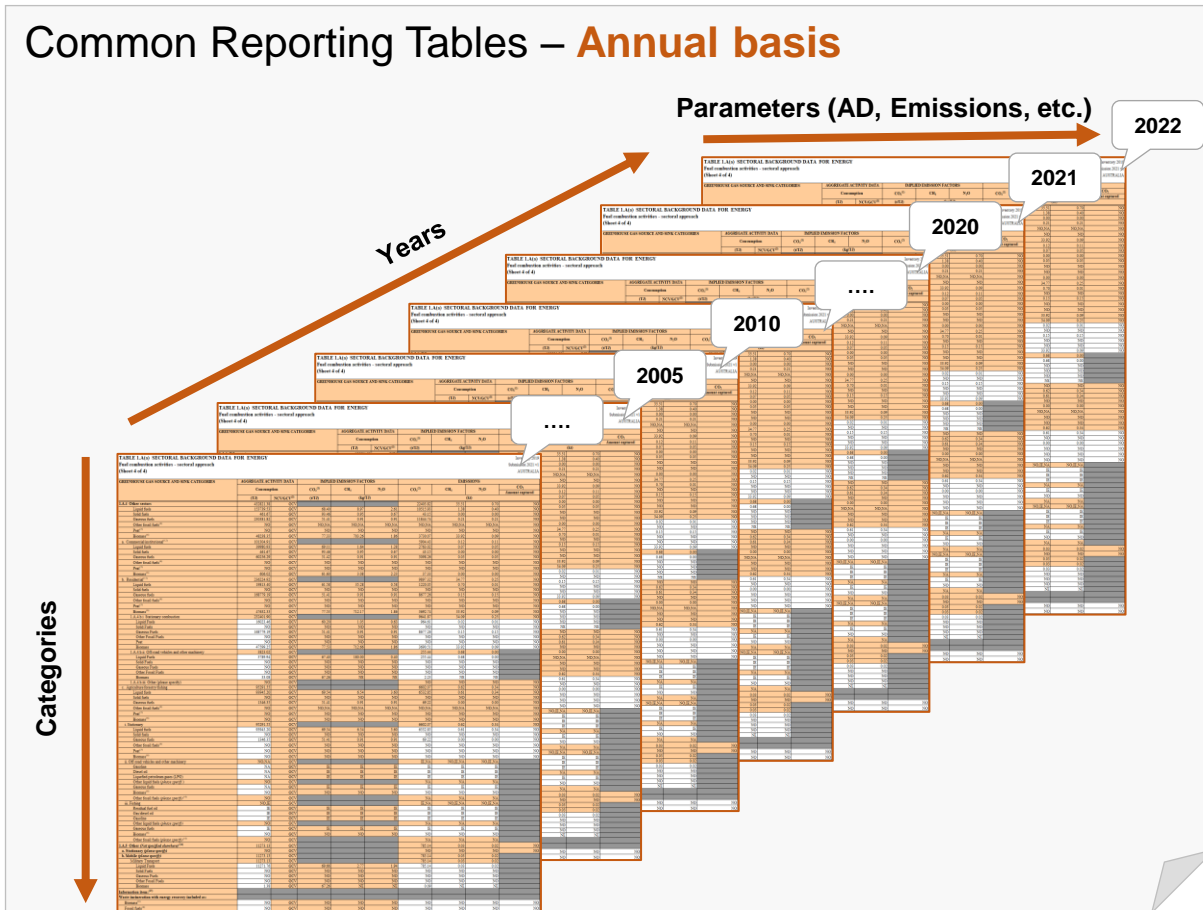


Common Reporting Tables and Data entry grids



i Data entry grids have categories for all sectors arranged in navigation tree and allows to enter data for the whole time series for a selected category. The data from the data entry grids are mapped to the CRTs on an annual basis when you generate/download the reporting tables.

Common Reporting Tables – Annual basis



Data entry grids – Category basis

