

*2024 Mutual Learning Program (MLP) for Enhanced Transparency*

# National system for tracking the implementation of NDCs in Japan

31 May 2024

**Takashi Morimoto**

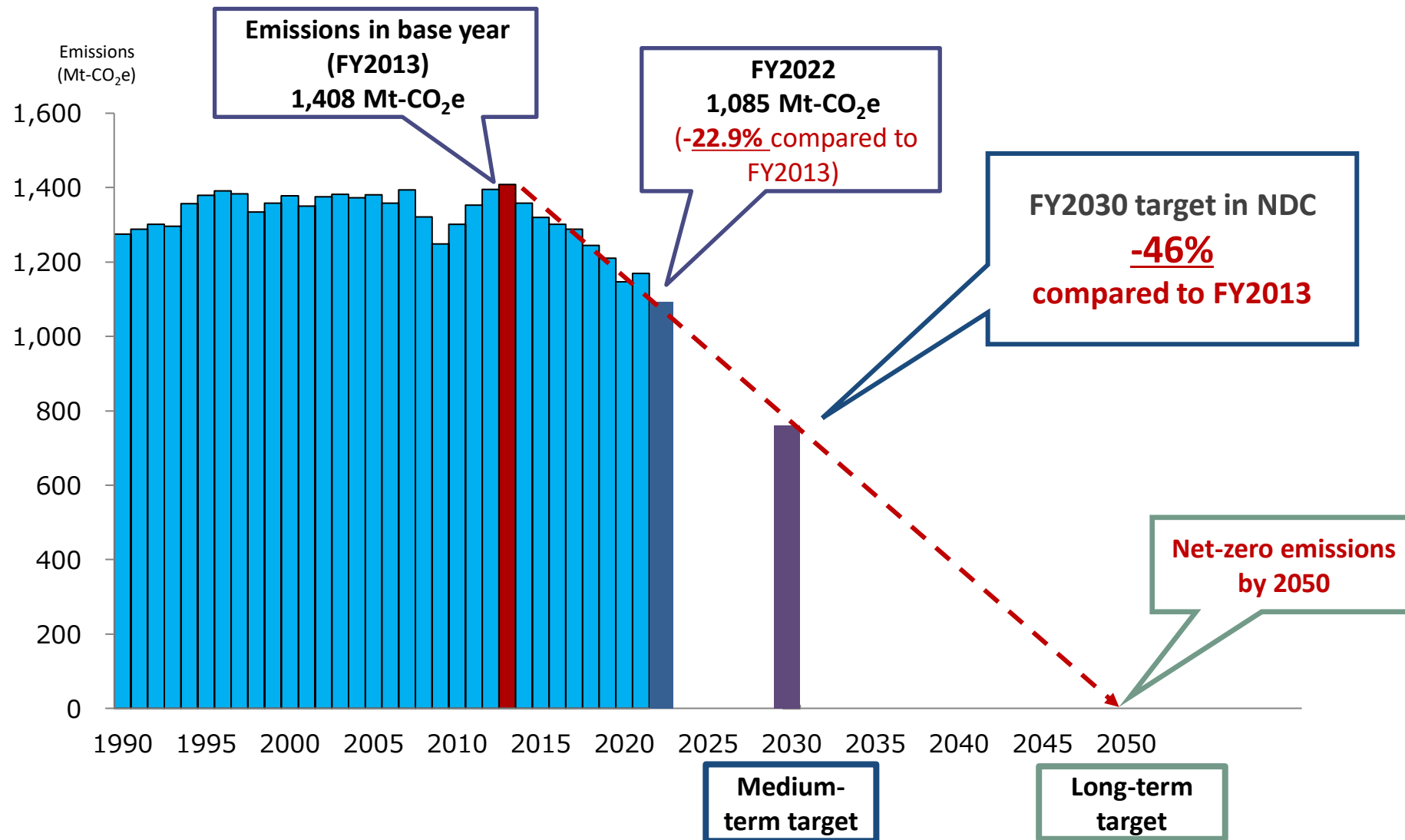
Mitsubishi UFJ Research and Consulting Co., Ltd. (MURC), Japan

# Japan's NDC

- **2030 target: 46% reduction against FY2013** by FY2030 (continue strenuous efforts to 50%)

<b>Emission reduction target</b>	<b>-46% against FY2013</b>
<b>Covered gases</b>	CO <sub>2</sub> , CH <sub>4</sub> , N <sub>2</sub> O, HFCs, PFCs, SF <sub>6</sub> , and NF <sub>3</sub>
<b>Covered sectors</b>	Energy, Transport, IPPU, Agriculture, LULUCF, and Waste
<b>Contribution from LULUCF</b>	Base year: Excluded Target year: Included (Activity-based approach) * Forest-related activities (Afforestation/Reforestation, Deforestation and Forest Management activities): gross-net basis compared with FY1990 Cropland management, Grassland management and Revegetation: net-net basis compared with FY1990
<b>Art.6 mechanism</b>	Japan will establish and implement the JCM (Joint Crediting Mechanism) and appropriately count the acquired credits to achieve its NDC.

# Japan's medium- and long-term emission reduction targets



# Plan for Global Warming Countermeasures

- ✓ The government established the *Plan for Global Warming Countermeasures* to achieve the NDC.
- ✓ *The Plan* sets
  - ✓ **targets by sector and gas**
  - ✓ **policies and measures (PaMs)** that the national government, local governments, businesses and citizens should implement
  - ✓ **progress management scheme**

# Breakdown targets by sector and gas in FY2030

Greenhouse Gas Emissions and Removals (Unit: Mt-CO <sub>2</sub> )		2013 Emissions	2030 Emissions	Reduction Rate
		1,408	760	▲ 46%
Energy-related CO <sub>2</sub>		1,235	677	▲ 45%
Sector	Industry	463	289	▲ 38%
	Business	238	116	▲ 51%
	Household	208	70	▲ 66%
	Transportation	224	146	▲ 35%
	Energy conversion	106	56	▲ 47%
Non-energy-related CO <sub>2</sub> , CH <sub>4</sub> , N <sub>2</sub> O		134	115	▲ 14%
F-gases		39	22	▲ 44%
Removals from LULUCF		-	▲ 48	-
Joint Credit Mechanism (JCM)		We aim to achieve international emission reductions and removal of about 100 Mt-CO <sub>2</sub> cumulatively in FY2030 through public-private partnership. The credits acquired by Japan will be counted appropriately to achieve Japan's NDCs.		

# Evaluation approach of the *Plan's* progress

- ✓ The *Plan's* progress status is reviewed annually.
- ✓ The measure evaluation indicator (MEI), the target of MEI in FY2030, and the expected emission reductions in FY2030 are set for each PaM included in the *Plan*.
- ✓ The progress of each PaM are **rated from A to E** according to the following criteria, and the achieved emission reductions are estimated.

**A** : Measure evaluation indicator (MEI) is **expected to exceed the target level** if current efforts continue and for which **the actual results have already exceeded** the target level

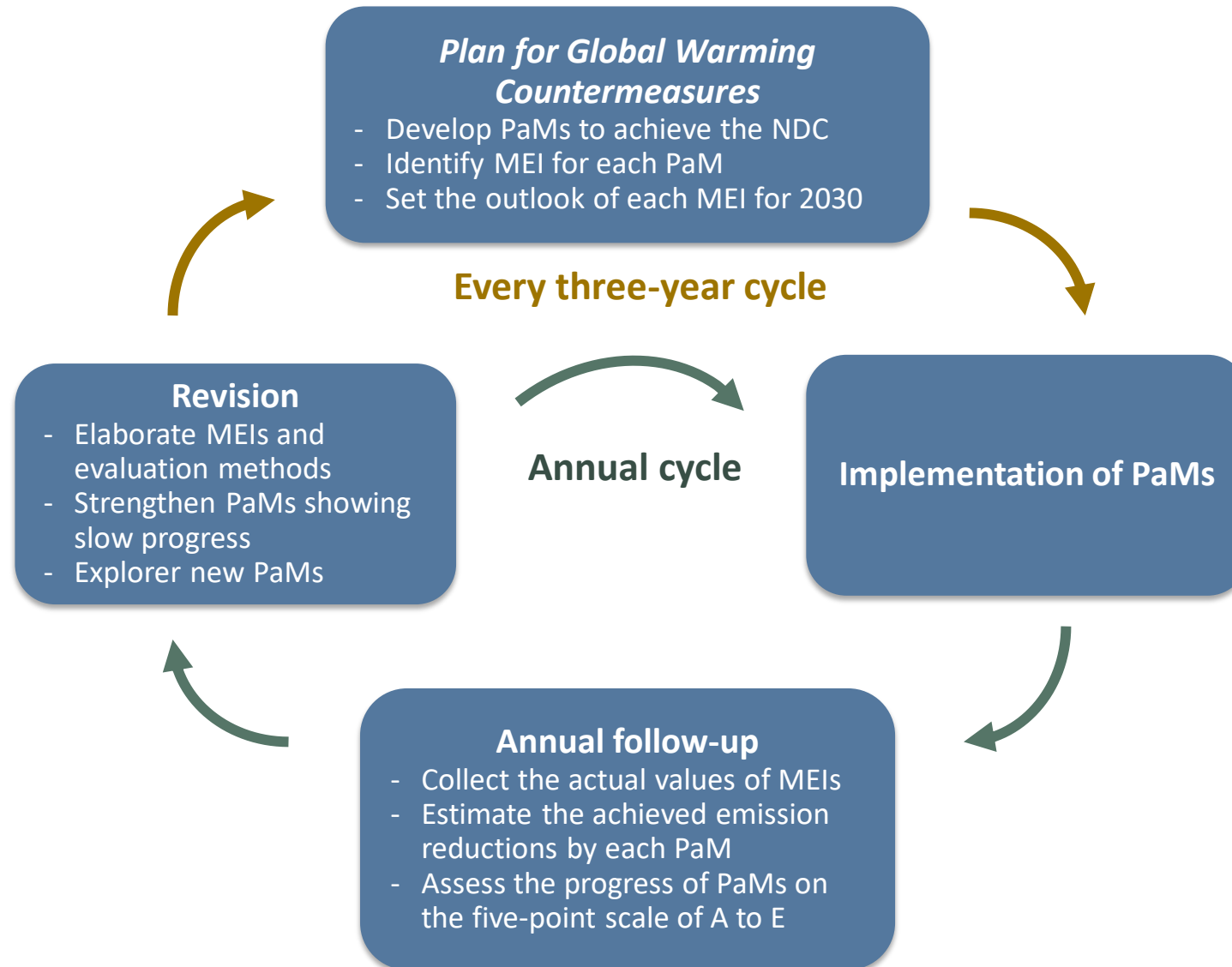
**B** : MEI is **expected to exceed the target level** if current efforts continue (excluding A).

**C** : MEI is **expected to be equivalent to the target level** if current efforts continue.

**D** : MEI is **expected to fall below the target level** if current efforts continue.

**E** : Other PaMs for which **quantitative data cannot be obtained**

# Evaluation and implementation cycle



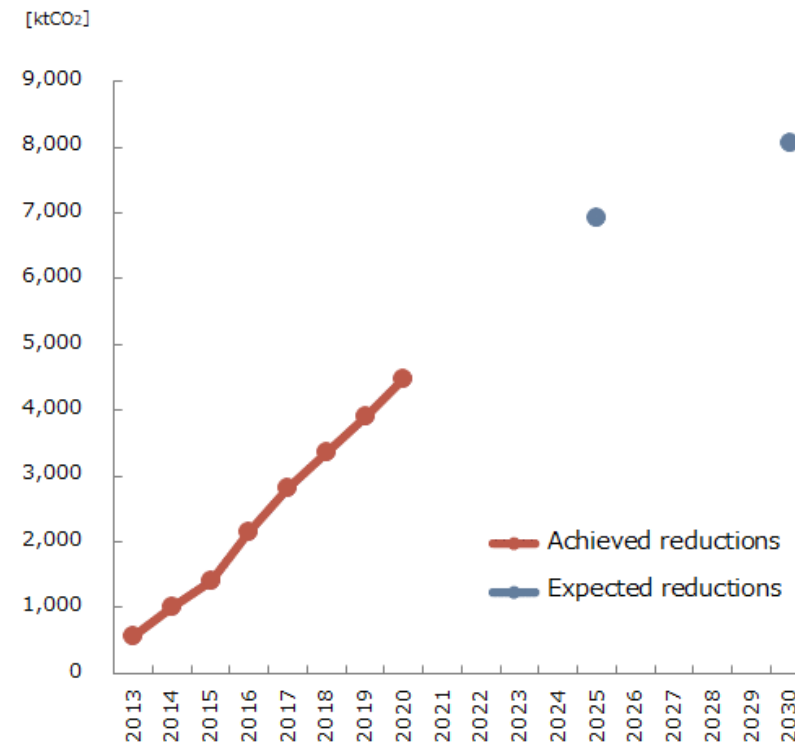
# Example of progress evaluation of PaMs

## Ex. Introduction of low-carbon industrial furnaces

- ✓ Promote the introduction of energy-efficient industrial furnaces in the industry sector through regulations and subsidies

Measure evaluation indicator	Cumulative number of low-carbon industrial furnaces installed
Progress in the emission reductions	<b>C</b> (Expected to be equivalent to the target level in FY 2030)

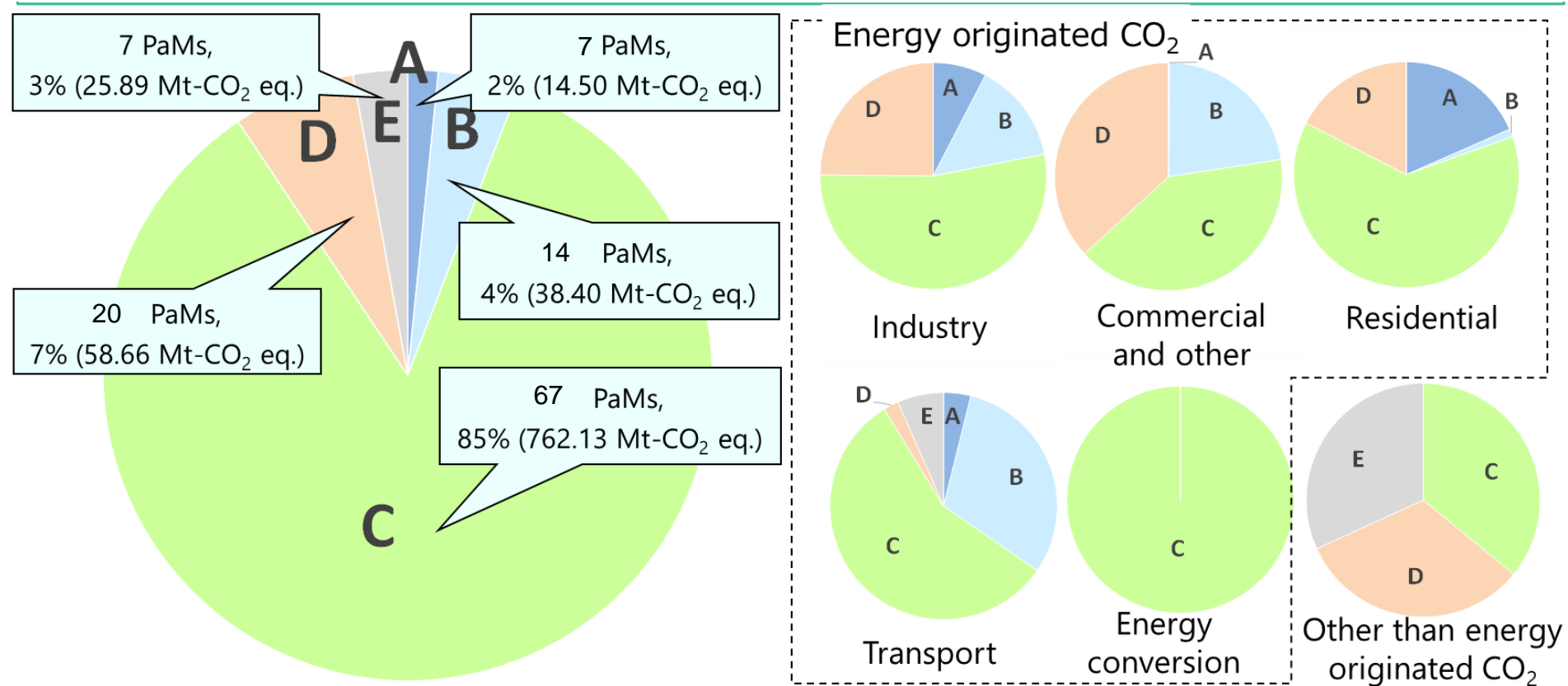
Achieved and expected emission reductions





# Overall Progress Evaluation of the *Plan* in FY 2021

✓ Out of the 115 PaMs listed in the *Plan*, 91% are evaluated as progressing at a pace that meets or exceeds the target levels.



Source: Status of Progress of the Plan for Global Warming Countermeasures in FY2021