



Food and Agriculture
Organization of the
United Nations

FAO and the Enhanced transparency framework

FAO support towards ETF: *NDC Tracking Tool – Installation instructions*

Mirella Salvatore - Viviane Umulisa

Office of Climate Change, Biodiversity and Environment

Food and Agriculture Organization



NDC Tracking Tool

Facilitates the collection of the information required to track progress made in implementing and achieving NDCs and the compilation of the CTF.

The tool allows assessing the progress on NDC implementation by:

- comparing planned versus implemented mitigation and adaptation actions, also in graphical format;
- evaluating GHG reduction achieved against the sectoral and/or economy-wide baseline and NDC target.



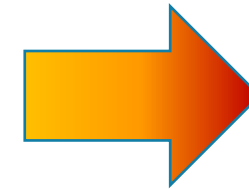
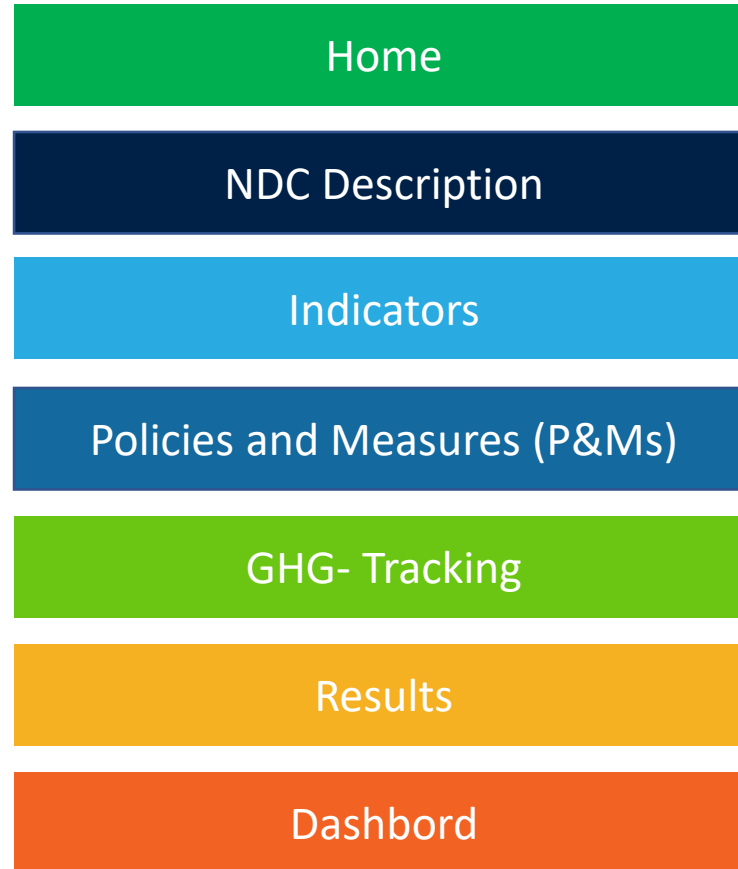
NDC Tracking Tool – main features

- Monitor mitigation policies, adaptation actions and co-benefits.
- Allow different types of indicators (quali/quantitative, GHG and non-GHG)
- Track policies in terms of planned, adopted, and implemented
- Prevent double accounting and overlap of mitigation actions (for example, cross-sectoral actions).
- Allow the inclusion of mitigation contributions proposed under the country's Long-Term Strategy and other actions as NDC enhancement.
- Distinguish the results of mitigation actions linked to NDC implementation from the one for carbon market.



NDC Tracking Tool – structure

- Excel based
- Easy-to-use
- Four templates to collect data according to Chapter III of the MPGs
- Two results sheets: data and graphs



Data organized to facilitate reporting with common tabular formats (CTF)



NDC Tracking Tool – installation guide

The Nationally Determined Contributions Tracking Tool user manual

- <https://www.fao.org/documents/card/en/c/CC4960EN>
- Annex: Installation instructions

Annex: Installation instructions

MINIMUM REQUIREMENTS

The NDC Tracking Tool is an excel-based tool that runs in **Microsoft Excel 2016 and subsequent releases.**

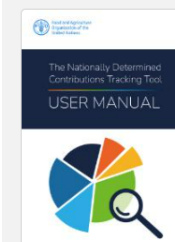
Please make sure **you DO NOT run the tool from a cloud-synced folder**, such as OneDrive or DropBox, as it could encounter some technical problems. Rather, **ensure to copy/move the folder NDC Tracking Tool** (resulting from the unzipping of the file distributed) **under a main hard drive**, such as C:\.

RUNNING THE TOOL

The tool contains macros (for example, code written in Visual Basic for Applications) to automate and perform certain tasks. In some computers, all macros are disabled in Excel by default to protect from malicious code. **The macros contained in this tool do not represent a risk to your computer** (Figure A.1).

Double click on the .xism file in the **NDC Tracking folder** to launch the tool. Should you get a security warning that "active content" (for example, macros) has been disabled, click on the **"Enable Content"** button to enable the macros. In some cases, this is already sufficient to run the tool (the warning box at centre page disappears), **thus the remainder of this document can be disregarded.**

When the warning box remains on screen, **close the Excel file** and **open a new Excel session with a blank sheet.**



The Nationally Determined Contributions Tracking Tool user manual

Download PDF

Year of publication
2023

Place of publication
Rome, Italy

Pages
#40 p.

Author
Umullisa, V.; Schiettecatte, L.-S.; Bloise, M.; Crumpler, K.; Proserpi, P.; Salvatore, M.; Bernoux, M.

Publisher
FAO

Cite this content as:
Umullisa, V., Schiettecatte, L.-S., Bloise, M., Crumpler, K., Proserpi, P.

The Nationally Determined Contributions (NDC) Tracking Tool user manual emphasizes the context behind developing the NDC Tracking Tool, its structure, methodological approach, and step-by-step guidance on how to install and use the tool.

This Food and Agriculture Organization of the United Nations Nationally Determined Contributions Tracking Tool is an Excel-based, easy-to-use tool, which is designed to facilitate countries in collecting the information required to track progress made in implementing and achieving their NDCs. Based on the information available in each country, the tool allows to assess the progress on NDC implementation by (i) comparing planned versus implemented mitigation and adaptation actions, and (ii) estimating the GHG reduction achieved from the implementation of mitigation actions compared against the sectoral and/or national baseline and NDC target scenario.

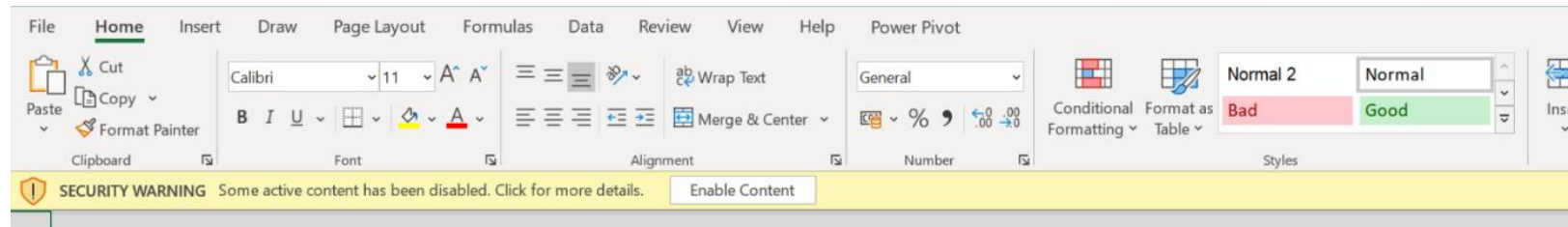
The tool is designed to support governments, national experts, and practitioners involved in the preparation, implementation, updating, revision, and reporting of all sectors covered by the NDC.

Download the **NDC tracking tool** that accompanies this publication



NDC Tracking Tool – installation guide

- Runs in MS Excel 2016 and subsequent releases.
- **DO NOT** run the tool from a cloud-synced folder (e.g. OneDrive, Google drive, Sharepoint, DropBox)
- Ensure to copy/move the NDC Tracking folder from the zip file under the main hard drive (e.g. C:\), if possible. **NOT ON THE DESKTOP.**
- The macros contained in this tool **do not represent a risk** to your computer

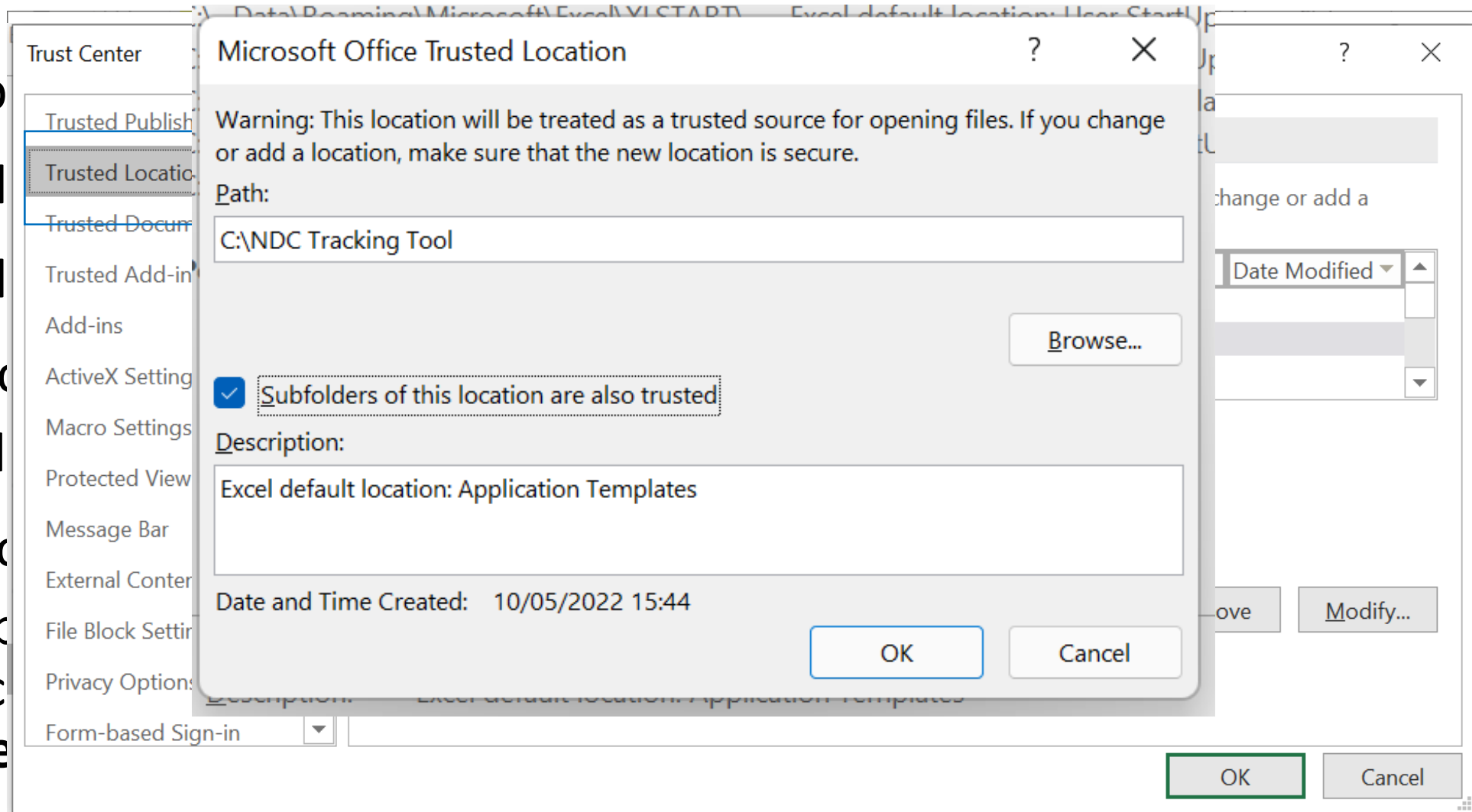


- If not sufficient, the NDC Tracking folder should be set as a trusted location



NDC Tracking Tool – installation guide

- Op
- Sel
- Sel
- Clic
- Sel
- Clic
- Typ
- loc
- are



FAO and the Enhanced transparency framework

www.fao.org/climate-change/transparency/

ETF@fao.org

Thank you !

This work is a joint effort with the
FAO-UNDP Scaling up Climate Ambition on Land Use and Agriculture
through Nationally Determined Contributions and National Adaptation Plans
(SCALA) programme

<https://www.fao.org/in-action/scala/overview/about/en>

