



Food and Agriculture  
Organization of the  
United Nations

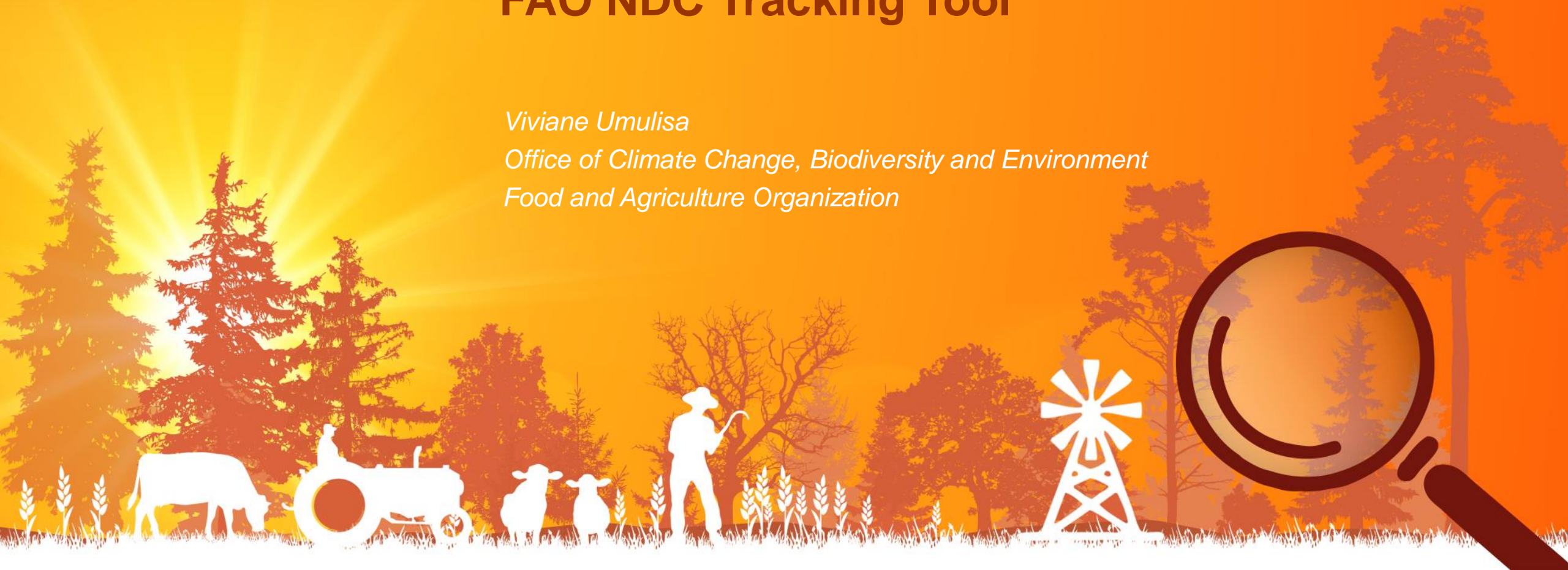
## FAO and the Enhanced transparency framework

# FAO NDC Tracking Tool

*Viviane Umulisa*

*Office of Climate Change, Biodiversity and Environment*

*Food and Agriculture Organization*



# The Modalities Procedures and Guidelines (MPGs)

- First Biennial Transparency Report (BTR) to be submitted no later than 31st December 2024 (with flexibility for least developing Parties and small islands)
- Section II of the BTR report: countries shall provide the **information necessary to track progress made in implementing and achieving nationally determined contributions (MPGs para. 59– 103)**
- Information to be provided in narrative and **common tabular formats (CTF)**
- For the first BTR, which contains the end year of the NDC, countries shall provide an assessment of whether they have achieved the target(s) set in its NDC (e.g: 2025 targets -BTR2026 and 2030 targets- 2032)



# Chapter III of the MPGs: sections covered by the NDC Tracking tool

- A. National circumstances and Institutional arrangements
- B. Description of the Party's NDC
- C. Information necessary to track progress made in Implementing and achieving NDCs
- D. Mitigation Policies and Measures
- E. Summary for GHG emissions and removals
- F. Projections of GHG emissions and removals





# The NDC Tracking Tool:



Facilitates the data collection of the information required to track progress made in implementing and achieving their NDCs and the compilation of the common tabular formats (CTF).

The tool allows assessing the progress on NDC implementation by:

- comparing planned versus implemented mitigation and adaptation actions, also in graphical format;
- evaluating GHG reduction achieved against the sectoral and/or national baseline and NDC target scenario (in connection with the use of the NEXT tool).



# The advantages of the tool are:



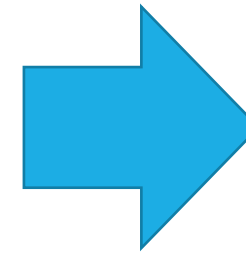
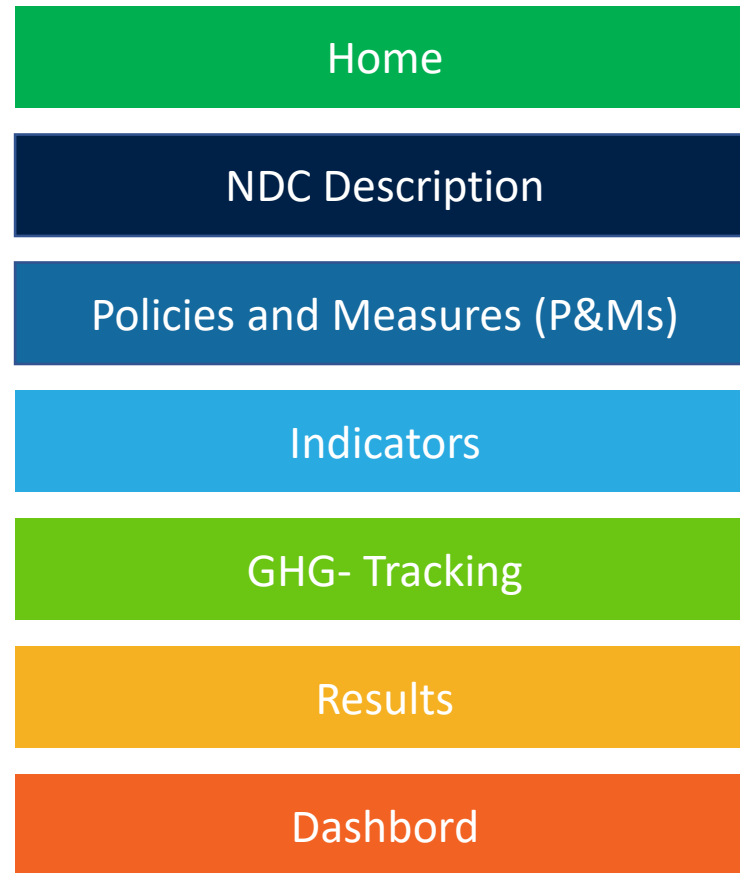
- Monitor the implementation of NDC mitigation actions, adaptation and adaptation with mitigation co-benefits.
- Allow different types of indicators (qualitative, quantitative, GHG and non-GHG)
- Track the contribution of planned, adopted, and implemented mitigation actions.
- Prevent double accounting and overlap of mitigation actions (for example, cross-sectoral actions).
- Allow the inclusion of mitigation contributions proposed under the country's Long-Term Strategy (LTS) and other innovative actions as potential options for NDC enhancement.
- Distinguish the results of mitigation actions linked to the carbon market from national GHG emission reduction NDC targets.



# The NDCs Tracking Tool structure



- Excel based
- Easy-to-use
- Six templates to collect data required by Chapter III of the MPGs



Data organized to facilitate reporting with common tabular formats (CTF)



# Example of indicator types according to MPGs para 66



Type of Indicator	Example of NDC	Country
Net GHG emissions and removals	Emissions reduction of approximately 64.6 million tCO <sub>2</sub> e/year by 2030	Cambodia NDC, 2020
Percentage reduction of GHG intensity	40 % reduction in per capita GHG emissions below BAU by 2030.	Zimbabwe NDC, 2021
Qualitative Indicator of a policy and measure	Participatory environmental management of resources and forms of land use	Argentina NDC, 2020
Other non-GHG targets	Increase of forest cover to 12.9 % of the territory of Armenia by 2030	Armenia NDC, 2020



# NDC Tracking Tool Methodology:

## Performance of the NDC Implementation (applies to all types of indicators)

- **Expected Progress (%)**  $= \frac{\text{current year} - \text{start year}}{\text{End year} - \text{start year}} \times 100$

Cumulative progress to date, expressed as the rate of implementation, calculated based on the period of implementation and current date, assuming linear progression between the start and end year.

- **Actual Implementation Progress (%)**  
= An estimate of cumulative progress to date, expressed as the rate of implementation, to be calculated by the implementation entity based on consideration of actual implementation progress
- **Achieved Progress (%)** = Actual implantation progress (%)  $\times$  Expected progress (%)





# NDC Tracking Tool Methodology:

Inventory-based tracking (GHG-based indicator)

- **Achieved emissions reduction** = Baseline – most recent emissions and removals ( assuring the methodology consistency)

- **Achieved progress (%)** = 
$$\frac{\textit{Achieved emissions reduction}}{\textit{NDC Target}} \times 100$$



# NDC Tracking Tool Methodology:

## Aggregated impact of P&Ms

- Define mitigation actions supporting NDC implementation
- With measures' scenario = Baseline – implemented/adopted P&Ms
- With additional measures' scenario = Baseline – implemented, adopted and planned P&Ms
- Without measures' scenario = BAU excluding all P&Ms after the year set as the starting points for the projection.

Allow to assess the contribution of P&Ms on achieving the NDC goal



# NDC Tracking Tool - result

- Home
- NDC description
- P&Ms
- Indicators
- GHG-tracking
- Results
- Generate PDF

## Performance of the NDC Implementation - MITIGATION 2022

Click on each icon to go back to the referred module

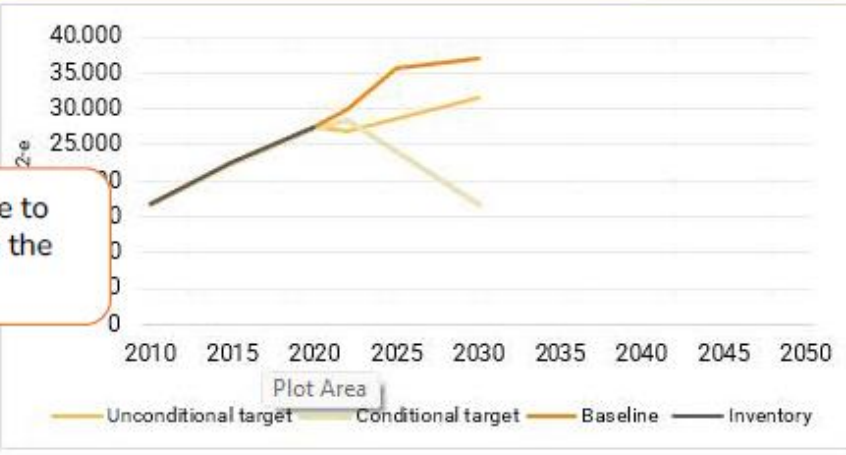


## Performance of the NDC Implementation - ADAPTATION 2022

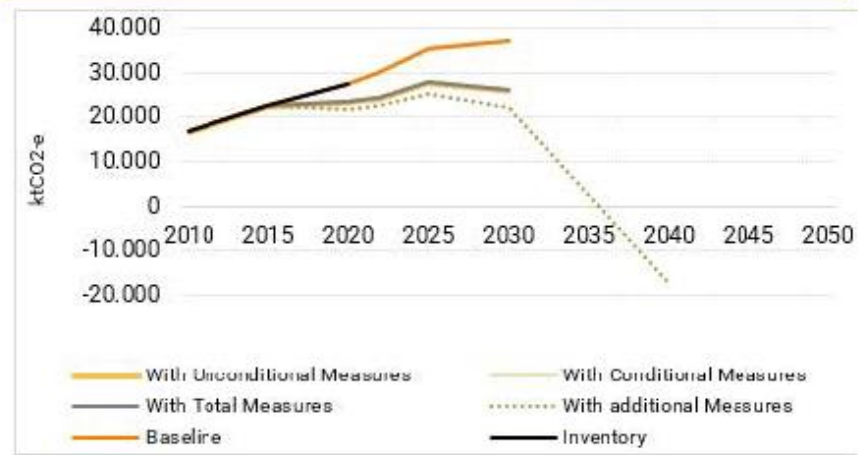
Click on the drop-down menu to see sectorial results



## Inventory based tracking Economy wide



## Impact of policy & measures on national baseline Economy-wide



Click here to generate the results





# NDC Tracking Tool - result

Click on the drop-down menu to see the inventory-based tracking results





# FAO and the Enhanced transparency framework

[www.fao.org/climate-change/our-work/what-we-do/transparency/](http://www.fao.org/climate-change/our-work/what-we-do/transparency/)

[ETF@fao.org](mailto:ETF@fao.org)

*Thank you !*

This work is a joint effort with the  
FAO-UNDP Scaling up Climate Ambition on Land Use and Agriculture  
through Nationally Determined Contributions and National Adaptation Plans  
(SCALA) programme

<https://www.fao.org/in-action/scala/overview/about/en>

