



Food and Agriculture
Organization of the
United Nations

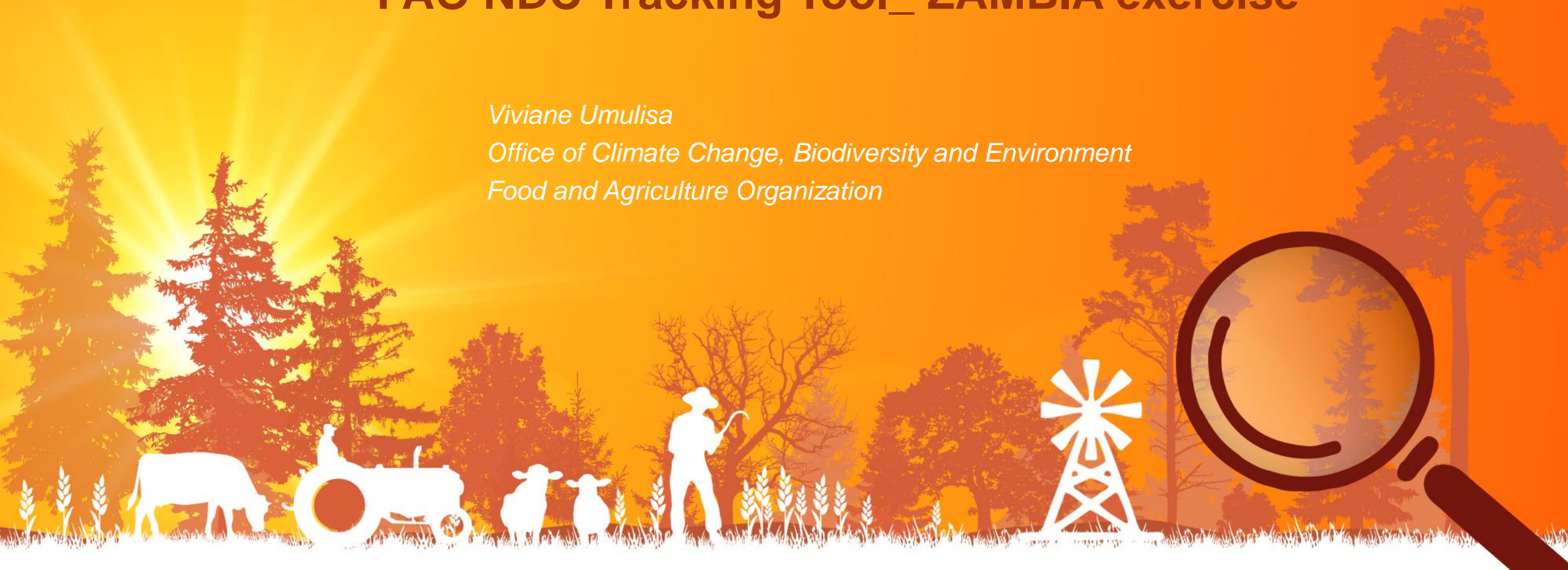
FAO and the Enhanced transparency framework

FAO NDC Tracking Tool_ ZAMBIA exercise

Viviane Umulisa

Office of Climate Change, Biodiversity and Environment

Food and Agriculture Organization



NDC Tracking Tool applied to Zambia

Zambia NDC_updated on July 2021

NDC Target:

Zambia intends to reduce its greenhouse gas emissions by 25% at the Business As Usual (BAU) level of international support prevailing in 2015 and towards 47% (with substantial international support) compared to 2010 levels.



Understand the Zambia NDC

- Target type: GHG target
- Target reference: Base year
- Target metric: Absolute
- Target temporal scale: Annual
- Target unit: Gg CO₂eq
- Reference year: 2010
- Reference value: 120,604 Gg CO₂ eq
- Conditional contribution: 25%
- Conditional+ contribution: 22%
- Total contribution: 47%
- Target reference conditional: 20000 Gg CO₂ eq
- Target reference conditional+: 18000 Gg CO₂ eq
- Target reference total: 38000 Gg CO₂ eq
- Period of implementation: From 1st January 2015 – 31st December 2030



The information necessary to track the NDC: Methodology and scope

- Methodology used: IPCC 2006
- IPCC Sectors covered by the NDC:
 - ✓ **Energy:** Energy industries, manufacturing industries, construction, transport, and other sectors
 - ✓ **Agriculture Forestry and Other Land Use (AFOLU):** livestock, Land and Aggregate sources and non-CO2 emissions sources on land
 - ✓ **Waste:** solid waste disposal, biological treatment of solid waste, Incineration and Open Burning of Waste, Wastewater Treatment and Discharge.
- Gases covered: Carbon dioxide (CO₂), methane (CH₄), nitrous oxide (N₂O)



Mitigation actions focused on following programmes

- Sustainable forest management;
- Sustainable agriculture:
- Renewable energy and energy efficiency
- Waste management (additional)



Example of indicators to track the NDC

- Sustainable forest management;
 - NAMAs on sustainable charcoal production: 10,000 ha will be afforested in each of the four areas - Rufunsa, Kapiri Mposhi and Masaiti – to create alternate shelterbelt strips that would help promote sustainable forest wood harvesting for charcoal production from 2015 to 2030. By 2023, 15000 ha has been implemented
- Sustainable agriculture:
 - The EP-JSLP project will implement cropland management and use of agriculture inputs on 190304 ha from 2020 to 2030

Source: Project documents 2023



Example of indicators to track the NDC

- Renewable energy and energy efficiency
 - Sustainable access to electricity in the southern province (2017 to 2030). Increased renewable energy contribution to the national installed electricity generation capacity through 100 MW of solar electricity supplied in the grid by 2025 compared to 40 MW existing in Ngonye and Bangweuhu in 2017. By 2023, 21 MW have already been produced

Source: NDC implementation plan
(unpublished draft 2023)



Example of indicators to track the NDC

- Waste

- Biogas and waste management project in Libuyu Township (2020 to 2030). The township has 10,000 residents, and the project targets 2,730 people in the first phase (2020 to 2023) to replace the dilapidated pit latrines and septic tanks by 390 new pour-flush sanitation facilities to construct biogas digesters.



The information necessary to track the NDC:

Zambia Annual emissions per sector GgCO₂ eq (1st BUR 2020)

	Total Without AFOLU	Energy	IPPU	AFOLU Emissions	Waste	Total With AFOLU
1994	2 812.4	2 179.4	428.5	83250.8	204.5	86 063.2
2000	3 052.9	1 743.5	1 086.9	99183.8	222.5	102 236.8
2005	3 735.0	2 158.9	1 318.8	102203.5	257.3	105 938.4
2010	5 021.1	3 155.8	1 559.4	115583.6	305.9	120 604.7
2011	5 254.5	3 400.6	1 544.1	112 399.6	309.9	117 654.1
2012	8 753.4	6 796.9	1 641.8	113 022.2	314.6	121 775.6
2013	9 807.9	7 737.9	1 755.4	114 054.4	314.6	123 862.2
2014	9 667.3	7 737.9	1 609.8	115 374.9	319.6	125 042.2
2015	9 285.0	7 049.8	1 905.0	117 141.0	330.2	126 425.9
2016	8 871.0	6 443.7	2 091.4	117 887.5	335.8	126 758.5



The information necessary to track the NDC:

Projected baseline in Gg CO₂ eq (1st BUR 2020)

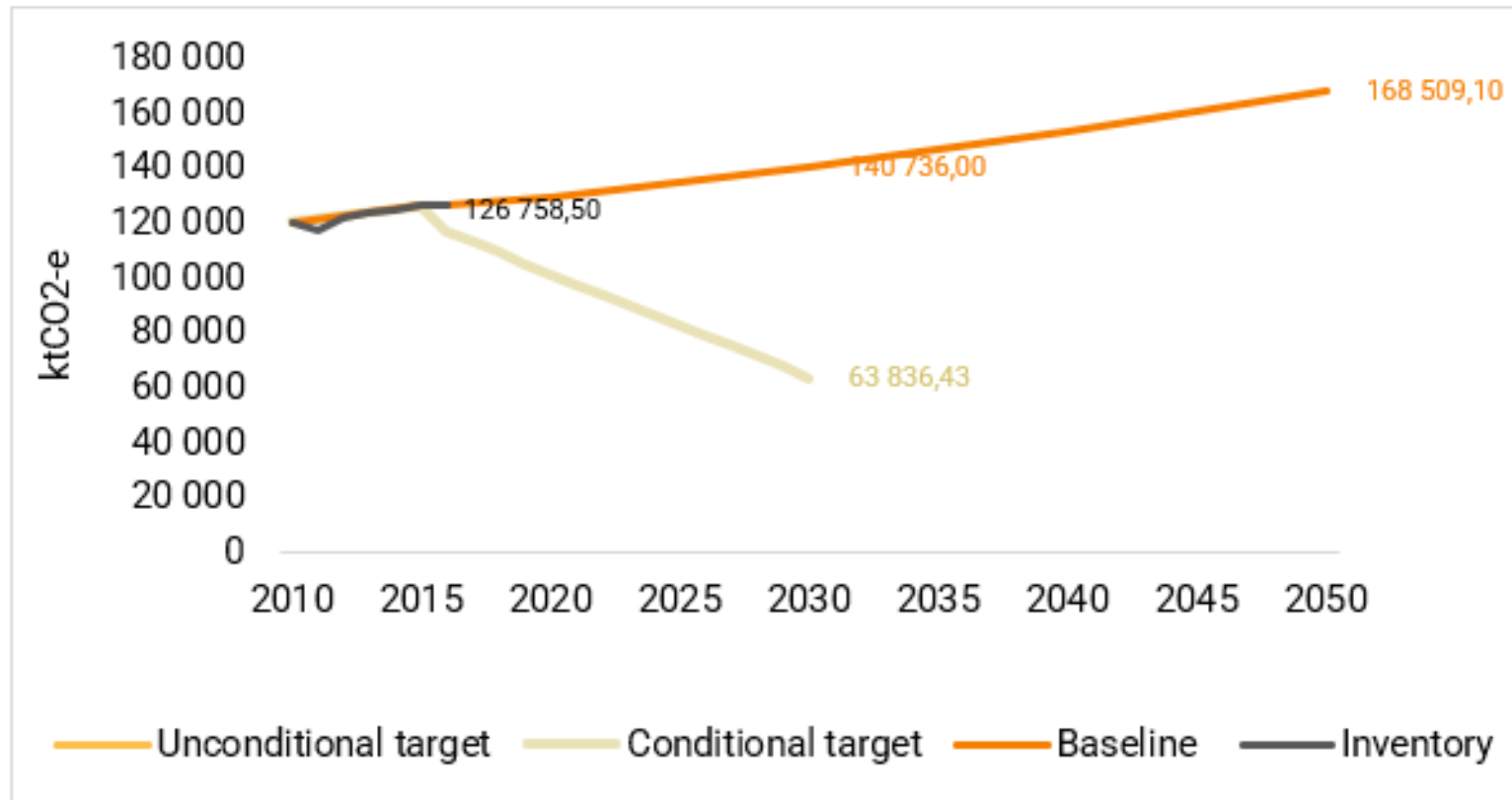
Year	Energy	IPPU	AFOLU	Waste	Total Baseline
2010	3155,8	1559,4	115425	305,9	120446,1
2015	7049,8	1904,8	117141	330,2	126425,7
2020	5281,4	2387,7	121223,2	403,4	129295,8
2025	6038,7	2812,7	125525,8	466,4	134843,6
2030	6904,7	3313,2	129981,2	536,9	140736
2035	7895	3902,9	134594,7	614,2	147006,8
2040	9027,4	4597,4	139371,9	698,2	153694,9
2045	10322,4	5415,6	144318,7	788,6	160845,3
2050	11803,2	6379,4	149441,1	885,5	168509,1



Result: Inventory-based tracking

Inventory based tracking

Economy-wide



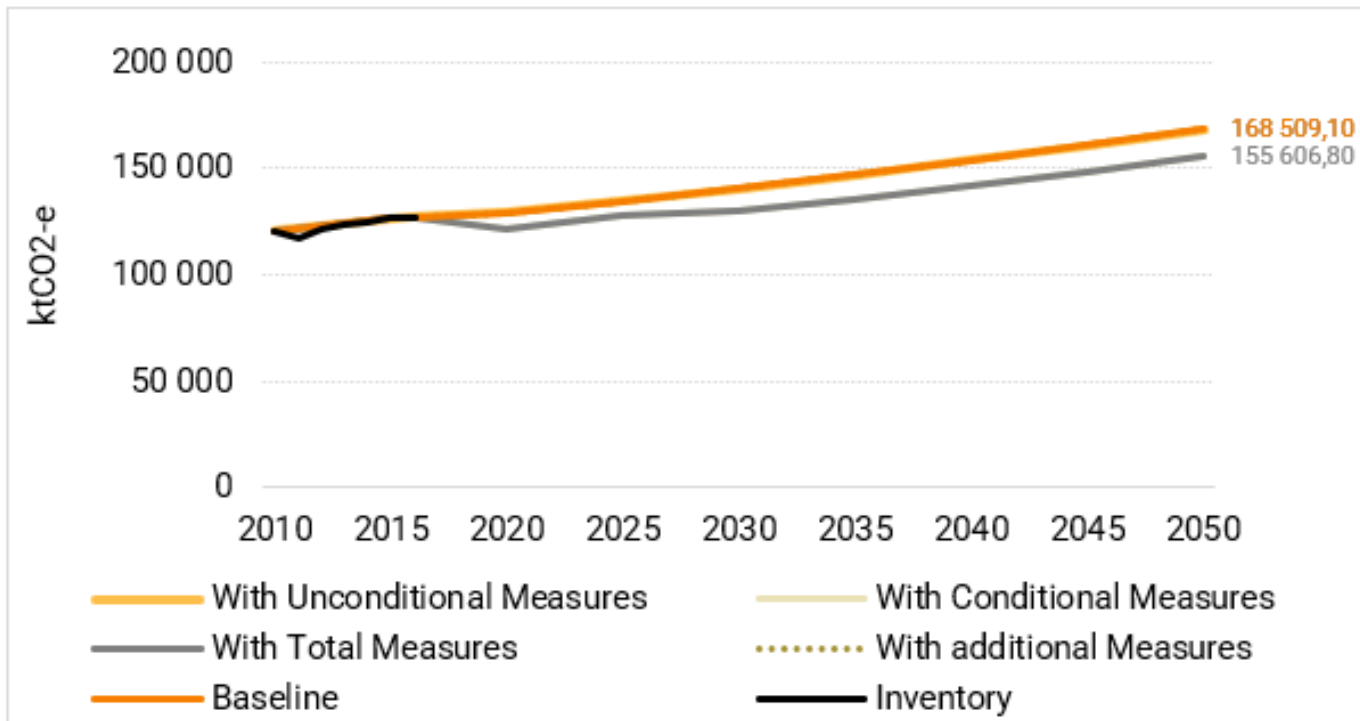
Calculated based on the last inventory year, 2016 (BUR 2000). The last inventory year = the first year of implementation, thus no progress is shown



Result: Measure-based tracking

Impact of policy & measures on national baseline

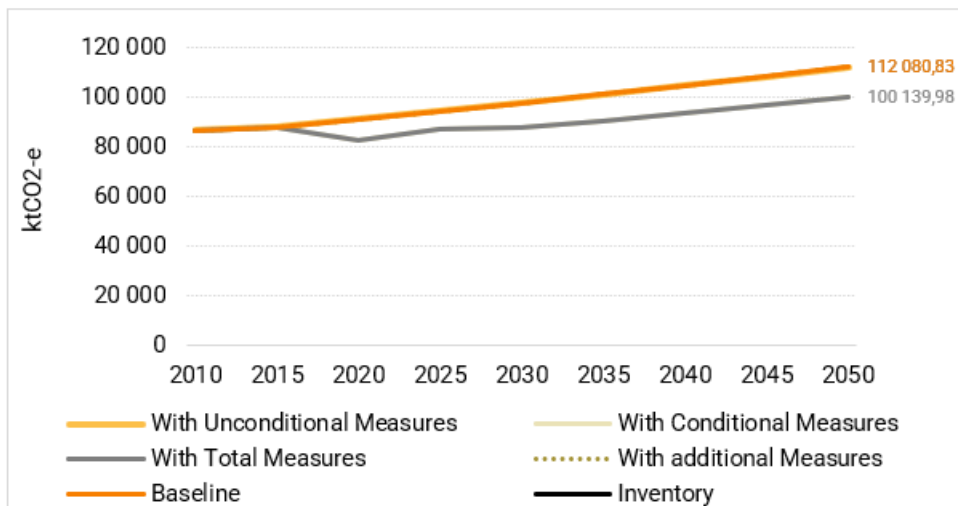
Economy-wide



The contribution of currently implemented P&Ms compared with the national and sectorial baseline

Impact of policy & measures on national baseline

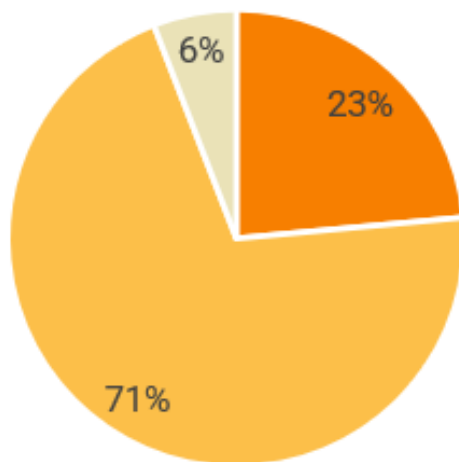
LULUCF



Result: Measure-based tracking

Overall status of the NDC implementation

2023

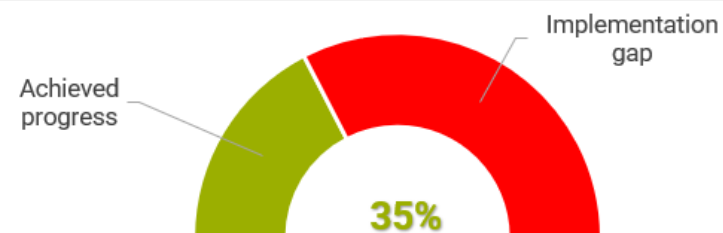


■ Planned ■ Adopted ■ Implemented ■ Long-term plan

The value expresses the progress made in 2023, based on the actions listed in the tool (planned vs implemented)

Progress on NDC achievement

Measures-based tracking



Relative emission reduction achieved from NDC implementation compare to the target



FAO and the Enhanced transparency framework

www.fao.org/climate-change/our-work/what-we-do/transparency/

ETF@fao.org

Thank you !

This work is a joint effort with the
FAO-UNDP Scaling up Climate Ambition on Land Use and Agriculture
through Nationally Determined Contributions and National Adaptation Plans
(SCALA) programme

<https://www.fao.org/in-action/scala/overview/about/en>

